

MSI-4260 Port-A-Weigh Crane Scale

Retrofit Kit Installation Instructions

The MSI-4260 Retrofit Kit updates older generations of the MSI-4260 Port-A-Weigh Crane Scales to the most current configuration of the MSI-4260 or MSI-4260M. Generation information is located on the serial tag.

Retrofit requirements vary depending on generation. If current scale is an A generation, follow [Steps 1.0, 2.0, 3.0 and 4.0](#). If the current scale is a B generation or newer, follow [Steps 1.0 and 4.0](#) only.



Manuals are available from Rice Lake Weighing Systems at www.ricelake.com/manuals

Warranty information is available at www.ricelake.com/warranties

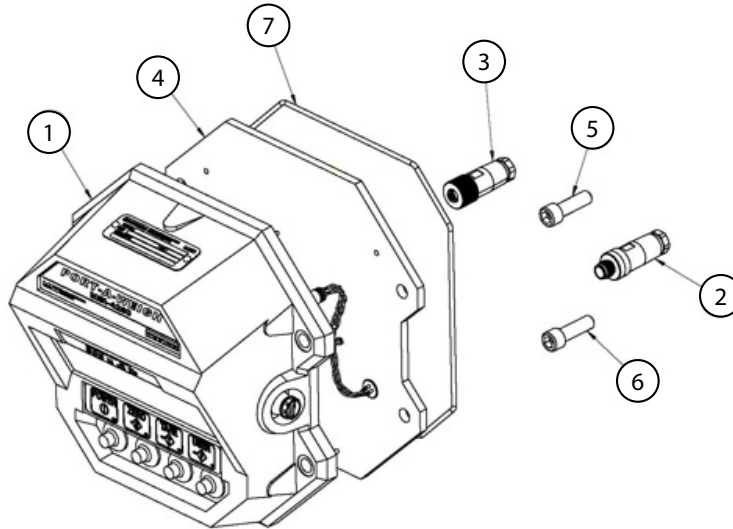


Figure 1. MSI-4260 Retrofit Kit Parts Diagram

Item No.	Part No.	Description	Qty
1	197691	Front Casting Assembly LED	1
	203043	Front Casting Assembly LCD	1
2	162185	Conn, M12 4 Pin Male Field Wireable 6-8mm OD Straight	1
3	198913	Conn, IP67, Euro Field Wireable, 4 Cond, Femail Straight PG-9	1
4	139473	Bulkhead Assembly 4260B	1
	196276	Bulkhead Assembly Front 4260M	1
5	145998	Screw SH 3/8-16 x 1-1/4 SS	3
6	133597	Screw Seal 3/8-16 x 1-1/4 SS Drilled Head	1
7	149724	O-ring Assembly Front Casting Paw/Trans-Weigh	2
	149679	Tag Serial Number	1
	145962	Screw RH 4 x 1/4 U Type Drive, Plated	2
	146604	Screw PH 6-32 x 7/16 Phil SS	2
	204480	Filler Plate Dual Antenna	2
	214016	Poron Pad 1.7 x 0.7 x 0.125	2
	195104	Overlay, Descriptive 4260M	1

Table 1. MSI-4260 Retrofit Kit Parts List

1.0 Removing the Existing Front Casting



WARNING: Ensure that all power has been removed prior to starting the procedure.

1. Turn the MSI-4260 off.
2. Remove the front casting by loosening the screws securing it. See Figure 2.
3. Unplug the load cell and power cables from the front casting or bulkhead. Discard casting and hardware.
4. With one hand, support the battery access cover.
5. Release the two latches holding the battery access cover.
6. Carefully lower the cover while holding the battery in place, it could be loose and fall causing damage.
7. Remove the battery by pulling straight back.
8. Close the cover and secure with latches.
9. Remove the battery casting by loosening the screws securing it. Retain for re-installation.

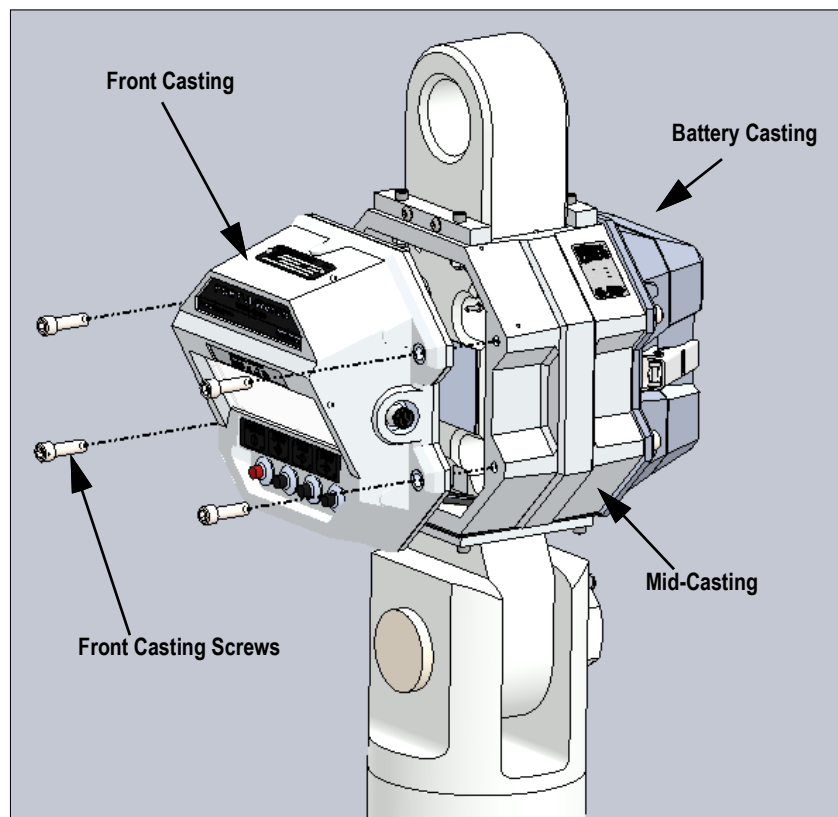


Figure 2. Front Casting Removal

2.0 Rewiring Load Cell Cable

! **IMPORTANT:** *The wiring procedure is only applicable when transitioning from an A model.*

1. Locate the cable coming out of the load cell.
2. Cut the connector off as close to the connector as possible.
3. Strip the cable jacket as needed to allow 1/2 – 3/4 inch of exposed conductors, Red, Green, White and Black.
4. Cut the shield/drain wire flush with the end of jacket.
5. Strip the Red, Green, White and Black wires approximately 1/4 inch and tin with solder.
6. Connect the wires to the connector together as shown in [Table 2.](#) and [Figure 3.](#)

L/C Cable Conductor Color	Function	Connector Pin Number
Red	+Excitation	1
Black	-Excitation	2
Green	+Signal	3
White	-Signal	4

Table 2. Load Cell Cable Connections

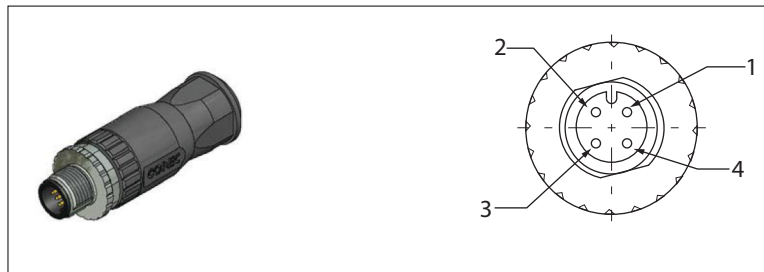


Figure 3. L/C Cable Connector

3.0 Rewiring the Battery Cable

! **IMPORTANT:** *The wiring procedure is only applicable when transitioning from an A model.*

1. Locate the power cable coming from the inside of the battery casting.
2. Cut the connector off the battery cable as close to the connector as possible.
3. Strip the cable jacket as needed to allow 1/2 – 3/4 inch of exposed conductors, Red and Black.
4. Cut the shield/drain wire flush with the end of jacket.
5. Strip the Red and Black wires approximately 1/4 inch and tin with solder.

6. Connect wire to the connector as shown in [Table 3](#), and [Figure 4](#).

Battery Cable Conductor Color	Function	198913 Connector Pin Number
Red	+ Battery	1
Black	- Battery	2
-	Not Used	3
-	Not Used	4

Table 3. Power Cable Connections

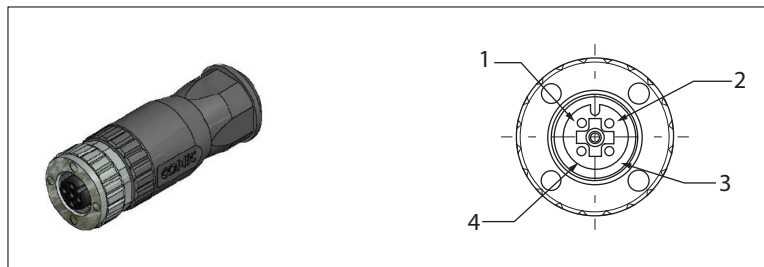


Figure 4. Battery Cable Connector

4.0 Reassembling the Unit

1. Place the o-ring in the groove on the bulkhead of the supplied front casting. Ensure bulkhead is correctly aligned on the front casting.
2. Plug the updated cables into the cable connectors on the bulkhead. Load cell cable connects to the male connector and power cable connects to the female connector.
3. Place the front casting assembly on mid-casting assembly and secure with the supplied 3/8 inch drive head screws, torqued to 20–25 ft-lbs (see [Figure 2 on page 2](#)).



IMPORTANT: To comply with NTEP, remove the old serial tag on the mid casting. The new serial tag is located on the front casting.

4. Reinstall the battery casting securing with the retained hardware.
5. Reinstall the battery.
6. Calibrate the unit, see the operators manual (PN 152159) for the calibration procedure.



© Rice Lake Weighing Systems Content subject to change without notice.

230 W. Coleman St. • Rice Lake, WI 54868 • USA USA: 800-472-6703 • International: +1-715-234-9171