

SLP-V Lite Installation Guide

Please read the following information carefully before starting installation and select the correct options for your site.

System Requirements

Parameter	Requirement
Operating System	SLP-V Lite requires a PC running Windows 2000 Professional, XP Professional, or Vista (XP Home edition is not supported). Running on Windows 98 or NT 4.0 is possible but is not recommended. The operating system must be capable of installing the Microsoft Windows .NET Framework.
CPU and memory	A Pentium II or later CPU with 256MB or more memory is recommended. More memory is strongly recommended if using a large database.
Screen resolution	The minimum screen resolution is 800 x 600 pixels. However, a resolution 1024 x 768 pixels or better is strongly recommended for ease of use.
Database	Microsoft Jet database engine (installed as part of Microsoft Data Access Components - see Required Software below)

In general, the system requirements depend on factors such as the size of the database (number of PLUs, etc.) and number of simultaneous users. If installing at a large site, selection of a server machine with larger memory size and more powerful CPU than listed above is strongly recommended to achieve satisfactory performance.

Required Software

SLP-V Lite requires the following software to be installed. The SLP-V Lite installer program will step you through installing .NET Framework version 1.1 and Data Access Components.

- **Microsoft Windows .NET Framework 1.1.**
Microsoft Windows .NET Framework version 1.1 must be installed on your computer before you can install SLP-V Lite. If not already installed, you can obtain the installer from your Ishida agent or download it from the Microsoft web site.
Important: SLP-V Lite requires .NET 1.1. Other versions such as .NET 2.0 or 3.0 do not support SLP-V Lite.
- **Microsoft Data Access Components**
If Microsoft Data Access Components is not already installed on your PC, a message will appear asking you to run the MDAC_TYP.EXE installer program. You can obtain the installer from your Ishida agent or download it from the Microsoft web site.
- **Microsoft Internet Explorer 5.5 or later.**
The Internet Explorer installation includes some required Windows system files that may not be present on older versions of Windows. If not already installed, install Internet Explorer which you can obtain from the Microsoft web site. You do not need to set Internet Explorer as your default browser.

NOTE: The latest versions of the .Net Framework, Microsoft Data Access Components and Microsoft Internet Explorer can be downloaded from the Microsoft web site <http://www.microsoft.com>.

SLP-V Lite Installation Guide

Before Starting the Installation

There are a number of things you will need during the installation. Please check the following list before starting to install SLP-V Lite.

License file

A license file is required to use SLP-V Lite. This is typically provided by your Ishida agent. You can use SLP-V Lite without a license file, but in this case you will be restricted to the demonstration version.

Important: Before inserting the SLP-V Lite installation CD, copy the SLP-V Lite license file onto your computer. Access to the license file is required during installation.

Scale network

Part of the SLP-V Lite installation process involves defining all the scales in your network. In particular, you will need the IP address of each scale. Contact your Ishida agent if you do not know how to obtain this information.

Installation Procedure

If you have an existing copy of SLP-V Lite installed, please uninstall this first.

If your installation CD-ROM has been pre-configured, the appropriate installation will start automatically when you insert the CD-ROM in to the PC.

If not, use Windows Explorer to open the installation CD-ROM and double click the installer file: InstallSlpV.exe.

Once started, simply follow the instructions that appear on the screen. See **Step by Step Installation Procedure** below.

It is recommended that you reboot the PC after completing the installation.

Notes/Troubleshooting:

Take note of the following points when installing the software.

1. If any error messages appear when you run the installation, refer to the **Required Software** section above and install any required software that is not already installed, then run the SLP-V Lite installation again.
2. If installing on **Windows Vista**, you may need to change the default firewall setting. The procedure is as follows:

From the command prompt, run **wf.msc** and set the Firewall settings as follows:

```
<Security settings> - <Windows Firewall with advanced security>
```

```
<Windows Firewall with advanced security on local computer>
```

```
<Windows Firewall Properties> - "Inbound connections" =
```

Allow

(the default setting is "Block")

3. If installing on **Windows Vista**, the installation will fail if you attempt to install by running the MSI installer file directly. Please use the installer file (InstallSlpV.exe) provided by Ishida to run the installation.

If you do need to run MSI installer file directly, you must either disable the Vista User Access Control function or run the installer as administrator. If you do not do this, the installation will fail because User Access Control will not permit the installer to update

SLP-V Lite Installation Guide

system settings.

To disable User Access Control, go to **Control Panel**, select **User Accounts**, and use the **Turn User Account Control on or off** procedure.

To run as administrator, create the following MS-DOS BAT file in the folder containing the installer, then open the folder in Explorer, right-click on the BAT file, and select **Run as Administrator**.

```
cd <installation folder>
msiexec -i "<installation file name>"
```

4. If you intend to install SLP-V Lite on a **mapped network drive** (even if mapped to a drive on the same PC), you need to modify the Microsoft .Net security settings to indicate that the drive is trusted (by default, the Microsoft .Net security sub-system prohibits programs from running on mapped drives). There are two ways to do this:

1. In Windows Explorer, open the .Net framework folder (typically C:\WINDOWS\Microsoft.NET\Framework\v1.1.4322) and run **ConfigWizards.exe**. Click **Adjust .Net Security** and follow the instructions on the screen to set the security level for the **Local Intranet** to **Full Trust**.
2. Alternatively, execute the following command from the command line in the .Net framework folder:

```
caspol -q -machine -addgroup 1 -url file:///z:/*
FullTrust -name "Z Drive"
```

(This example assigns full trust to the Z drive. Replace Z with the drive letter (or folder path), you intend to use. Refer to the Microsoft *caspol* documentation for details.)

Method 1 is simpler, but Method 2 allows finer control of which drive or folder to assign full trust.

Note that, if installing to a mapped drive, **you must do this before installing SLP-V Lite** otherwise the installation program will not be permitted to execute.

Uninstalling SLP-V Lite

Open the **Windows Control Panel**, select **Add or Remove Programs**, and then select **SLP-V Lite** from the list of applications. Follow the instructions that appear on the screen.

Please reboot your PC after uninstallation completes.

Running SLP-V Lite for the First Time

You will be prompted to specify the required settings when you run SLP-V Lite for the first time. [See below for step by step instructions.](#)

Re-Installing an Old Version of SLP-V Lite

If you uninstall SLP-V Lite and then re-install an older version, you may not be able to use your existing database and setup file. If the setup file is not compatible, SLP-V Lite will not start and a setup load error will be recorded in the server log. If the database is not compatible, an error

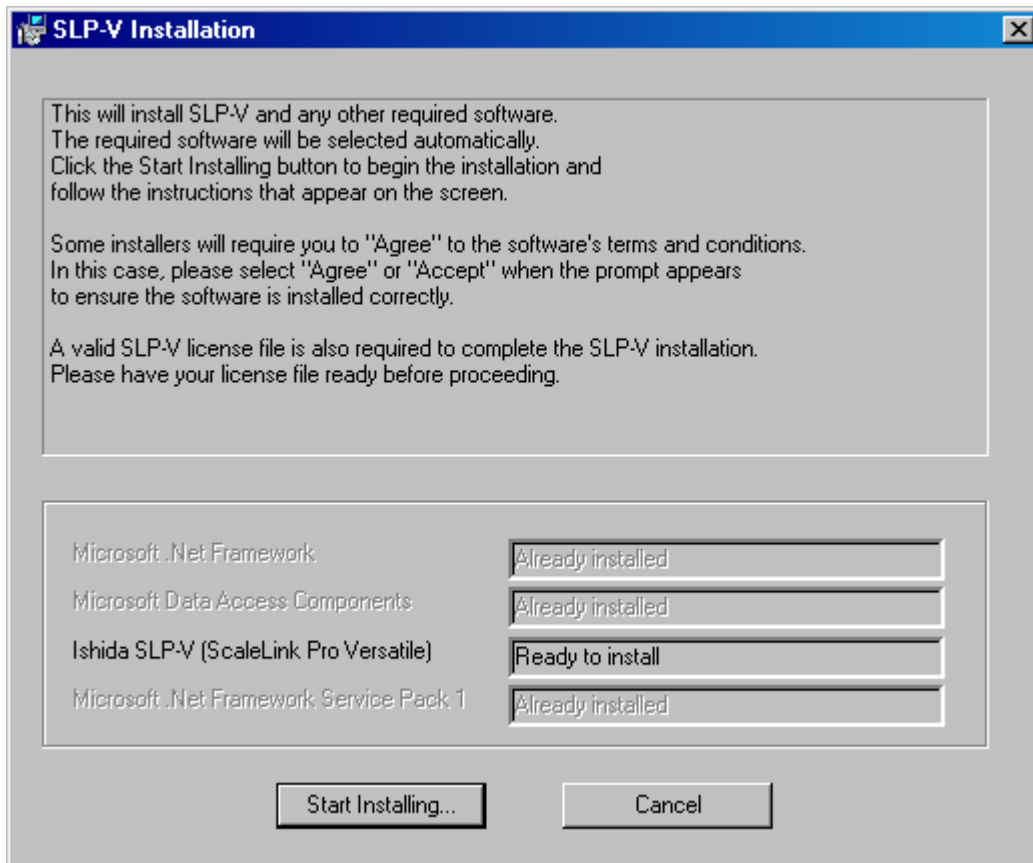
SLP-V Lite Installation Guide

will appear when you start SLP-V Lite and try to login. A database load error will also be recorded in the server log.

In general, you should never reinstall an older version of SLP-V Lite except under the guidance of your Ishida dealer.

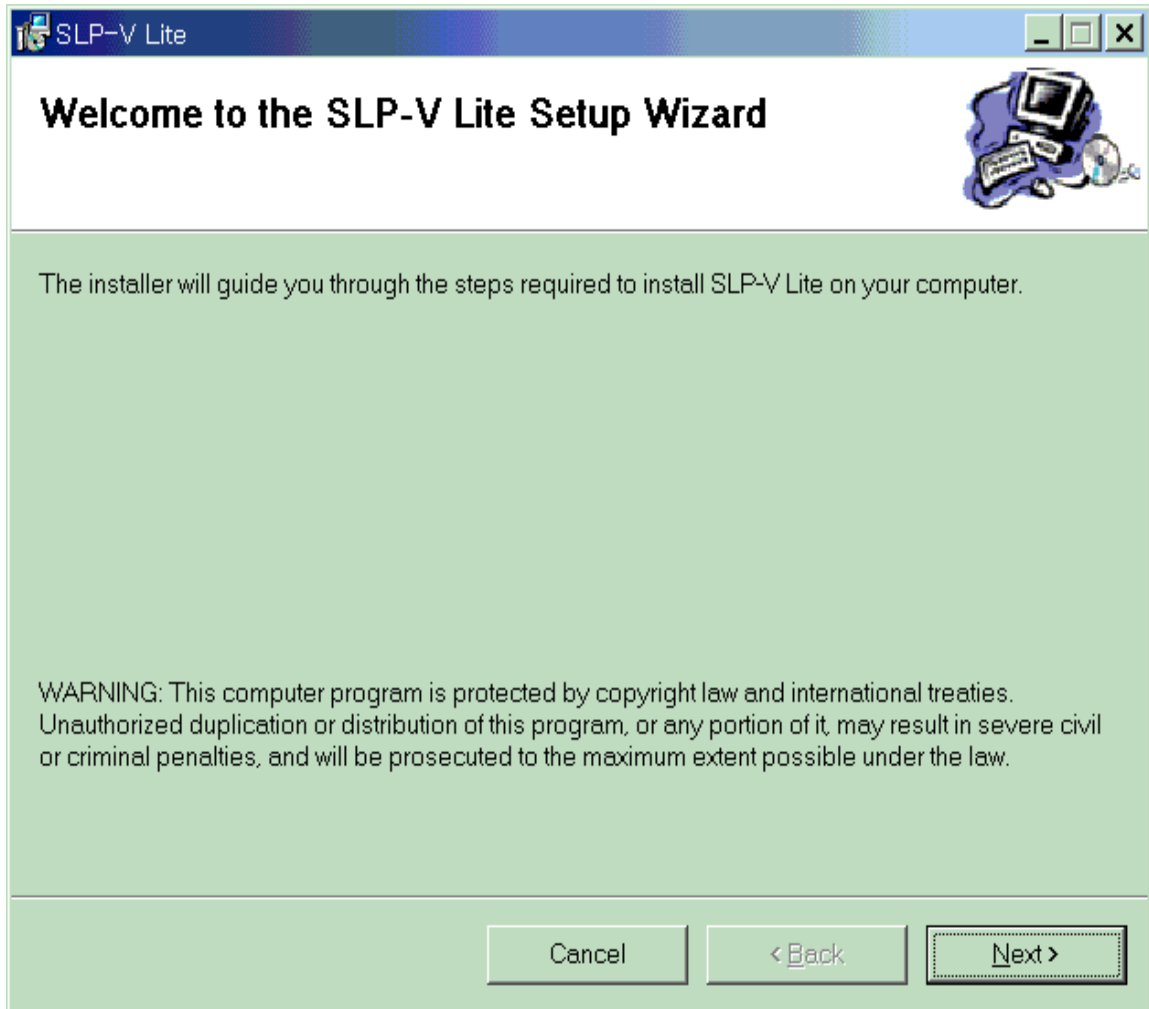
Step by Step Installation Procedure

1. If the installation does not start automatically, use Windows Explorer to open the installation CD-ROM and double click on the installer file: InstallSlpV.exe. The following window appears after you start the installation.



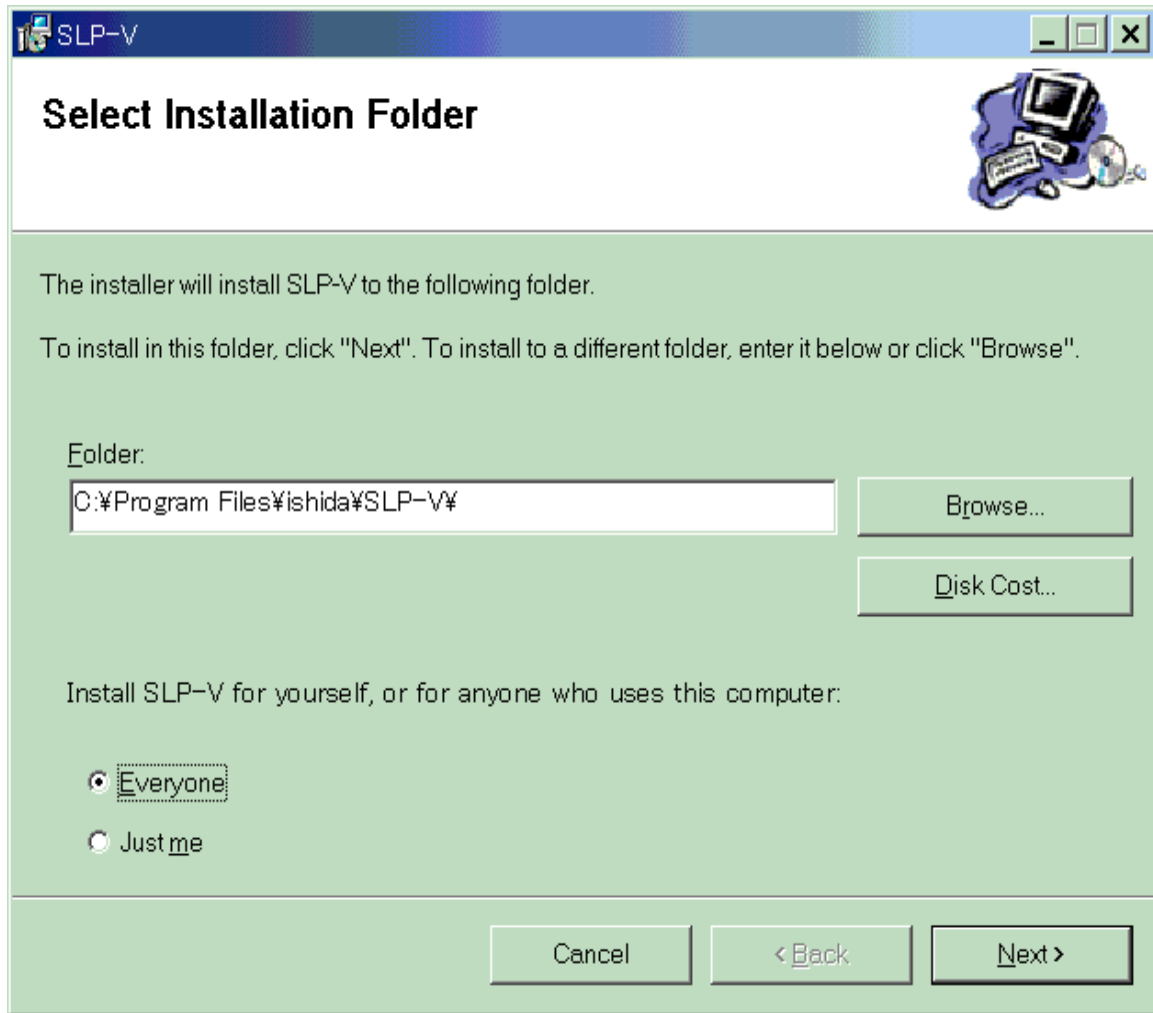
SLP-V Lite Installation Guide

2. Proceed with installation of the non-Ishida software as needed: .NET Framework and Data Access Components. Follow instructions for the standard installations. For the SLP-V Lite software installation refer to the steps below beginning with the following window.



SLP-V Lite Installation Guide

- The following page appears.



In most cases, you should accept the default folder. However, you may modify this if necessary.

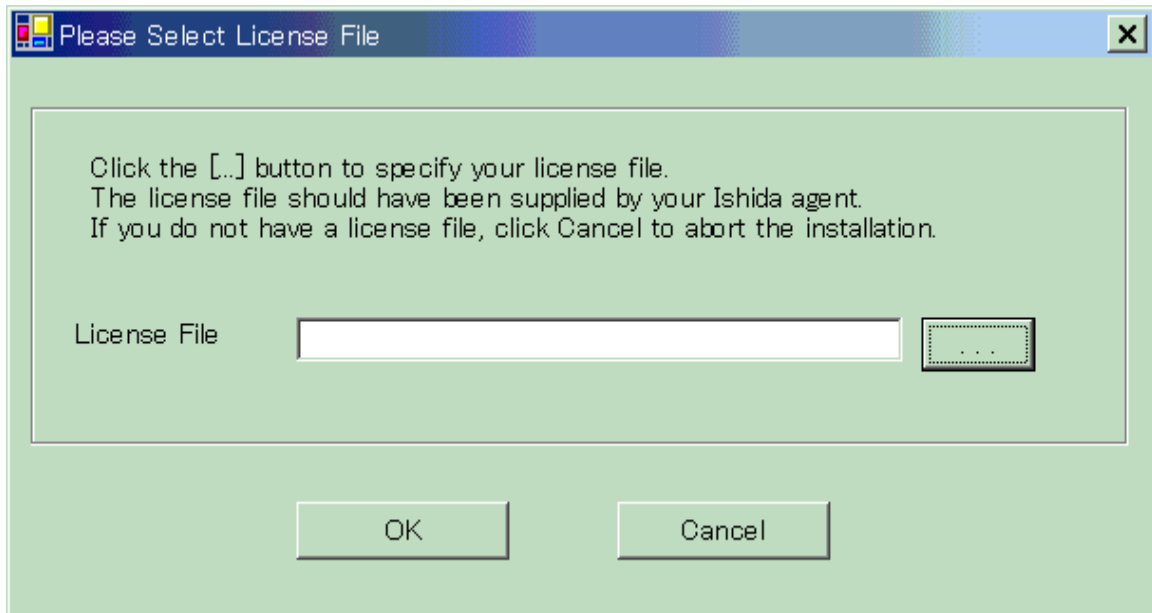
On some versions of Windows, you will also have the option to install SLP-V Lite for yourself only or for all users of the computer.

When you are ready, click **Next** to proceed to the next page.

- Another page appears confirming that the installation is ready to start. Click **Next** to start copying files.
A progress window appears while the installer copies the SLP-V Lite files to your hard disk.

SLP-V Lite Installation Guide

5. The following window appears when copying files has finished.



Click the [...] button to display a File Open dialog box and select the license file supplied by your Ishida agent.

When you are ready, click **OK**.

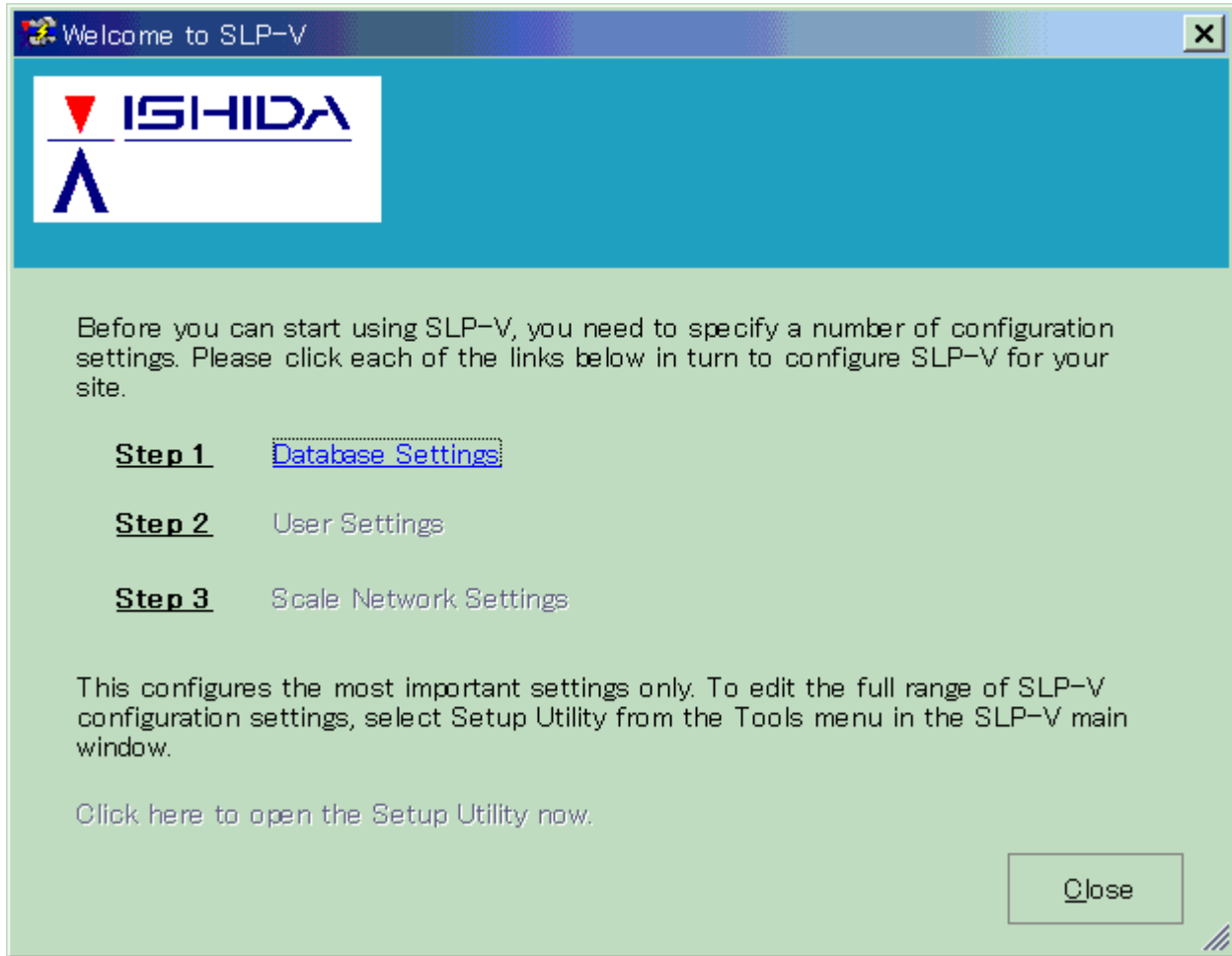
6. A final window appears to notify you that the installation completed successfully.

Once, you have successfully installed SLP-V Lite, follow the instructions in the **Running SLP-V Lite for the First Time** section below.

SLP-V Lite Installation Guide

Running SLP-V Lite for the First Time

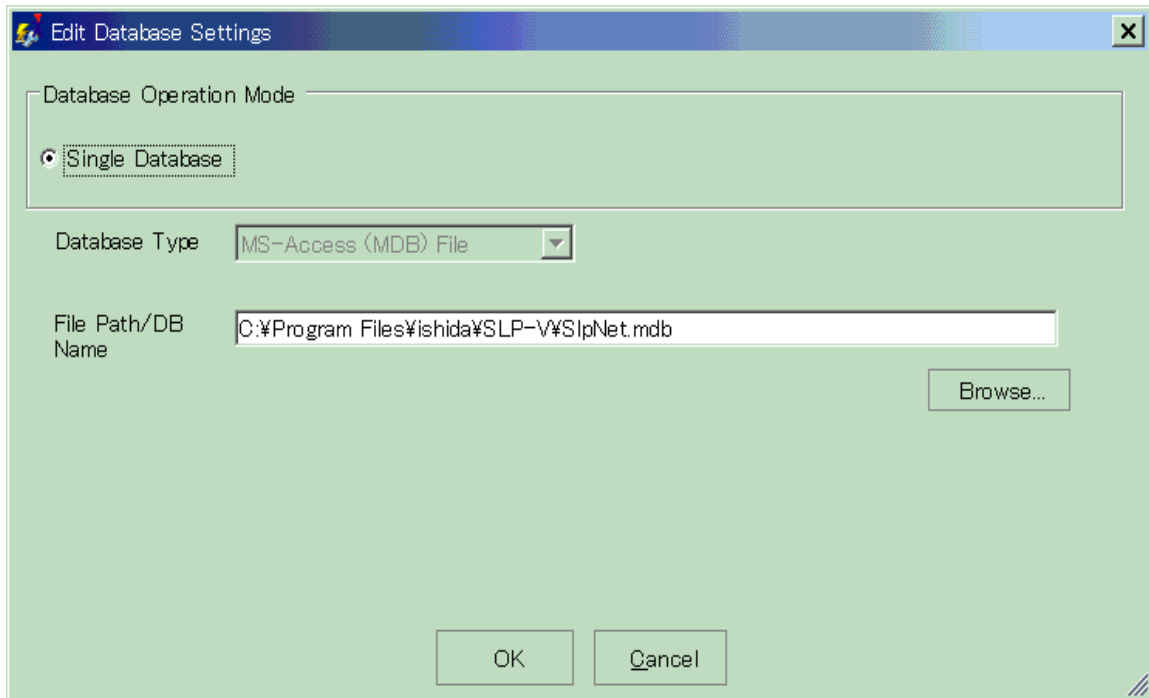
The following window appears when you run the standalone version of SLP-V Lite for the first time.



As instructed, click each link in turn to configure your copy of SLP-V Lite. Note that the **Scale Network Settings** link is not enabled until after you specify the database settings. The detailed procedure is as follows.

SLP-V Lite Installation Guide

1. Click the **Database Settings** link to open the following window.

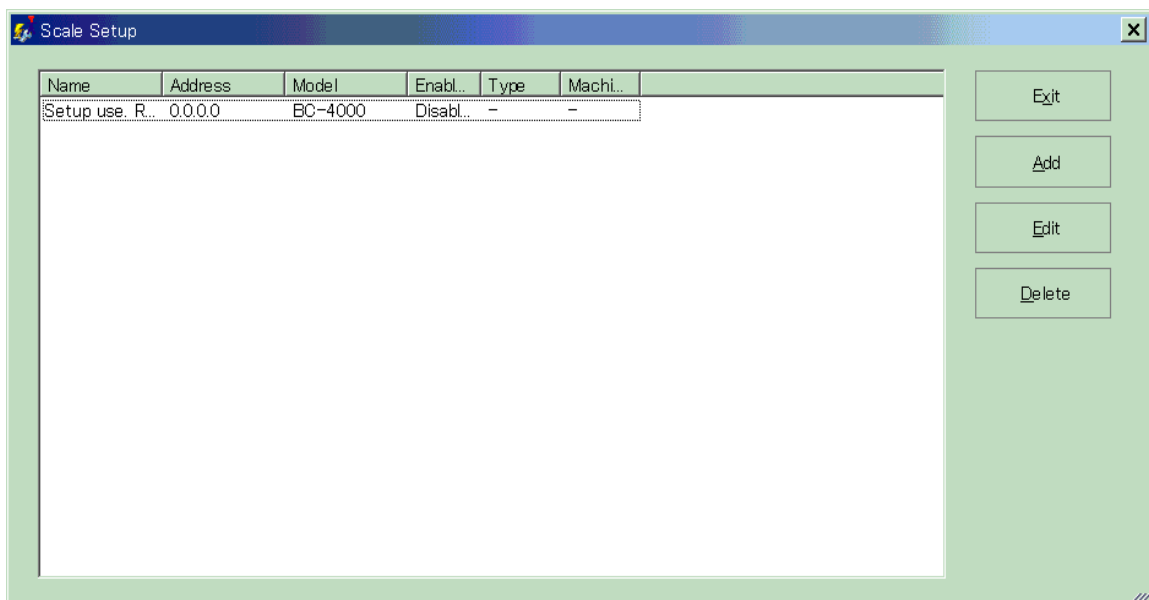


Typically you should use the default database file.

If you want to use a different file path for the MS-Access database, click the **Browse** button to select the database file name. If the file name you enter does not already exist, SLP-V Lite will create it automatically.

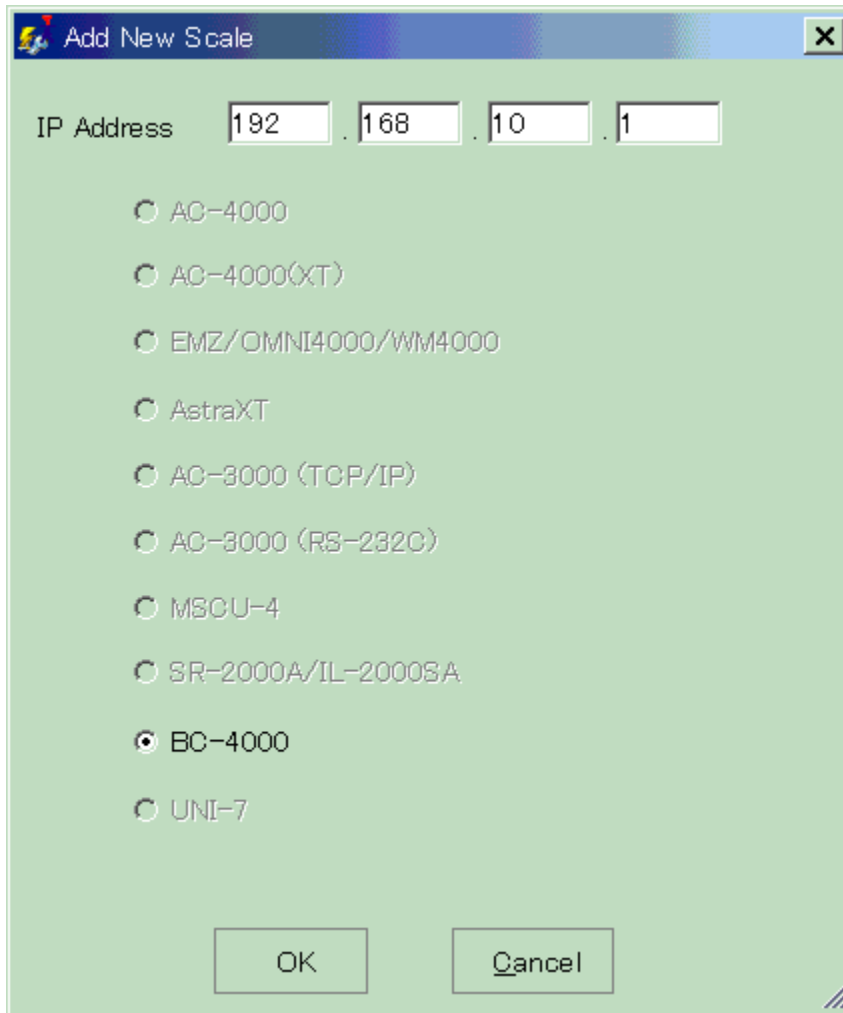
When finished, click OK to save your settings and return to the **Welcome to SLP-V Lite** window.

2. Click the **Scale Network Settings** link to open the following window.



SLP-V Lite Installation Guide

3. Click the **Delete** button to remove the default scale, then use the **Add** button to add each scale in your network. The following window appears each time you click the **Add** button.



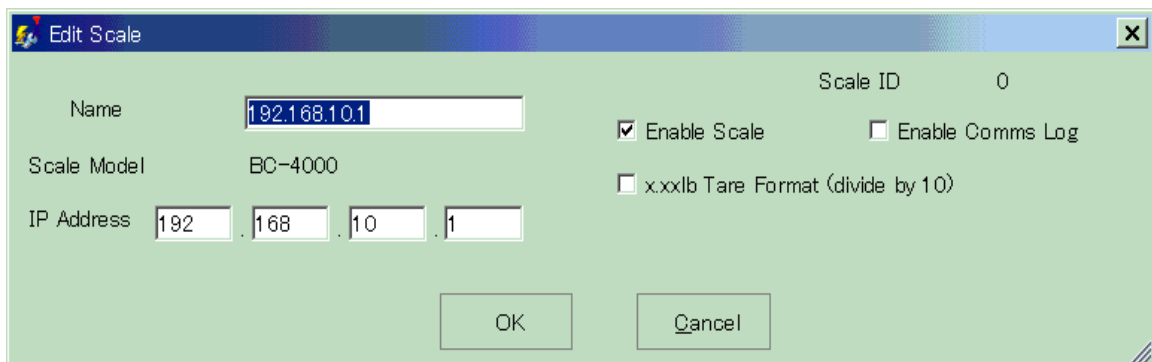
The 'Add New Scale' dialog box features a title bar with a close button. Below the title bar, the IP Address is entered as 192.168.10.1. A list of scale models is provided with radio buttons for selection. The 'BC-4000' model is selected. At the bottom, there are 'OK' and 'Cancel' buttons.

IP Address
192 . 168 . 10 . 1

- AC-4000
- AC-4000(XT)
- EMZ/OMNI4000/WM4000
- AstraXT
- AC-3000 (TCP/IP)
- AC-3000 (RS-232C)
- MSCU-4
- SR-2000A/IL-2000SA
- BC-4000
- UNI-7

Buttons: OK, Cancel

Enter the IP address of the scale and select the scale model (if applicable), then click the **OK** button. The following window appears for editing the scale settings.



The 'Edit Scale' dialog box has a title bar with a close button. It displays the Name as 192.168.10.1, Scale Model as BC-4000, and IP Address as 192.168.10.1. The Scale ID is 0. There are checkboxes for 'Enable Scale' (checked), 'Enable Comms Log', and 'x.xxlb Tare Format (divide by 10)'. At the bottom, there are 'OK' and 'Cancel' buttons.

Name	Scale ID
192.168.10.1	0

Scale Model: BC-4000

IP Address: 192 . 168 . 10 . 1

Options:
 Enable Scale
 Enable Comms Log
 x.xxlb Tare Format (divide by 10)

Buttons: OK, Cancel

SLP-V Lite Installation Guide

In most cases you can simply click **OK** to accept the default settings. It is useful for future reference to modify the Name to indicate the location of the scale. If you need to make any other changes, refer to on-line help for details.

4. When you have finished defining the scales, return to the **Welcome to SLP-V Lite** window and click the **Close** button.
5. The main SLP-V Lite application now starts.

Note: Using SLP-V Lite with a Firewall

If you have a firewall installed on your PC, your firewall software may display popup windows when you first run SLP-V Lite asking whether to allow SLP-V Lite to have access to the network. Always permit access as otherwise SLP-V Lite will be unable to communicate with the scales or with client PCs.

Once you have started SLP-V Lite, select **Index** from the **Help** menu to open on-line help for a full explanation of how to use the software.