

680/682 Synergy Indicator

Configuring Second Generation CPU Boards

Issue: The scale will not display weight due to reference error with 4-wire load cell connection

Solution: Install jumper wires for 4-wire load cell connection

First generation CPU boards have sense switches and are configured through the indicator menu while the second generation does not have sense switches and requires installing jumper wires in 4-wire configuration to avoid errors.



Manuals are available from Rice Lake Weighing Systems at www.ricelake.com/manuals

Warranty information is available at www.ricelake.com/warranties

Locate the revision sticker on the CPU board as shown in [Figure 1](#).

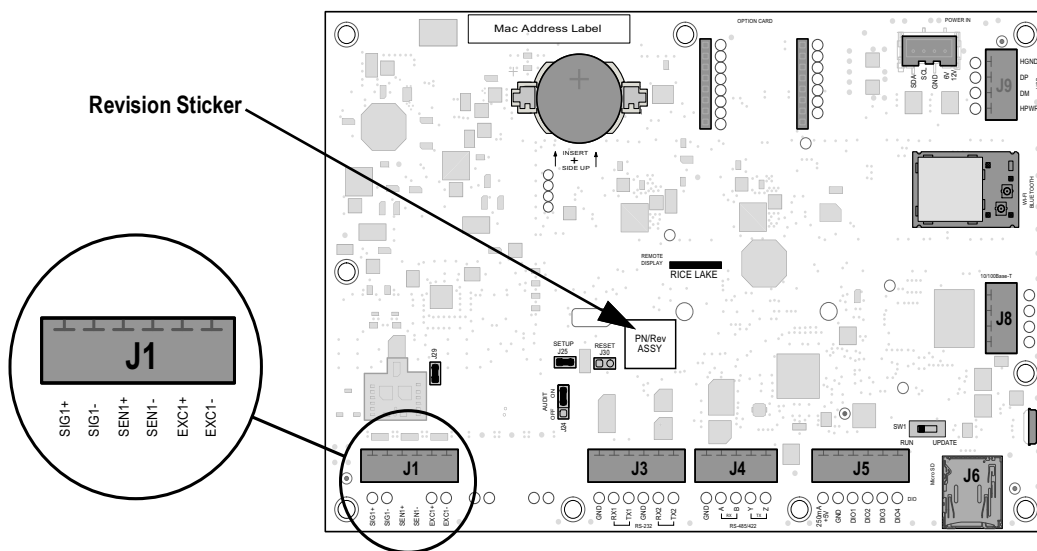


Figure 1. Revision Sticker Location

See [Table 1](#) to identify the CPU board generation.

Generation	Revision	Configuration Method
First Generation	A - J1	Menu configuration
Second Generation	J2	Jumper wires

Table 1. Generation Identification



IMPORTANT: To configure a second generation CPU board for a 4-wire connection, install a jumper wire between EXC+ and SEN+ and another jumper wire between EXC- and SEN-.



© Rice Lake Weighing Systems Content subject to change without notice.

230 W. Coleman St. • Rice Lake, WI 54868 • USA USA: 800-472-6703 • International: +1-715-234-9171