

Film Insertion Unit

Part Number/Price

REF #	PART #	DESCRIPTION	QTY	SYNONYM	PRICE
1	189256	Collar	8	000-135-7088-10	Consult
2	47165*	Bearing, radial	10	000-000-3610-03	Consult
5	172563*	Roller assy, clutch, one groove (does not include 1 pc. #2 or ret. ring)	8	000-139-9381-11	Consult
6	172565*	Roller assy, clutch, five grooves (does not include 1 pc. #2 or ret. ring)	2	000-136-3745-09	Consult
—	200445	Retaining ring, 8 mm shaft, black oxide	20	000-000-4192-07	Consult
7	189262	Holder, film, upper roll	1	000-134-8338-48	Consult
8	172566	Holder, film, lower roll	2	000-134-8341-40	Consult
9	189265	Block B, change over	2	000-135-7304-05	Consult
10	189267*	Shaft, clutch, roller, from s/n 100524993	2	000-133-8393-34	Consult
—	200468	Bolt, socket hex, w/spring washer, M5 x 12 SST	1	000-004-2110-03	Consult
11	Consult	Bracket, joint	1	000-133-8431-23	Consult
—	200463	Bolt, hex socket M3 x 8mm, high strength black oxide	1	000-126-7076-04	Consult
12	189269	Bracket, catch	1	000-134-8016-27	Consult
13	Consult	Detect plate, transfer	1	000-137-8064-20	Consult
14	192861	Shaft, joint	2	000-133-8438-00	Consult
—	200463	Bolt, hex socket M3 x 8mm, high strength black oxide	1	000-126-7076-04	Consult
15	199748	Shaft, roller	1	000-137-8034-36	Consult
16	157853	Catch, push latch	2	000-070-1072-06	Consult
17	Consult	Bracket, joint, upper	1	000-133-8434-25	Consult
18	195219	Bracket, catch, upper	1	000-134-8010-26	Consult
20	199749	Stay, holder, film	1	100-001-6587-02	Consult
22	199750	Shaft, change over	1	000-133-8463-61	Consult
—	200468	Bolt, socket hex, w/spring washer, M5 x 12 SST	1	000-004-2110-03	Consult
23	189230	Key, parallel, both ends round	2	000-009-9828-05	Consult
24	199751	Key, parallel, both ends round	1	000-057-9310-04	Consult
25	198677	Collar, spacer	1	000-042-5082-05	Consult
26	199752	Gear, flat, change	1	000-135-7390-15	Consult
27	188065	Frame, change over	1	100-004-5821-00	Consult
28	188066	Frame, change over	1	100-004-5822-00	Consult
29	160748	Bearing radial, deep groove	2	000-094-2649-05	Consult
30	191014	Stay, interface	1	000-139-9350-21	Consult
31	172567	Housing, linear bush	2	000-135-7305-09	Consult
32	172568	Bearing, linear bush	4	000-070-1070-09	Consult
33	Consult	Collar	1	000-063-1176-02	Consult
34	Consult	Detect plate, transfer, move	1	000-147-0655-02	Consult
35	Consult	Bracket, motor	1	000-133-8426-32	Consult
36	125715	Motor assy, stepping Z, M304	1	000-111-8337-04	Consult
37	199753	Gear, flat	1	000-135-7393-07	Consult
38	Consult	Shaft, rack, brake	1	000-133-8427-36	Consult
39	Consult	Stopper, rack	1	000-139-9253-14	Consult
40	Consult	Bracket, solenoid	1	000-133-8387-32	Consult
41	Consult	Link	1	000-046-2225-09	Consult
42	171855	White gear, flat, idler	1	000-135-7084-06	Consult
43	172569	Solenoid assy, L302	1	000-138-5600-02	Consult
44	199754	Bracket, sheet	1	000-147-0978-04	Consult
—	168506	Wire anti-static, 20 in (sold by the inch)	2	142-6094-07	Consult
45	172570	Spring, coil, compressive	1	000-133-8484-11	Consult
46	Consult	Collar	1	000-017-6855-00	Consult
47	Consult	Bracket, cutter, loading	1	100-001-6573-00	Consult
48	Consult	Plate B, cutter, trimming	2	100-001-6574-00	Consult
49	198652	Cutter	2	000-139-9413-04	Consult
50	Consult	Frame, rear	1	000-147-0915-19	Consult
51	Consult	Plate A, interference	1	000-076-1711-06	Consult
52	204693	Shaft, linear	2	000-133-8478-09	Consult
53	172571	Spring, coil, compressive	2	000-133-8488-06	Consult
54	Consult	Bracket, sensor	2	000-134-8090-14	Consult
55	Consult	Bracket, drive, transfer	1	100-004-5826-00	Consult
56	189111	Rubber pad	2	000-039-8056-01	Consult
*ASSY	206218	Shaft assy, clutch roller, from s/n 100524993, March 2021 (includes #2, 5, 6, and 10)	2	100-044-0361-00	Consult

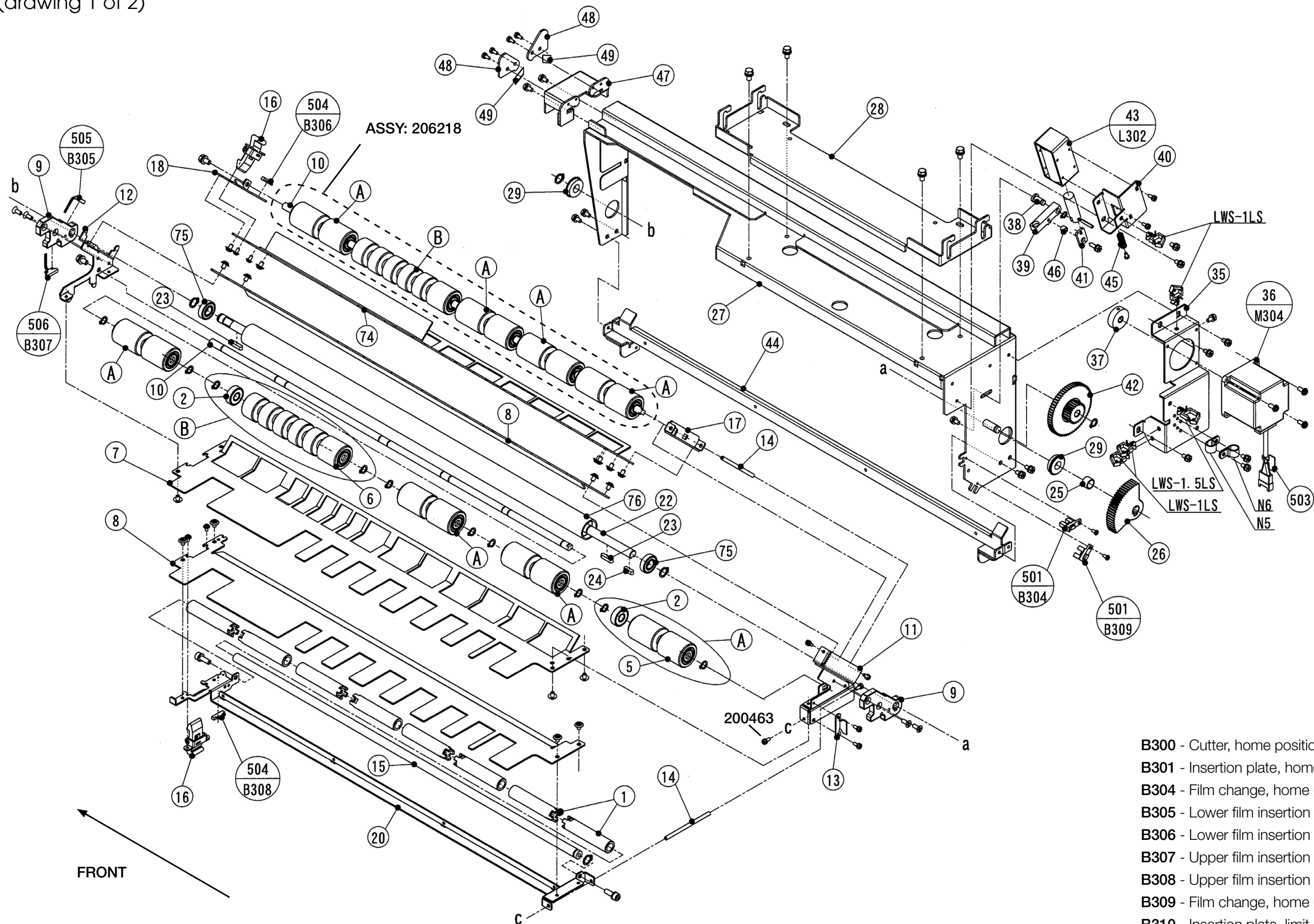
Film Insertion Unit

Part Number/Price

REF #	PART #	DESCRIPTION	QTY	SYNONYM	PRICE
57	172572	Bearing, radial, deep groove	2	000-094-2650-00	Consult
58	204691	Bracket, pulley, idler	1	100-004-5831-00	Consult
59	191003	Shaft, drive	1	000-133-8404-12	Consult
60	191006	Timing pulley, S5M, BF	1	000-057-0324-03	Consult
61	Consult	Bracket, motor, s-fold	1	100-004-5827-00	Consult
62	172573	Motor assy, stepping X, M303	1	000-138-2122-08	Consult
63	172554	Timing belt, HPS5M	1	000-109-8058-13	Consult
64	191007	Key, parallel, both ends round	1	000-002-7289-00	Consult
65	204692	Timing pulley, S5M, AF	1	000-141-6389-08	Consult
66	211708	Sheet, cutter	1	000-133-8381-00	Consult
67	187231	Lever, drive	1	000-135-7391-00	Consult
68	172319	Rod end, type I, F	1	000-000-3738-06	Consult
69	172320	Rod end, type I, F	1	000-004-1447-04	Consult
70	189102	Hex nut, T1, left-hand thread	1	000-000-0109-02	Consult
71	189270	Threaded rod, turnbuckle, mm	1	000-133-8396-16	Consult
74	192219	Holder, film, lower roll	1	100-002-1085-03	Consult
75	47168	Bearing, radial, deep groove	2	000-000-3659-05	Consult
76	189271	Roller, film, lower	1	100-002-2344-00	Consult
501	171837	Photo interrupter, trans, straight connector, B300, B301, B304, B309, B310	5	000-132-6468-07	Consult
502	Consult	Accessory, band, marking tie	1	000-135-2727-09	Consult
503	Consult	Accessory, band, marking tie	1	000-135-2728-02	Consult
504	105979	Magnet, green, frame, upper B308, lower B306	2	000-067-2609-01	Consult
—	189088	Screw, mount, Cross-Head, M2x4, SST	4	—	Consult
505/506	203971	Sensor assy, open/close, upper & lower, B305, B307	1	100-038-2184-00	Consult
—	189088	Screw, mount, Cross-Head, M2x4, SST	2	—	Consult
507	172574	Fan assy, fan heater left, M306	1	100-002-1276-00	Consult
999	171856	Magnet, green proximity sensor, 3-inch leads, no connector		100-006-2238-00	Consult

Ishida WM-Ai

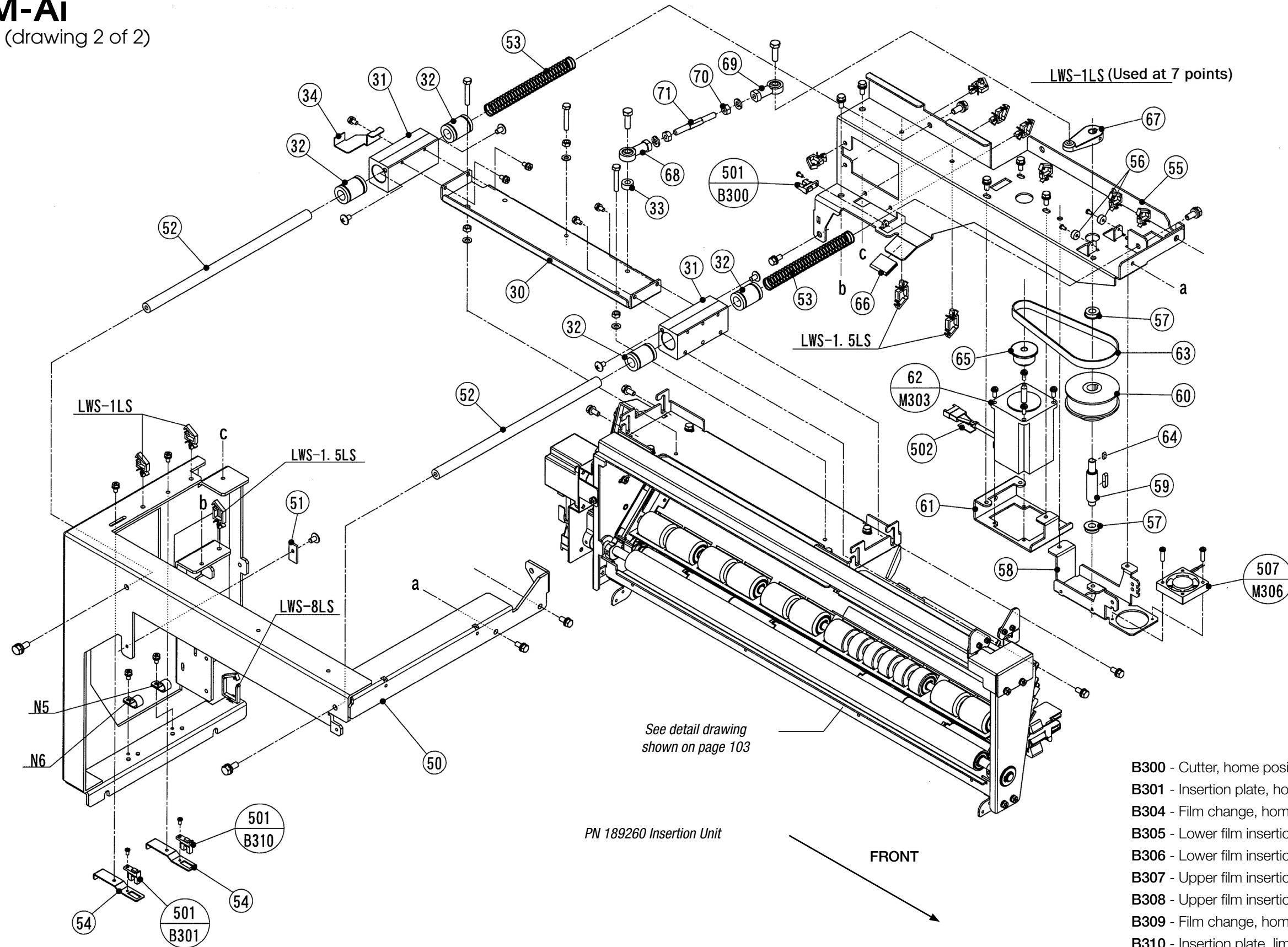
Film Insertion Unit (drawing 1 of 2)



- B300 - Cutter, home position
- B301 - Insertion plate, home position
- B304 - Film change, home position, inside, upper
- B305 - Lower film insertion plate, open/closed
- B306 - Lower film insertion plate, open/closed, magnet
- B307 - Upper film insertion plate, open/closed
- B308 - Upper film insertion plate, open/closed, magnet
- B309 - Film change, home position, outside, lower
- B310 - Insertion plate, limit position

Ishida WM-Ai

Film Insertion Unit (drawing 2 of 2)



- B300 - Cutter, home position
- B301 - Insertion plate, home position
- B304 - Film change, home position, inside, upper
- B305 - Lower film insertion plate, open/closed
- B306 - Lower film insertion plate, open/closed, magnet
- B307 - Upper film insertion plate, open/closed
- B308 - Upper film insertion plate, open/closed, magnet
- B309 - Film change, home position, outside, lower
- B310 - Insertion plate, limit position