



UNI-9 DB / XL Preventive Maintenance Guide

The following information is provided by Rice Lake Weighing Systems to assist Authorized Service Offices performing preventive maintenance on Rice Lake Weighing Systems Wrapping and weighing equipment in Costco Wholesale Warehouses

Ishida UNI 9 DB / XL Preventative Maintenance Guide

Inspection Date:	Meat Manager Signature:
Costco Store Number:	Deli Manager Signature:
Service Company:	Hand Wrap: Serial Number, Print Count and Overall Condition
Technician(s):	SN: Head Usage: Good / Fair / Poor
Deli Prep: Serial Number, Print Count and Overall Condition	Seafood #1: Serial Number, Print Count and Overall Condition
SN: Head Usage: Good / Fair / Poor	SN: Head Usage: Good / Fair / Poor
Deli Rot: Serial Number, Print Count and Overall Condition	Seafood #2: Serial Number, Print Count and Overall Condition
SN: Head Usage: Good / Fair / Poor	SN: Head Usage: Good / Fair / Poor
Seafood #3: Serial Number, Print Count and Overall Condition	Seafood #4: Serial Number, Print Count and Overall Condition
SN: Head Usage: Good / Fair / Poor	SN: Head Usage: Good / Fair / Poor

This UNI-9 DB / XL Preventative Maintenance Guide is divided into three intervals - **DAILY, 6-MONTH, YEARLY**. The DAILY maintenance is generally the responsibility of the end-user. It is recommended that the servicing technician review these daily maintenance checks with the appropriate manager, especially if it is evident these checks are not being performed properly.

Pages 1-18 should be printed, filled, scanned and returned to RLWS along with photographic documentation of all issues such as: user abuse, water damage/corrosion, premature failures, etc.).

** Allow 30 minutes for a 6-MONTH inspection and 45 minutes for a YEARLY inspection for each scale. *

	Sections		Sections		Sections
1	SCREEN DISPLAY	4	SCALE	7	ADJUSTMENTS, PARTS
2	KEYBOARD ASSEMBLY	5	DATA BACKUP	8	SAMPLE LABELS
3	PRINTER	6	FIRMWARE	9	REFERENCE DRAWINGS

Required materials:

- | | | |
|--|---|--|
| <ul style="list-style-type: none"> • Isopropyl Alcohol • Wrench set, metric • Clean, lint-free rags • Compressed Air / | <ul style="list-style-type: none"> • Socket set, metric (optional) • Screwdrivers, assorted • Allen wrench set, metric • Machinist Ruler • White Grease RLWS PN 77933 or CRC SL35600 | <ul style="list-style-type: none"> • Adhesive remover (for labels) • Thermal head cleaning kit • Test weight set (30 lbs for DB and 60lbs for XL) • USB flash drive (8 GB or smaller, FAT32 format, USB 3.0) |
|--|---|--|

The parts listed in the Check Points and Replacement Parts columns on pages 2~17 are identified by a drawing number and part number. The drawing number refers to the parts drawings on pages 19~25. For example, in section 1: Screen Display on page 2, the LCD display is identified as #103, p/n 185546. This refers to #103 on the Screen Display drawing on page 20.

Ishida UNI 9 DB Deli Prep Preventative Maintenance Guide

	Section	Check Points	Comments	Tool/Grease/ Program	Replacement Parts	Check			✓
						D	6	Y	
1	SCREEN DISPLAY	Contrast - LCD Display (#103) - Display Control Bd (#104)	Verify brightness of the display. Replace Invertor or Display as needed.	Adjust Menu, Display Check	185546 (#103) 87519 (#104)		X	X	
		Touchscreen operation - Touch Panel (#102) - Sheet (#4)	Confirm accuracy. Calibrate or replace as needed.	Adjust Menu, Touch Screen	87529 (#102) 185539 (#4)		X	X	
		Touchscreen cleaning	Clean touchscreen display	Cloth		X	X	X	
2	KEYBOARD ASSEMBLY	Keyboard - Keyboard Assy (#105)	Confirm all keys function and show as dark squares	Adjust Menu, Key Check	87525 (#105)		X	X	
		Keyboard Transparent cover - Sheet (#4)	Clean keyboard cover. Replace as needed.	Cloth	185539 (#4)	X	X	X	
3	PRINTER	Printing Quality - Print Head (Printer Unit: #102)	Verify print is complete and legible. Clean print head.	Adjust Menu, Printer, Head tab, Test Print: Checker. Cloth. Isopropyl	158271 (#102)		X	X	
		Label Feeding - Print Roller (Printer Cassette #5)	Check if printing expands or contracts. Check and clean print roller. Check for cuts. Remove paper dust.	Cloth. Isopropyl alcohol. Vacuum.	163028 (#5)		X	X	
		Label Gap Sensor - Photo interrupter, reflection Printer Frame (Printer Frame #100) - Block B, Prism (Printer Cassette #14)	Check that sensor readings are normal (baseline near 60, spike near 160). Clean, calibrate, or replace sensors and prism as needed. Clean pin hole on the cassette.	Adjust Menu, Printer, Label Feed tab	87533 (#100) 182039 (#14)		X	X	

Ishida UNI 9 DB Deli Prep Preventative Maintenance Guide

	Section	Check Points	Comments	Tool/Grease/ Program	Replacement Parts	Check			✓
						D	6	Y	
3	PRINTER (CONT)	Peel sensor - Transmitter, Left Side (Printer Frame #101) Receiver, Right Side (Printer Frame #102)	Check that sensor readings are normal (over 200 when blocked and under 40 when open). Clean, calibrate, or replace sensors as needed.	Adjust Menu, Printer, Peel Sensor tab	158272 (#101) 158274 (#102)		X	X	
		Drive Gears - Gear Flat (Printer Frame #6) - Timing Pulley S2M (Printer Cassette #6) - Timing pulley, S2M, with gear (Printer Cassette #17) - - Pulley, idler (Printer Cassette #18) - - Torque limiter (Printer Cassette #23) - Timing belt, S2M (Printer Cassette #195)	Clean debris. Examine gears and belt for cracks or chips. Verify cassette holds and printer drive gears mesh well at home position		181151 (Frame #6) 175372 (Cassette #6) 175375 (#17) 181141 (#18) 181144 (#23) 181146 (#195)			X	
		Home position - Cassette Sensor (Main Body Frame #102) - Seal Sensor (Printer Cassette #31)	Clean and inspect the Seal and Sensor for wear.	Cloth. Isopropyl alcohol.	93235 (#31)			X	
		Take Spool - Bobbin Roll (Printer Cassette #24)	Clean and inspect.	Cloth. Isopropyl alcohol	162104 (#24)		X	X	

Ishida UNI 9 DB Deli Prep Preventative Maintenance Guide

	Section	Check Points	Comments	Tool/Grease/ Program	Replacement Parts	Check			✓
						D	6	Y	
4	SCALE	Weighing	Correct weighing	1 lb. test weight		X	X	X	
		Check zero and calibration		30 lb. test weights			X	X	
		Shift test in all four		5 lb. test weight			X	X	
		Seal	Refer to local regulations	Lead or paper seal			X	X	
		Stainless Scale Platter - Platter (#1)	Replace if damaged.	Soap & Water (Daily)	171675 (#1)		X	X	
5	DATA BACKUP		Insert a blank USB stick of 8 gig of less into the access hatch on the upper left side. Create and name a backup location under "OUTPUT SELECT"	Setup Menu, File Save/Load, Scale >USB tab, Output Select, Exec, All Sel, Exec, Exec. Also possible with SLP-5.			X	X	
6	FIRMWARE	Main Firmware:	Load firmware on a blank USB stick of 8 gig or less. Insert into the access hatch on the upper left side. Reboot Afterwards.	Adjust Menu, Download, Main tab "USB>MAIN (PRG+IMG)", USB Memory Folder, select file, EXEC, EXEC.					
		Sub Apps:	Load both sub apps; reboot after each. Take a second backup once the firmware upgrades have been completed.	Adjust Menu, Download, Sub App tab, Printer, Exec, Exec. Reboot. Adjust Menu, Download, Sub App tab, FPGA, Exec, Exec. Reboot.					

Ishida UNI 9 DB Deli Prep Preventative Maintenance Guide

7. ADJUSTMENTS, COMMENTS, PARTS REQUIRED, ETC.

Section	Inspection Items and Contents	Comments	Replacement Parts

8. SAMPLE LABELS

[SAMPLE LABELS]

Ishida UNI 9 DB Deli Rotisserie Preventative Maintenance

	Section	Check Points	Comments	Tool/Grease/ Program	Replacement Parts	Check			✓
						D	6	Y	
1	SCREEN DISPLAY	Contrast - LCD Display (#103) - Display Control Bd (#104)	Verify brightness of the display. Replace Invertor or Display as needed.	Adjust Menu, Display Check	185546 (#103) 87519 (#104)		X	X	
		Touchscreen operation - Touch Panel (#102) - Sheet (#4)	Confirm accuracy. Calibrate or replace as needed.	Adjust Menu, Touch Screen	87529 (#102) 185539 (#4)		X	X	
		Touchscreen cleaning	Clean touchscreen display	Cloth		X	X	X	
2	KEYBOARD ASSEMBLY	Keyboard - Keyboard Assy (#105)	Confirm all keys function and show as dark squares	Adjust Menu, Key Check	87525 (#105)		X	X	
		Keyboard Transparent cover - Sheet (#4)	Clean keyboard cover. Replace as needed.	Cloth	185539 (#4)	X	X	X	
3	PRINTER	Printing Quality - Print Head (Printer Unit: #102)	Verify print is complete and legible. Clean print head.	Adjust Menu, Printer, Head tab, Test Print: Checker. Cloth. Isopropyl	158271 (#102)		X	X	
		Label Feeding - Print Roller (Printer Cassette #5)	Check if printing expands or contracts. Check and clean print roller. Check for cuts. Remove paper dust.	Cloth. Isopropyl alcohol. Vacuum.	163028 (#5)		X	X	
		Label Gap Sensor - Photo interrupter, reflection Printer Frame (Printer Frame #100) - Block B, Prism (Printer Cassette #14)	Check that sensor readings are normal (baseline near 60, spike near 160). Clean, calibrate, or replace sensors and prism as needed. Clean pin hole on the cassette.	Adjust Menu, Printer, Label Feed tab	87533 (#100) 182039 (#14)		X	X	

Ishida UNI 9 DB Deli Rotisserie Preventative Maintenance

	Section	Check Points	Comments	Tool/Grease/ Program	Replacement Parts	Check			✓
						D	6	Y	
3	PRINTER (CONT)	Peel sensor - Transmitter, Left Side (Printer Frame #101) Receiver, Right Side (Printer Frame #102)	Check that sensor readings are normal (over 200 when blocked and under 40 when open). Clean, calibrate, or replace sensors as needed.	Adjust Menu, Printer, Peel Sensor tab	158272 (#101) 158274 (#102)		X	X	
		Drive Gears - Gear Flat (Printer Frame #6) - Timing Pulley S2M (Printer Cassette #6) - Timing pulley, S2M, with gear (Printer Cassette #17) - - Pulley, idler (Printer Cassette #18) - - Torque limiter (Printer Cassette #23) - Timing belt, S2M (Printer Cassette #195)	Clean debris. Examine gears and belt for cracks or chips. Verify cassette holds and printer drive gears mesh well at home position		181151 (Frame #6) 175372 (Cassette #6) 175375 (#17) 181141 (#18) 181144 (#23) 181146 (#195)			X	
		Home position - Cassette Sensor (Main Body Frame #102) - Seal Sensor (Printer Cassette #31)	Clean and inspect the Seal and Sensor for wear.	Cloth. Isopropyl alcohol.	93235 (#31)			X	
		Take Spool - Bobbin Roll (Printer Cassette #24)	Clean and inspect.	Cloth. Isopropyl alcohol	162104 (#24)		X	X	

Ishida UNI 9 DB Deli Rotisserie Preventative Maintenance

	Section	Check Points	Comments	Tool/Grease/ Program	Replacement Parts	Check			✓
						D	6	Y	
4	SCALE	Weighing	Correct weighing	1 lb. test weight		X	X	X	
		Check zero and calibration		30 lb. test weights			X	X	
		Shift test in all four		5 lb. test weight			X	X	
		Seal	Refer to local regulations	Lead or paper seal			X	X	
		Stainless Scale Platter - Platter (#1)	Replace if damaged.	Soap & Water (Daily)	171675 (#1)		X	X	
5	DATA BACKUP		Insert a blank USB stick of 8 gig of less into the access hatch on the upper left side. Create and name a backup location under "OUTPUT SELECT"	Setup Menu, File Save/Load, Scale >USB tab, Output Select, Exec, All Sel, Exec, Exec. Also possible with SLP-5.			X	X	
6	FIRMWARE	Main Firmware:	Load firmware on a blank USB stick of 8 gig or less. Insert into the access hatch on the upper left side. Reboot Afterwards.	Adjust Menu, Download, Main tab "USB>MAIN (PRG+IMG)", USB Memory Folder, select file, EXEC, EXEC.					
		Sub Apps:	Load both sub apps; reboot after each. Take a second backup once the firmware upgrades have been completed.	Adjust Menu, Download, Sub App tab, Printer, Exec, Exec. Reboot. Adjust Menu, Download, Sub App tab, FPGA, Exec, Exec. Reboot.					

Ishida UNI 9 DB Deli Rotisserie Preventative Maintenance

9. ADJUSTMENTS, COMMENTS, PARTS REQUIRED, ETC.

Section	Inspection Items and Contents	Comments	Replacement Parts

10. SAMPLE LABELS

[SAMPLE LABELS]

Ishida UNI 9 DB Deli Seafood #1 Preventative Maintenance

	Section	Check Points	Comments	Tool/Grease/ Program	Replacement Parts	Check			✓
						D	6	Y	
1	SCREEN DISPLAY	Contrast - LCD Display (#103) - Display Control Bd (#104)	Verify brightness of the display. Replace Invertor or Display as needed.	Adjust Menu, Display Check	185546 (#103) 87519 (#104)		X	X	
		Touchscreen operation - Touch Panel (#102) - Sheet (#4)	Confirm accuracy. Calibrate or replace as needed.	Adjust Menu, Touch Screen	87529 (#102) 185539 (#4)		X	X	
		Touchscreen cleaning	Clean touchscreen display	Cloth		X	X	X	
2	KEYBOARD ASSEMBLY	Keyboard - Keyboard Assy (#105)	Confirm all keys function and show as dark squares	Adjust Menu, Key Check	87525 (#105)		X	X	
		Keyboard Transparent cover - Sheet (#4)	Clean keyboard cover. Replace as needed.	Cloth	185539 (#4)	X	X	X	
3	PRINTER	Printing Quality - Print Head (Printer Unit: #102)	Verify print is complete and legible. Clean print head.	Adjust Menu, Printer, Head tab, Test Print: Checker. Cloth. Isopropyl	158271 (#102)		X	X	
		Label Feeding - Print Roller (Printer Cassette #5)	Check if printing expands or contracts. Check and clean print roller. Check for cuts. Remove paper dust.	Cloth. Isopropyl alcohol. Vacuum.	163028 (#5)		X	X	
		Label Gap Sensor - Photo interrupter, reflection Printer Frame (Printer Frame #100) - Block B, Prism (Printer Cassette #14)	Check that sensor readings are normal (baseline near 60, spike near 160). Clean, calibrate, or replace sensors and prism as needed. Clean pin hole on the cassette.	Adjust Menu, Printer, Label Feed tab	87533 (#100) 182039 (#14)		X	X	

Ishida UNI 9 DB Deli Seafood #1 Preventative Maintenance

	Section	Check Points	Comments	Tool/Grease/ Program	Replacement Parts	Check			✓	
						D	6	Y		
3	PRINTER (CONT)	Peel sensor - Transmitter, Left Side (Printer Frame #101) Receiver, Right Side (Printer Frame #102)	Check that sensor readings are normal (over 200 when blocked and under 40 when open). Clean, calibrate, or replace sensors as needed.	Adjust Menu, Printer, Peel Sensor tab	158272 (#101) 158274 (#102)		X	X		
		Drive Gears - Gear Flat (Printer Frame #6) - Timing Pulley S2M (Printer Cassette #6) - Timing pulley, S2M, with gear (Printer Cassette #17) - - Pulley, idler (Printer Cassette #18) - - Torque limiter (Printer Cassette #23) - Timing belt, S2M (Printer Cassette #195)	Clean debris. Examine gears and belt for cracks or chips. Verify cassette holds and printer drive gears mesh well at home position		181151 (Frame #6) 175372 (Cassette #6) 175375 (#17) 181141 (#18) 181144 (#23) 181146 (#195)			X		
		Home position - Cassette Sensor (Main Body Frame #102) - Seal Sensor (Printer Cassette #31)	Clean and inspect the Seal and Sensor for wear.	Cloth. Isopropyl alcohol.	93235 (#31)			X		
		Take Spool - Bobbin Roll (Printer Cassette #24)	Clean and inspect.	Cloth. Isopropyl alcohol	162104 (#24)		X	X		

Ishida UNI 9 DB Deli Seafood #1 Preventative Maintenance

	Section	Check Points	Comments	Tool/Grease/ Program	Replacement Parts	Check			✓
						D	6	Y	
4	SCALE	Weighing	Correct weighing	1 lb. test weight		X	X	X	
		Check zero and calibration		30 lb. test weights			X	X	
		Shift test in all four		5 lb. test weight			X	X	
		Seal	Refer to local regulations	Lead or paper seal			X	X	
		Stainless Scale Platter - Platter (#1)	Replace if damaged.	Soap & Water (Daily)	171675 (#1)		X	X	
5	DATA BACKUP		Insert a blank USB stick of 8 gig of less into the access hatch on the upper left side. Create and name a backup location under "OUTPUT SELECT"	Setup Menu, File Save/Load, Scale >USB tab, Output Select, Exec, All Sel, Exec, Exec. Also possible with SLP-5.			X	X	
6	FIRMWARE	Main Firmware:	Load firmware on a blank USB stick of 8 gig or less. Insert into the access hatch on the upper left side. Reboot Afterwards.	Adjust Menu, Download, Main tab "USB>MAIN (PRG+IMG)", USB Memory Folder, select file, EXEC, EXEC.					
		Sub Apps:	Load both sub apps; reboot after each. Take a second backup once the firmware upgrades have been completed.	Adjust Menu, Download, Sub App tab, Printer, Exec, Exec. Reboot. Adjust Menu, Download, Sub App tab, FPGA, Exec, Exec. Reboot.					

Ishida UNI 9 DB Deli Seafood #1 Preventative Maintenance

11. ADJUSTMENTS, COMMENTS, PARTS REQUIRED, ETC.

Section	Inspection Items and Contents	Comments	Replacement Parts

12. SAMPLE LABELS

[SAMPLE LABELS]

Ishida UNI 9 DB Deli Seafood #2 Preventative Maintenance

	Section	Check Points	Comments	Tool/Grease/ Program	Replacement Parts	Check			✓
						D	6	Y	
1	SCREEN DISPLAY	Contrast - LCD Display (#103) - Display Control Bd (#104)	Verify brightness of the display. Replace Invertor or Display as needed.	Adjust Menu, Display Check	185546 (#103) 87519 (#104)		X	X	
		Touchscreen operation - Touch Panel (#102) - Sheet (#4)	Confirm accuracy. Calibrate or replace as needed.	Adjust Menu, Touch Screen	87529 (#102) 185539 (#4)		X	X	
		Touchscreen cleaning	Clean touchscreen display	Cloth		X	X	X	
2	KEYBOARD ASSEMBLY	Keyboard - Keyboard Assy (#105)	Confirm all keys function and show as dark squares	Adjust Menu, Key Check	87525 (#105)		X	X	
		Keyboard Transparent cover - Sheet (#4)	Clean keyboard cover. Replace as needed.	Cloth	185539 (#4)	X	X	X	
3	PRINTER	Printing Quality - Print Head (Printer Unit: #102)	Verify print is complete and legible. Clean print head.	Adjust Menu, Printer, Head tab, Test Print: Checker. Cloth. Isopropyl	158271 (#102)		X	X	
		Label Feeding - Print Roller (Printer Cassette #5)	Check if printing expands or contracts. Check and clean print roller. Check for cuts. Remove paper dust.	Cloth. Isopropyl alcohol. Vacuum.	163028 (#5)		X	X	
		Label Gap Sensor - Photo interrupter, reflection Printer Frame (Printer Frame #100) - Block B, Prism (Printer Cassette #14)	Check that sensor readings are normal (baseline near 60, spike near 160). Clean, calibrate, or replace sensors and prism as needed. Clean pin hole on the cassette.	Adjust Menu, Printer, Label Feed tab	87533 (#100) 182039 (#14)		X	X	

Ishida UNI 9 DB Deli Seafood #2 Preventative Maintenance

	Section	Check Points	Comments	Tool/Grease/ Program	Replacement Parts	Check			✓
						D	6	Y	
3	PRINTER (CONT)	Peel sensor - Transmitter, Left Side (Printer Frame #101) Receiver, Right Side (Printer Frame #102)	Check that sensor readings are normal (over 200 when blocked and under 40 when open). Clean, calibrate, or replace sensors as needed.	Adjust Menu, Printer, Peel Sensor tab	158272 (#101) 158274 (#102)		X	X	
		Drive Gears - Gear Flat (Printer Frame #6) - Timing Pulley S2M (Printer Cassette #6) - Timing pulley, S2M, with gear (Printer Cassette #17) - - Pulley, idler (Printer Cassette #18) - - Torque limiter (Printer Cassette #23) - Timing belt, S2M (Printer Cassette #195)	Clean debris. Examine gears and belt for cracks or chips. Verify cassette holds and printer drive gears mesh well at home position		181151 (Frame #6) 175372 (Cassette #6) 175375 (#17) 181141 (#18) 181144 (#23) 181146 (#195)			X	
		Home position - Cassette Sensor (Main Body Frame #102) - Seal Sensor (Printer Cassette #31)	Clean and inspect the Seal and Sensor for wear.	Cloth. Isopropyl alcohol.	93235 (#31)			X	
		Take Spool - Bobbin Roll (Printer Cassette #24)	Clean and inspect.	Cloth. Isopropyl alcohol	162104 (#24)		X	X	

Ishida UNI 9 DB Deli Seafood #2 Preventative Maintenance

	Section	Check Points	Comments	Tool/Grease/ Program	Replacement Parts	Check			✓
						D	6	Y	
4	SCALE	Weighing	Correct weighing	1 lb. test weight		X	X	X	
		Check zero and calibration		30 lb. test weights			X	X	
		Shift test in all four		5 lb. test weight			X	X	
		Seal	Refer to local regulations	Lead or paper seal			X	X	
		Stainless Scale Platter - Platter (#1)	Replace if damaged.	Soap & Water (Daily)	171675 (#1)		X	X	
5	DATA BACKUP		Insert a blank USB stick of 8 gig of less into the access hatch on the upper left side. Create and name a backup location under "OUTPUT SELECT"	Setup Menu, File Save/Load, Scale >USB tab, Output Select, Exec, All Sel, Exec, Exec. Also possible with SLP-5.			X	X	
6	FIRMWARE	Main Firmware:	Load firmware on a blank USB stick of 8 gig or less. Insert into the access hatch on the upper left side. Reboot Afterwards.	Adjust Menu, Download, Main tab "USB>MAIN (PRG+IMG)", USB Memory Folder, select file, EXEC, EXEC.					
		Sub Apps:	Load both sub apps; reboot after each. Take a second backup once the firmware upgrades have been completed.	Adjust Menu, Download, Sub App tab, Printer, Exec, Exec. Reboot. Adjust Menu, Download, Sub App tab, FPGA, Exec, Exec. Reboot.					

Ishida UNI 9 DB Deli Seafood #2 Preventative Maintenance

13. ADJUSTMENTS, COMMENTS, PARTS REQUIRED, ETC.

Section	Inspection Items and Contents	Comments	Replacement Parts

14. SAMPLE LABELS

[SAMPLE LABELS]

Ishida UNI 9 DB Deli Seafood #3 Preventative Maintenance

	Section	Check Points	Comments	Tool/Grease/ Program	Replacement Parts	Check			✓
						D	6	Y	
1	SCREEN DISPLAY	Contrast - LCD Display (#103) - Display Control Bd (#104)	Verify brightness of the display. Replace Invertor or Display as needed.	Adjust Menu, Display Check	185546 (#103) 87519 (#104)		X	X	
		Touchscreen operation - Touch Panel (#102) - Sheet (#4)	Confirm accuracy. Calibrate or replace as needed.	Adjust Menu, Touch Screen	87529 (#102) 185539 (#4)		X	X	
		Touchscreen cleaning	Clean touchscreen display	Cloth		X	X	X	
2	KEYBOARD ASSEMBLY	Keyboard - Keyboard Assy (#105)	Confirm all keys function and show as dark squares	Adjust Menu, Key Check	87525 (#105)		X	X	
		Keyboard Transparent cover - Sheet (#4)	Clean keyboard cover. Replace as needed.	Cloth	185539 (#4)	X	X	X	
3	PRINTER	Printing Quality - Print Head (Printer Unit: #102)	Verify print is complete and legible. Clean print head.	Adjust Menu, Printer, Head tab, Test Print: Checker. Cloth. Isopropyl	158271 (#102)		X	X	
		Label Feeding - Print Roller (Printer Cassette #5)	Check if printing expands or contracts. Check and clean print roller. Check for cuts. Remove paper dust.	Cloth. Isopropyl alcohol. Vacuum.	163028 (#5)		X	X	
		Label Gap Sensor - Photo interrupter, reflection Printer Frame (Printer Frame #100) - Block B, Prism (Printer Cassette #14)	Check that sensor readings are normal (baseline near 60, spike near 160). Clean, calibrate, or replace sensors and prism as needed. Clean pin hole on the cassette.	Adjust Menu, Printer, Label Feed tab	87533 (#100) 182039 (#14)		X	X	

Ishida UNI 9 DB Deli Seafood #3 Preventative Maintenance

	Section	Check Points	Comments	Tool/Grease/ Program	Replacement Parts	Check			✓
						D	6	Y	
3	PRINTER (CONT)	Peel sensor - Transmitter, Left Side (Printer Frame #101) Receiver, Right Side (Printer Frame #102)	Check that sensor readings are normal (over 200 when blocked and under 40 when open). Clean, calibrate, or replace sensors as needed.	Adjust Menu, Printer, Peel Sensor tab	158272 (#101) 158274 (#102)		X	X	
		Drive Gears - Gear Flat (Printer Frame #6) - Timing Pulley S2M (Printer Cassette #6) - Timing pulley, S2M, with gear (Printer Cassette #17) - - Pulley, idler (Printer Cassette #18) - - Torque limiter (Printer Cassette #23) - Timing belt, S2M (Printer Cassette #195)	Clean debris. Examine gears and belt for cracks or chips. Verify cassette holds and printer drive gears mesh well at home position		181151 (Frame #6) 175372 (Cassette #6) 175375 (#17) 181141 (#18) 181144 (#23) 181146 (#195)			X	
		Home position - Cassette Sensor (Main Body Frame #102) - Seal Sensor (Printer Cassette #31)	Clean and inspect the Seal and Sensor for wear.	Cloth. Isopropyl alcohol.	93235 (#31)			X	
		Take Spool - Bobbin Roll (Printer Cassette #24)	Clean and inspect.	Cloth. Isopropyl alcohol	162104 (#24)		X	X	

Ishida UNI 9 DB Deli Seafood #3 Preventative Maintenance

	Section	Check Points	Comments	Tool/Grease/ Program	Replacement Parts	Check			✓
						D	6	Y	
4	SCALE	Weighing	Correct weighing	1 lb. test weight		X	X	X	
		Check zero and calibration		30 lb. test weights			X	X	
		Shift test in all four		5 lb. test weight			X	X	
		Seal	Refer to local regulations	Lead or paper seal			X	X	
		Stainless Scale Platter - Platter (#1)	Replace if damaged.	Soap & Water (Daily)	171675 (#1)		X	X	
5	DATA BACKUP		Insert a blank USB stick of 8 gig of less into the access hatch on the upper left side. Create and name a backup location under "OUTPUT SELECT"	Setup Menu, File Save/Load, Scale >USB tab, Output Select, Exec, All Sel, Exec, Exec. Also possible with SLP-5.			X	X	
6	FIRMWARE	Main Firmware:	Load firmware on a blank USB stick of 8 gig or less. Insert into the access hatch on the upper left side. Reboot Afterwards.	Adjust Menu, Download, Main tab "USB>MAIN (PRG+IMG)", USB Memory Folder, select file, EXEC, EXEC.					
		Sub Apps:	Load both sub apps; reboot after each. Take a second backup once the firmware upgrades have been completed.	Adjust Menu, Download, Sub App tab, Printer, Exec, Exec. Reboot. Adjust Menu, Download, Sub App tab, FPGA, Exec, Exec. Reboot.					

Ishida UNI 9 DB Deli Seafood #3 Preventative Maintenance

15. ADJUSTMENTS, COMMENTS, PARTS REQUIRED, ETC.

Section	Inspection Items and Contents	Comments	Replacement Parts

16. SAMPLE LABELS

[SAMPLE LABELS]

Ishida UNI 9 DB Seafood #4 Preventative Maintenance Guide

	Section	Check Points	Comments	Tool/Grease/ Program	Replacement Parts	Check			✓
						D	6	Y	
1	SCREEN DISPLAY	Contrast - LCD Display (#103) - Display Control Bd (#104)	Verify brightness of the display. Replace Invertor or Display as needed.	Adjust Menu, Display Check	185546 (#103) 87519 (#104)		X	X	
		Touchscreen operation - Touch Panel (#102) - Sheet (#4)	Confirm accuracy. Calibrate or replace as needed.	Adjust Menu, Touch Screen	87529 (#102) 185539 (#4)		X	X	
		Touchscreen cleaning	Clean touchscreen display	Cloth		X	X	X	
2	KEYBOARD ASSEMBLY	Keyboard - Keyboard Assy (#105)	Confirm all keys function and show as dark squares	Adjust Menu, Key Check	87525 (#105)		X	X	
		Keyboard Transparent cover - Sheet (#4)	Clean keyboard cover. Replace as needed.	Cloth	185539 (#4)	X	X	X	
3	PRINTER	Printing Quality - Print Head (Printer Unit: #102)	Verify print is complete and legible. Clean print head.	Adjust Menu, Printer, Head tab, Test Print: Checker. Cloth. Isopropyl alcohol.	158271 (#102)		X	X	
		Label Feeding - Print Roller (Printer Cassette #5)	Check if printing expands or contracts. Check and clean print roller. Check for cuts. Remove paper dust.	Cloth. Isopropyl alcohol. Vacuum.	163028 (#5)		X	X	
		Label Gap Sensor - Photo interrupter, reflection Printer Frame (Printer Frame #100) - Block B, Prism (Printer Cassette #14)	Check that sensor readings are normal (baseline near 60, spike near 160). Clean, calibrate, or replace sensors and prism as needed. Clean pin hole on the cassette.	Adjust Menu, Printer, Label Feed tab	87533 (#100) 182039 (#14)		X	X	

Ishida UNI 9 DB Seafood #4 Preventative Maintenance Guide

	Section	Check Points	Comments	Tool/Grease/ Program	Replacement Parts	Check			✓
						D	6	Y	
3	PRINTER (CONT)	Peel sensor - Transmitter, Left Side (Printer Frame #101) Receiver, Right Side (Printer Frame #102)	Check that sensor readings are normal (over 200 when blocked and under 40 when open). Clean, calibrate, or replace sensors as needed.	Adjust Menu, Printer, Peel Sensor tab	158272 (#101) 158274 (#102)		X	X	
		Drive Gears - Gear Flat (Printer Frame #6) - Timing Pulley S2M (Printer Cassette #6) - Timing pulley, S2M, with gear (Printer Cassette #17) - - Pulley, idler (Printer Cassette #18) - - Torque limiter (Printer Cassette #23) - Timing belt, S2M (Printer Cassette #195)	Clean debris. Examine gears and belt for cracks or chips. Verify cassette holds and printer drive gears mesh well at home position		181151 (Frame #6) 175372 (Cassette #6) 175375 (#17) 181141 (#18) 181144 (#23) 181146 (#195)			X	
		Home position - Cassette Sensor (Main Body Frame #102) - Seal Sensor (Printer Cassette #31)	Clean and inspect the Seal and Sensor for wear.	Cloth. Isopropyl alcohol.	93235 (#31)			X	
		Take Spool - Bobbin Roll (Printer Cassette #24)	Clean and inspect.	Cloth. Isopropyl alcohol	162104 (#24)		X	X	

Ishida UNI 9 DB Seafood #4 Preventative Maintenance Guide

	Section	Check Points	Comments	Tool/Grease/ Program	Replacement Parts	Check			✓
						D	6	Y	
4	SCALE	Weighing	Correct weighing	1 lb. test weight		X	X	X	
		Check zero and calibration		30 lb. test weights			X	X	
		Shift test in all four		5 lb. test weight			X	X	
		Seal	Refer to local regulations	Lead or paper seal			X	X	
		Stainless Scale Platter - Platter (#1)	Replace if damaged.	Soap & Water (Daily)	171675 (#1)		X	X	
5	DATA BACKUP		Insert a blank USB stick of 8 gig of less into the access hatch on the upper left side. Create and name a backup location under "OUTPUT SELECT"	Setup Menu, File Save/Load, Scale >USB tab, Output Select, Exec, All Sel, Exec, Exec. Also possible with SLP-5.					
6	FIRMWARE	Main Firmware:	Load firmware on a blank USB stick of 8 gig or less. Insert into the access hatch on the upper left side. Reboot Afterwards.	Adjust Menu, Download, Main tab "USB>MAIN (PRG+IMG)", USB Memory Folder, select file, EXEC, EXEC.					
		Sub Apps:	Load both sub apps; reboot after each. Take a second backup once the firmware upgrades have been completed.	Adjust Menu, Download, Sub App tab, Printer, Exec, Exec. Reboot. Adjust Menu, Download, Sub App tab, FPGA, Exec, Exec. Reboot.					

Ishida UNI 9 DB Seafood #4 Preventative Maintenance Guide

7. ADJUSTMENTS, COMMENTS, PARTS REQUIRED, ETC.

Section	Inspection Items and Contents	Comments	Replacement Parts

8. SAMPLE LABELS

[SAMPLE LABELS]

Ishida UNI 9 XL Hand Wrap Preventative Maintenance Guide

	Section	Check Points	Comments	Tool/Grease/ Program	Replacement Parts	Check			✓
						D	6	Y	
1	SCREEN DISPLAY	Contrast - LCD Display (#103) - Display Control Bd (#104)	Verify brightness of the display. Replace Invertor or Display as needed.	Adjust Menu, Display Check	185546 (#103) 87519 (#104)		X	X	
		Touchscreen operation - Touch Panel (#102) - Sheet (#4)	Confirm accuracy. Calibrate or replace as needed.	Adjust Menu, Touch Screen	87529 (#102) 185539 (#4)		X	X	
		Touchscreen cleaning	Clean touchscreen display	Cloth		X	X	X	
2	KEYBOARD ASSEMBLY	Keyboard - Keyboard Assy (#105)	Confirm all keys function and show as dark squares	Adjust Menu, Key Check	87525 (#105)		X	X	
		Keyboard Transparent cover - Sheet (#4)	Clean keyboard cover. Replace as needed.	Cloth	185539 (#4)	X	X	X	
3	PRINTER	Printing Quality - Print Head (Printer Unit: #102)	Verify print is complete and legible. Clean print head.	Adjust Menu, Printer, Head tab, Test Print: Checker. Cloth. Isopropyl	158271 (#102)		X	X	
		Label Feeding - Print Roller (Printer Cassette #5)	Check if printing expands or contracts. Check and clean print roller. Check for cuts. Remove paper dust.	Cloth. Isopropyl alcohol. Vacuum.	163028 (#5)		X	X	
		Label Gap Sensor - Photo interrupter, reflection Printer Frame (Printer Frame #100) - Block B, Prism (Printer Cassette #14)	Check that sensor readings are normal (baseline near 60, spike near 160). Clean, calibrate, or replace sensors and prism as needed. Clean pin hole on the cassette.	Adjust Menu, Printer, Label Feed tab	87533 (#100) 182039 (#14)		X	X	

Ishida UNI 9 XL Hand Wrap Preventative Maintenance Guide

	Section	Check Points	Comments	Tool/Grease/ Program	Replacement Parts	Check			✓
						D	6	Y	
3	PRINTER (CONT)	Peel sensor - Transmitter, Left Side (Printer Frame #101) Receiver, Right Side (Printer Frame #102)	Check that sensor readings are normal (over 200 when blocked and under 40 when open). Clean, calibrate, or replace sensors as needed.	Adjust Menu, Printer, Peel Sensor tab	158272 (#101) 158274 (#102)		X	X	
		Drive Gears - Gear Flat (Printer Frame #6) - Timing Pulley S2M (Printer Cassette #6) - Timing pulley, S2M, with gear (Printer Cassette #17) - - Pulley, idler (Printer Cassette #18) - - Torque limiter (Printer Cassette #23) - Timing belt, S2M (Printer Cassette #195)	Clean debris. Examine gears and belt for cracks or chips. Verify cassette holds and printer drive gears mesh well at home position		181151 (Frame #6) 175372 (Cassette #6) 175375 (#17) 181141 (#18) 181144 (#23) 181146 (#195)			X	
		Home position - Cassette Sensor (Main Body Frame #102) - Seal Sensor (Printer Cassette #31)	Clean and inspect the Seal and Sensor for wear.	Cloth. Isopropyl alcohol.	93235 (#31)			X	
		Take Spool - Bobbin Roll (Printer Cassette #24)	Clean and inspect.	Cloth. Isopropyl alcohol	162104 (#24)		X	X	

Ishida UNI 9 XL Hand Wrap Preventative Maintenance Guide

	Section	Check Points	Comments	Tool/Grease/ Program	Replacement Parts	Check			✓
						D	6	Y	
4	SCALE	Weighing	Correct weighing	1 lb. test weight		X	X	X	
		Check zero and calibration		60 lb. test weights			X	X	
		Shift test in all four		5 lb. test weight			X	X	
		Seal	Refer to local regulations	Lead or paper seal			X	X	
		Stainless Scale Platter - Platter (#1)	Replace if damaged.	Soap & Water (Daily)	171675 (#1)		X	X	
5	DATA BACKUP		Insert a blank USB stick of 8 gig or less into the access hatch on the upper left side. Create and name a backup location under "OUTPUT SELECT"	Setup Menu, File Save/Load, Scale >USB tab, Output Select, Exec, All Sel, Exec, Exec. Also possible with SLP-5.					
6	FIRMWARE	Main Firmware:	Load firmware on a blank USB stick of 8 gig or less. Insert into the access hatch on the upper left side. Reboot Afterwards.	Adjust Menu, Download, Main tab "USB>MAIN (PRG+IMG)", USB Memory Folder, select file, EXEC, EXEC.					
		Sub Apps:	Load both sub apps; reboot after each. Take a second backup once the firmware upgrades have been completed.	Adjust Menu, Download, Sub App tab, Printer, Exec, Exec. Reboot. Adjust Menu, Download, Sub App tab, FPGA, Exec, Exec. Reboot.					

Ishida UNI 9 XL Hand Wrap Preventative Maintenance Guide

Section	Check Points	Comments	Tool/Grease/ Program	Replacement Parts	Check		✓	
					D	Y		
SUPPLEMENTAL: HAND WRAP STATION	Sealing pad - Element (not pictured) - Teflon Cover 6"x15" (not pictured) - Thermostat (not pictured) - Circuit Control Board (not pictured)	Sealing pad is in working order. Responds to thermostat adjustments. Teflon cover is in place and not torn or worn. Replace if needed.		72927 (element) 53866 (cover) 72936 (thermostat) 172928 (board)		X	X	
	Film Cut Rods - Cut Off Rod 20-3/4" (not pictured)	Cut rods should be in good working order.		72929 (cut rod)		X	X	
	Stability	Station should be level and stable; adjust legs if needed.				X	X	
	Film Roll - Film Core Axle (not pictured) - Core Adaptor set (not pictured)	Film rolls should spin freely on axle. Axle should not be bent or damaged. Core adaptors plastic threads should not be damaged.		86003 (axle) 86002 (core set)		X	X	

Ishida UNI 9 XL Hand Wrap Preventative Maintenance Guide

7. ADJUSTMENTS, COMMENTS, PARTS REQUIRED, ETC.

Section	Inspection Items and Contents	Comments	Replacement Parts

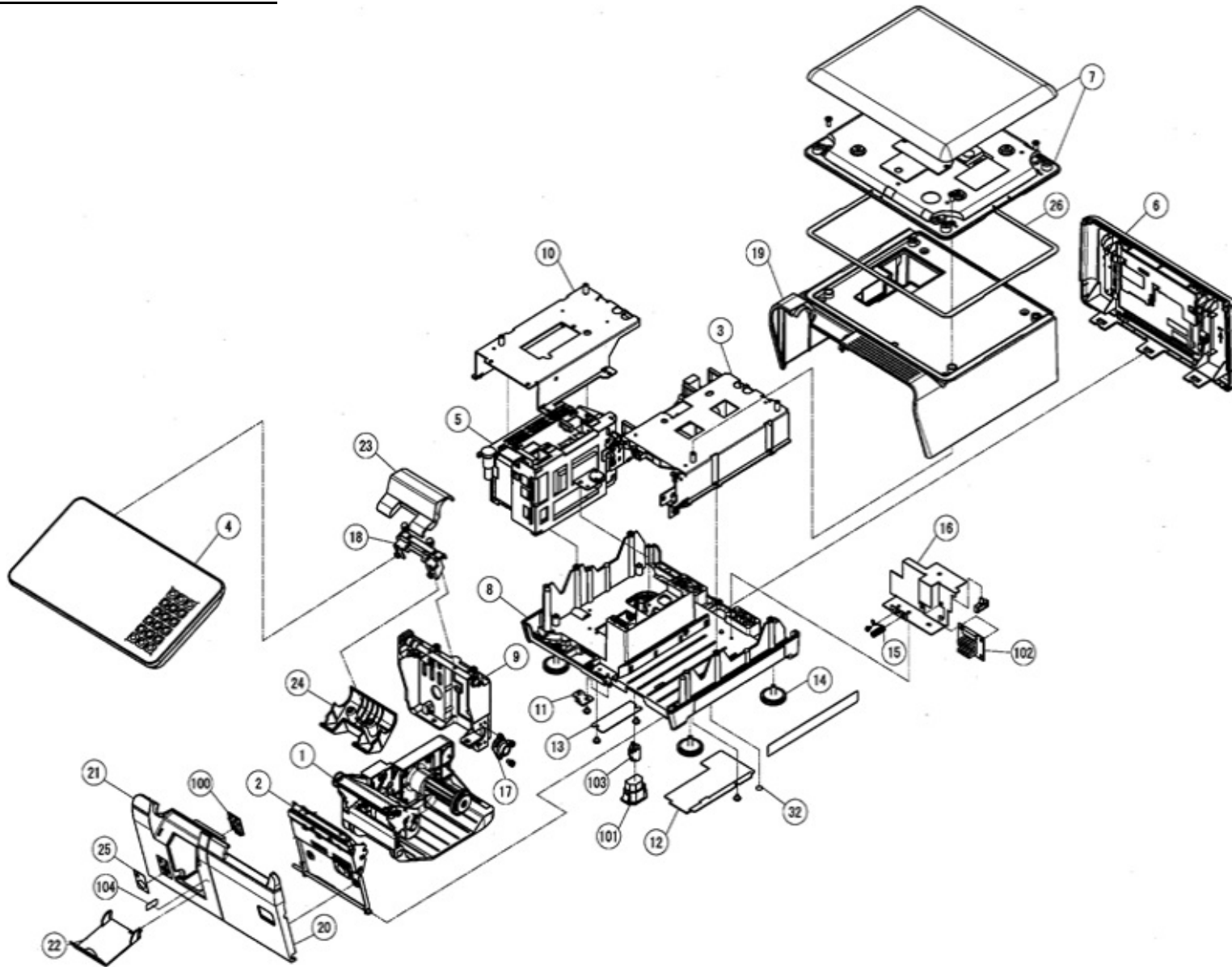
8. SAMPLE LABELS

[SAMPLE LABELS]

Ishida UNI 9 DB / XL Preventative Maintenance Guide

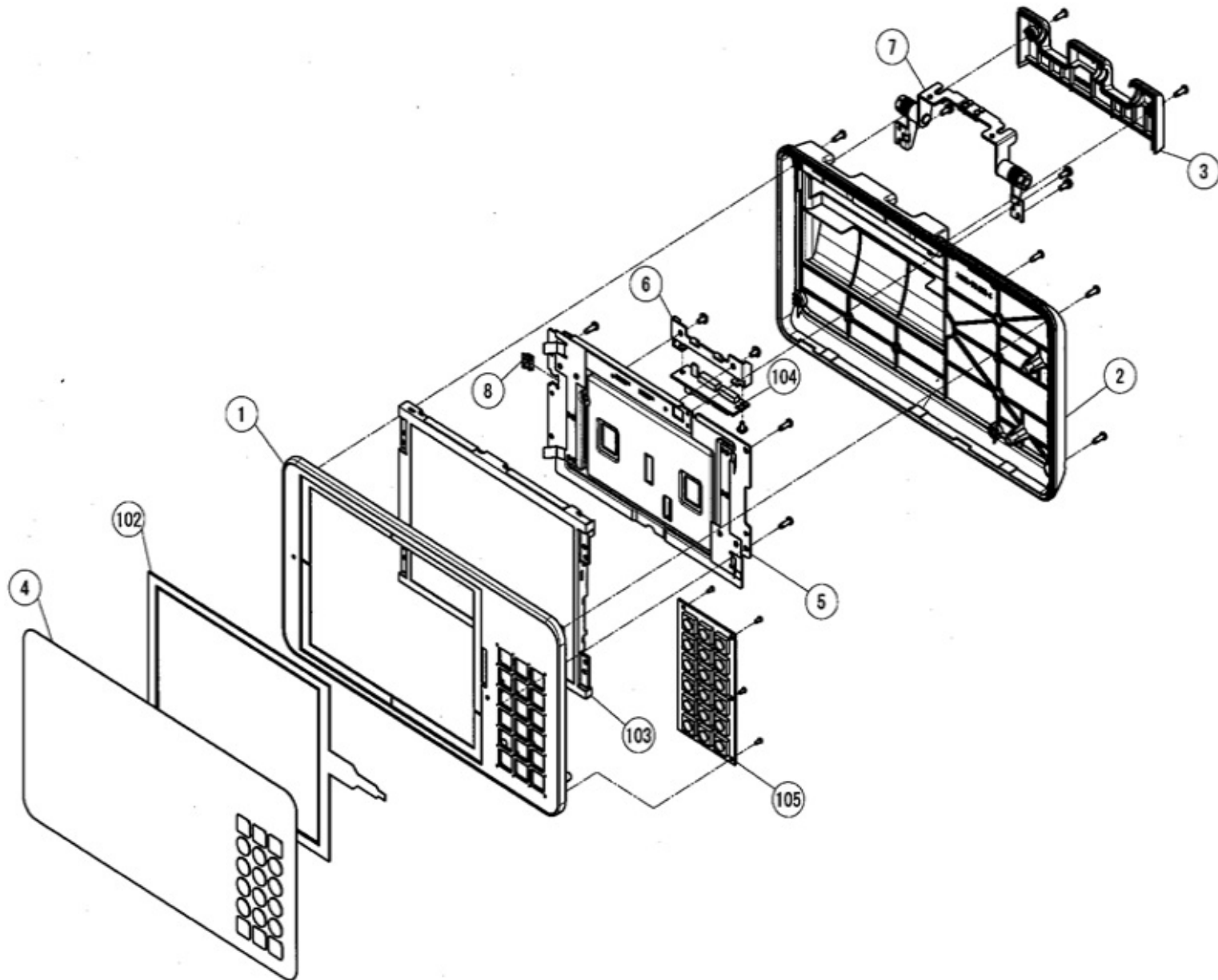
9. REFERENCE DRAWINGS

MAIN BODY FRAME OVERVIEW



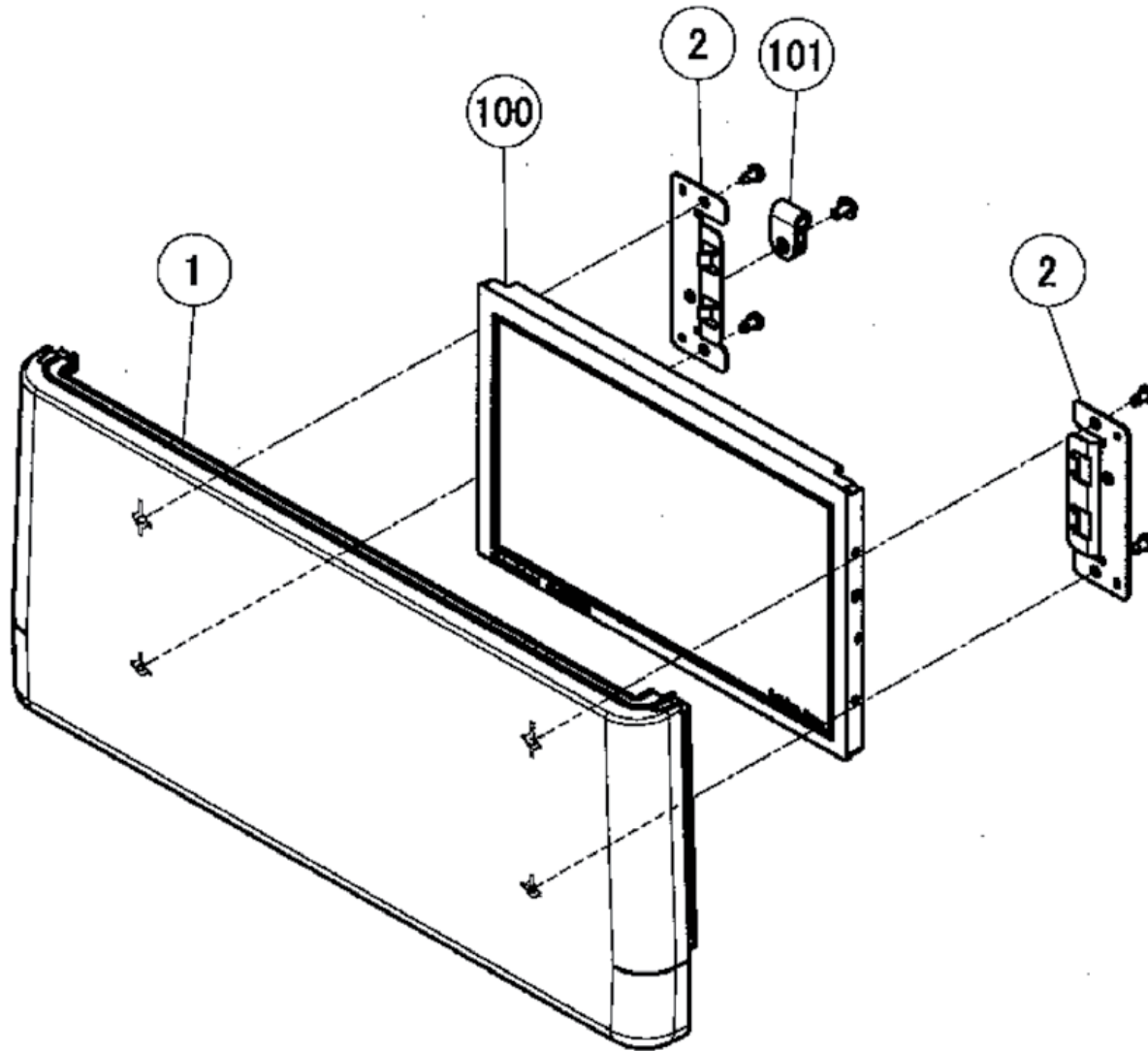
Ishida UNI 9 DB / XL Preventative Maintenance Guide

SCREEN DISPLAY: FRONT W/ KEYBOARD(Section 1 and 2)



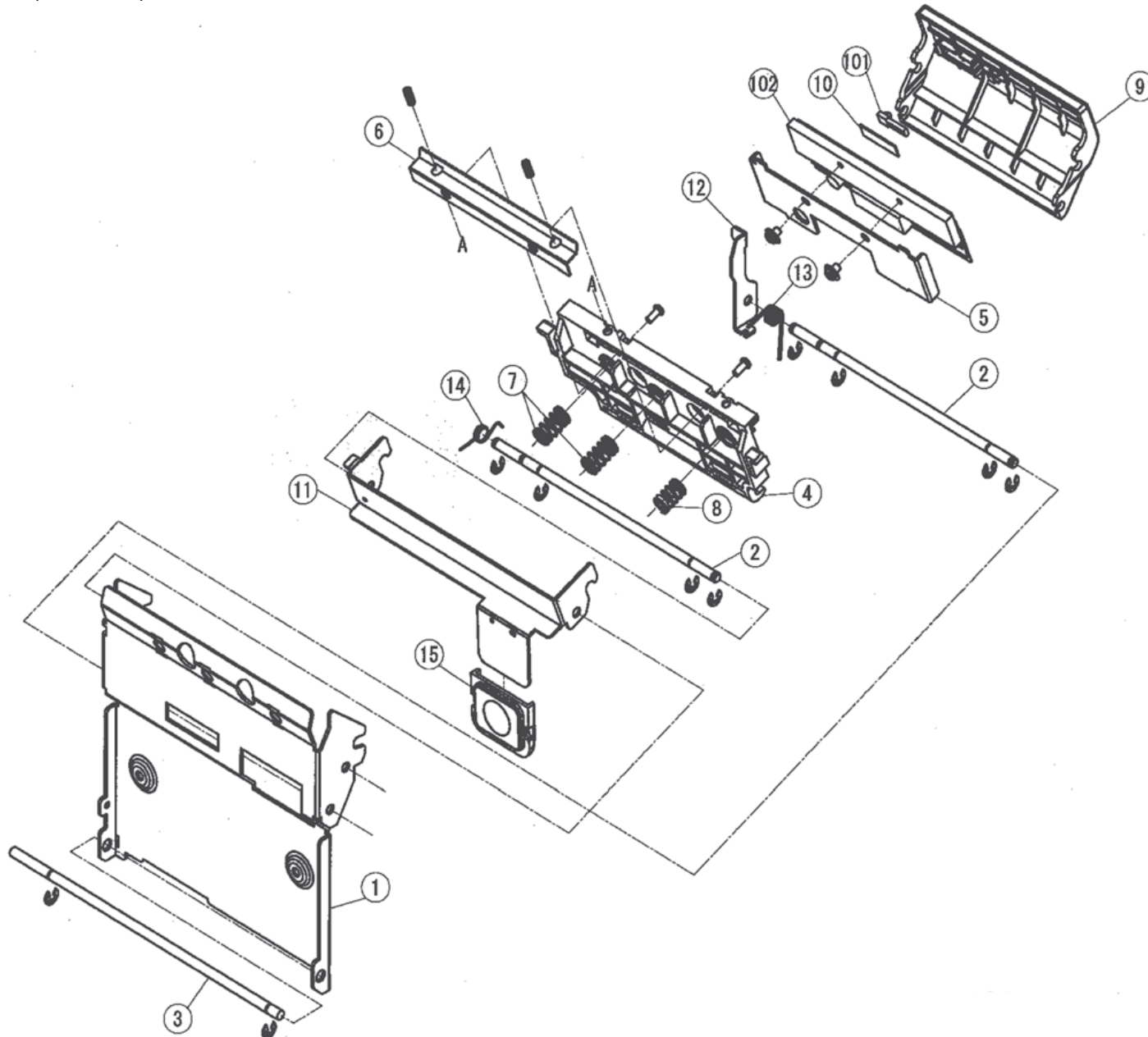
Ishida UNI 9 DB / XL Preventative Maintenance Guide

SCREEN DISPLAY: REAR (Section 1)



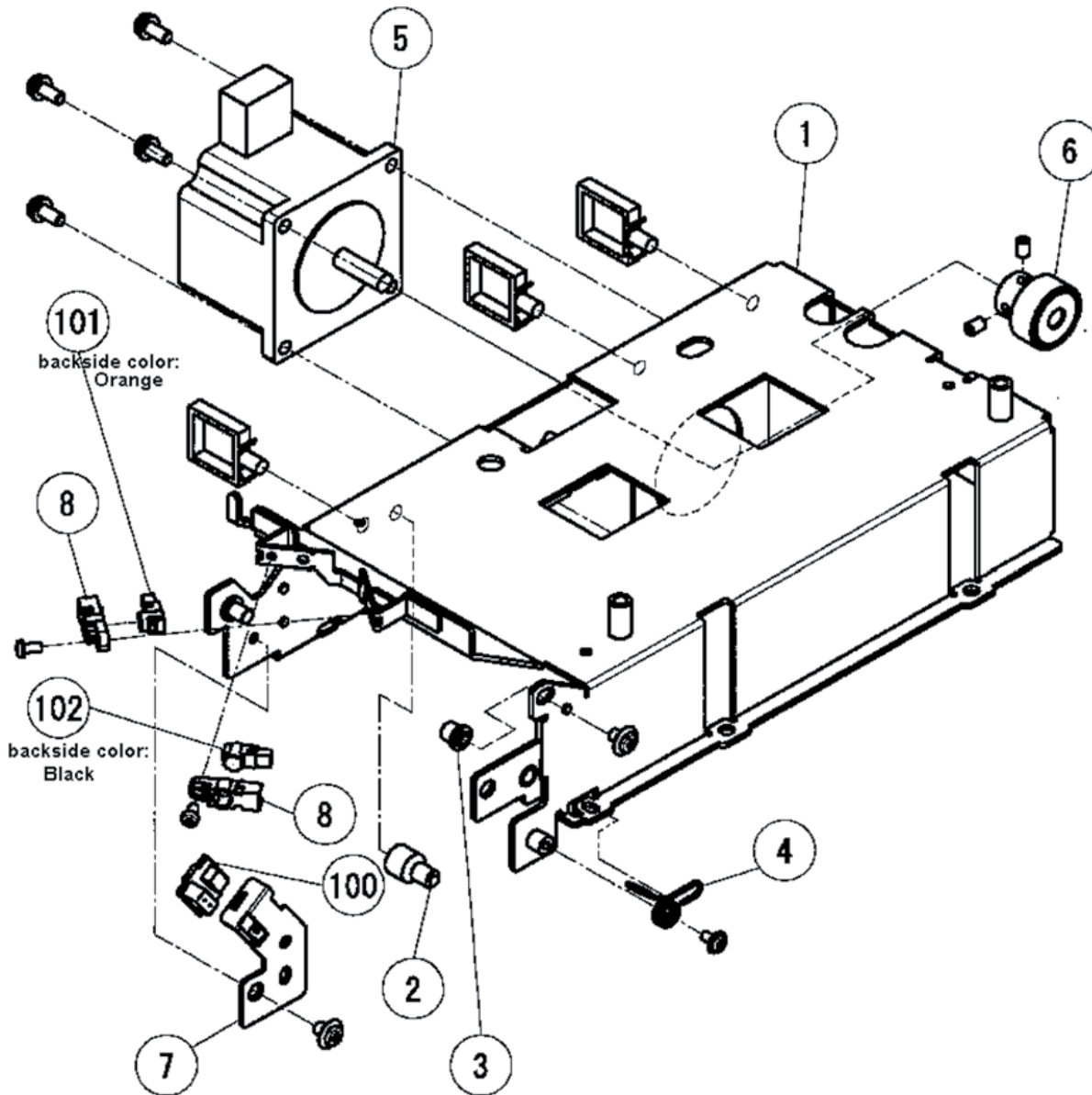
Ishida UNI 9 DB / XL Preventative Maintenance Guide

PRINTER UNIT (Section 3)



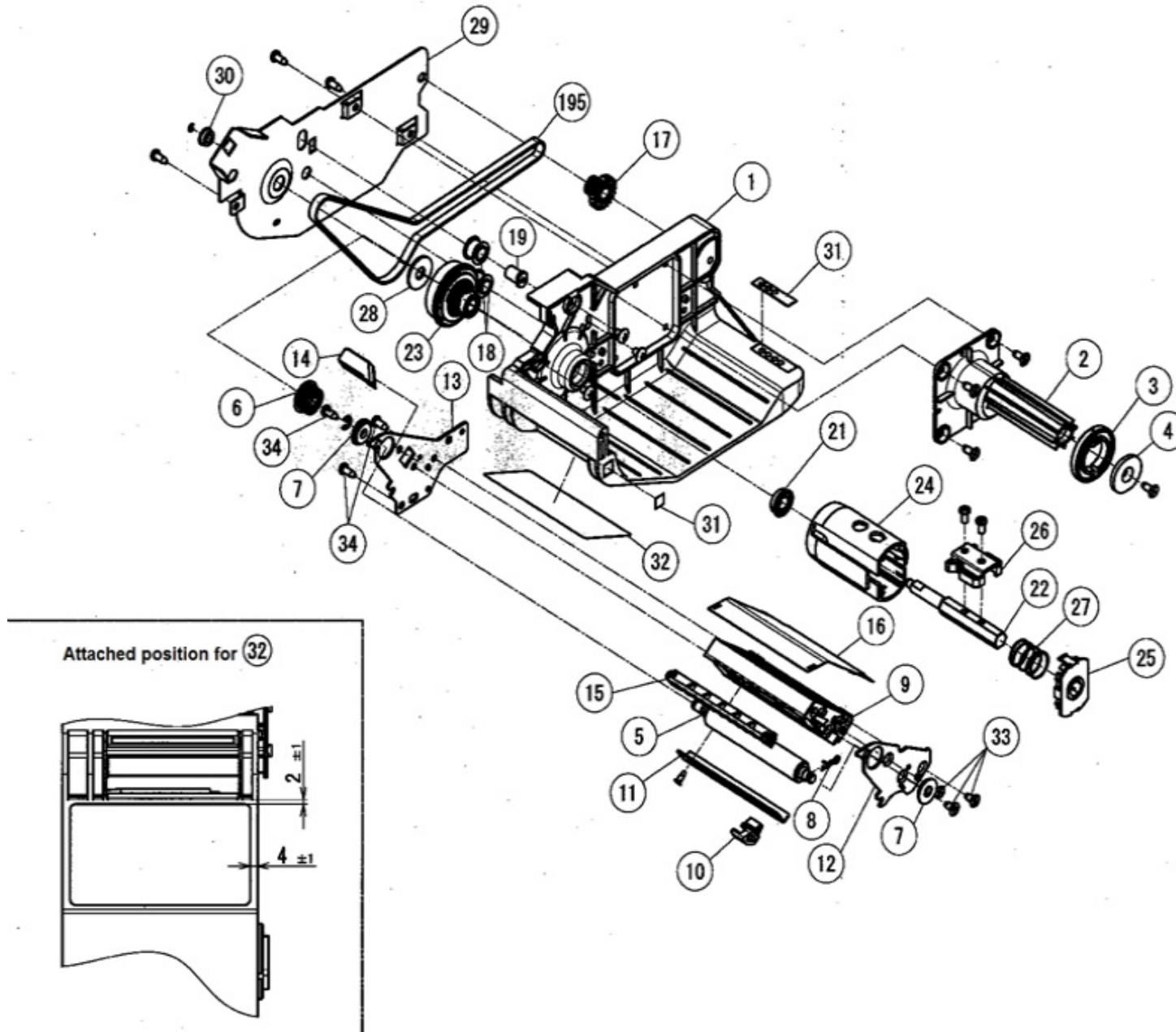
Ishida UNI 9 DB / XL Preventative Maintenance Guide

PRINTER FRAME (Section 3)



Ishida UNI 9 DB / XL Preventative Maintenance Guide

PRINTER CASSETTE (Section 3)



Ishida UNI 9 DB / XL Preventative Maintenance Guide

SCALE (Section 4)

