

WHEELCHAIR SCALES



**SLIP RESISTANT
METAL SCALE TOP**

Model 350-10-3M



RICE LAKE[®]
WEIGHING SYSTEMS

800-472-6703
www.ricelake.com/health

Rice Lake's wheelchair scale selection features larger platforms to safely weigh a wide variety of patients. Models include 1,000-pound (450-kilogram) capacity, single and dual ramps, and optional seats. An in-floor version is also available. Motiontrap™ movement compensation technology adjusts for involuntary movement and keyboard tare efficiently reduces errors.

Portable Wheelchair Scales

Model RL-350 Series

Standard Features

- Capacity: 1,000lb x 0.2lb (450 kg x 0.1 kg)
- Anti-slip rubber surface on platform
- Integral handles and wheels for ease of portability
- Motiontrap™ (movement compensation technology)
- Large 1-inch LCD display
- Push-button or manual entry of tare weight
- BMI (body mass index) function
- Hold function
- Unit of measure toggle or locking
- EMR capable, USB
- Powered by 6 AA batteries (included)

Options

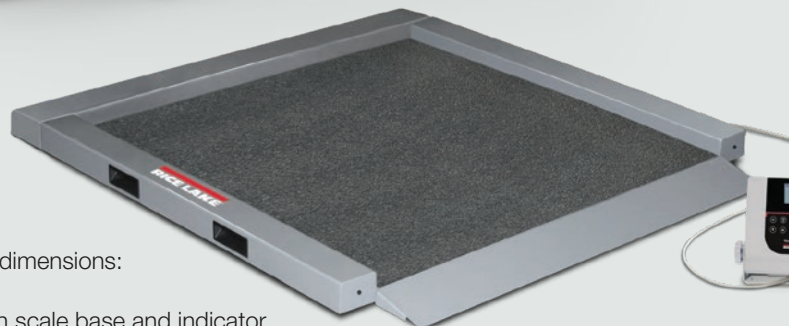
- AC adaptor
- Bluetooth® 2.0
- Bluetooth® BLE 4.0



350-10-3M

Dual-ramp Handrail

- Platform weighing dimensions: 29.5in x 32in
- Handrail for patient stability
- Folded depth 11.75in for storage



RL350-5

Single-ramp

- Platform weighing dimensions: 34 in x 34 in
- 10 ft cable between scale base and indicator

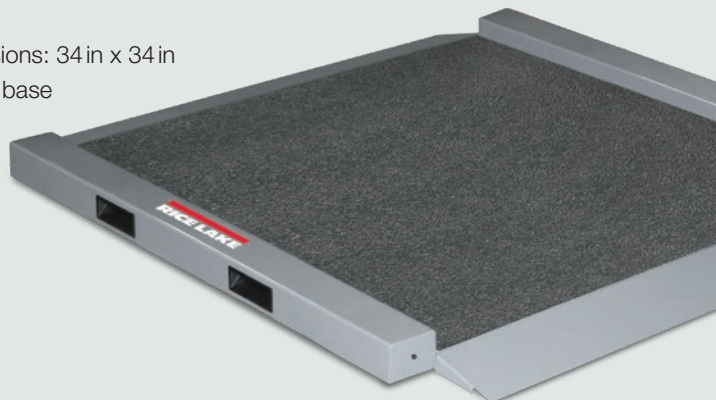


Indicator and cable secure to base for safer movement and storage.

RL350-6

Dual-ramp

- Platform weighing dimensions: 34 in x 34 in
- 10 ft cable between scale base and indicator



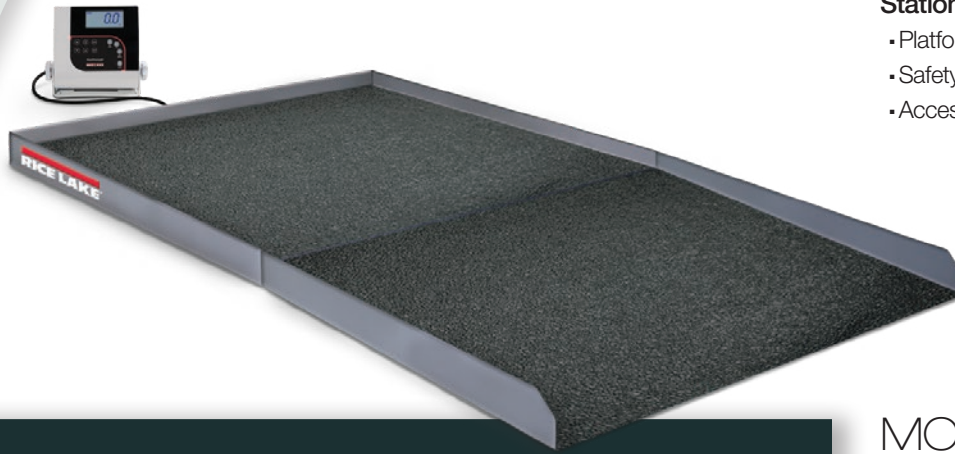
WHEELCHAIR SCALES

SLIP RESISTANT METAL SCALE TOP

SB-1150

Stationary, Single-ramp

- Platform weighing dimensions: 36 in x 36 in
- Safety guide rails on three sides of scale
- Access ramp 36 in x 28.5 in with safety rails



Summit Series Stationary Scales



MODEL 1150 SERIES

Standard Features

- Capacity: 1,000 lb x 0.2 lb (450 kg x 0.1 kg)
- Anti-slip rubber surface
- 10 ft cable from scale to indicator
- Motiontrap™ (movement compensation technology)
- Large 1-inch LCD display
- Push-button or manual entry of tare weight
- BMI (body mass index) function
- Hold function
- Unit of measure toggle or locking
- EMR capable, USB
- Powered by 6 AA batteries (included)

Options

- AC adaptor
- Bluetooth® 2.0
- Bluetooth® BLE 4.0

SD-1150-WP

Stationary, Pit-mounted Flush with the Floor

- Platform weighing dimensions: 36 in x 36 in
- Includes mild steel painted scale, pit frame and handrail
- 36 in x 30 in (H x L) handrail for patient stability



WHEELCHAIR SCALES

SLIP RESISTANT METAL SCALE TOP



Easy-to-Read Display

Each of Rice Lake's medical scales is equipped with a large, brightly lit indicator. The keys are strategically positioned on the overlay to aid operator ease while performing Body Mass Index (BMI) or tare entry. To transmit weight, height, and BMI data, the indicator comes equipped with a USB port or you have the option to upgrade to the optional Bluetooth and Bluetooth Low Energy (BLE) technologies.

The indicator can be powered by batteries or with an adapter, providing accurate weight information for both portable and stationary scales. The indicator is equipped with a battery life annunciator to help alert you when batteries need to be changed. When powered by batteries, the indicator will automatically dim the display back light, and you can adjust the auto-off feature to help extend battery life.

These indicators can also be configured to meet your specific needs, such as toggling the display between pounds and kilograms. You can also lock the display to measure in only pounds or kilograms at all times.



Custom scale sizes available

When the location or specific weighing application requires an unusual size, Rice Lake can design a custom scale to meet any need. Custom scales can be designed for portability or installed in-ground.

Custom sizes are available for the following models:

- RL350-5
- RL350-6
- SB-1150
- SD-1150-WP

SALES AND TECHNICAL ASSISTANCE

RICE LAKE
WEIGHING SYSTEMS

HEADQUARTERS
230 West Coleman Street
Rice Lake, Wisconsin 54868 - USA
Tel: (715) 234 9171 | Fax: (715) 234 6967
www.ricelake.com