

# Monorail Scales

---

**TABLE OF CONTENTS**

**MS200** ..... **776**  
*Portable Monorail Scale*

**MS202** ..... **777**  
*Permanent Monorail Scale*

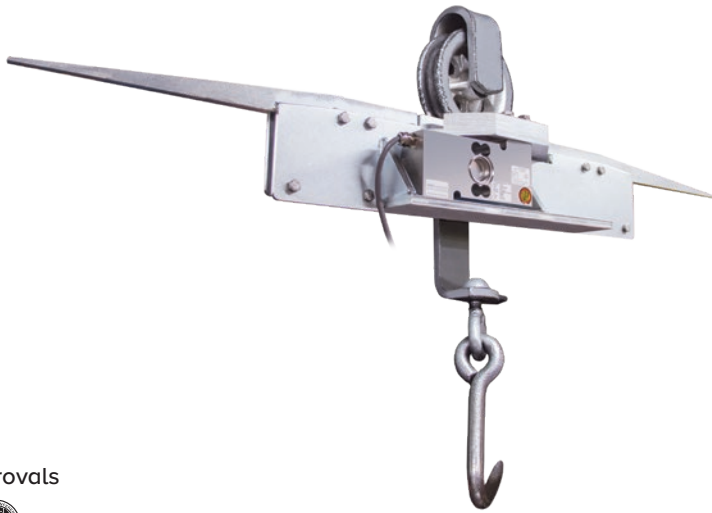
**MONORAIL SCALES**

*The following product names, logos, brands and other trademarks featured or referred to within this publication are the property of their respective trademark holders.*

# MS200

Portable Monorail Scale

MONORAIL SCALES



Approvals

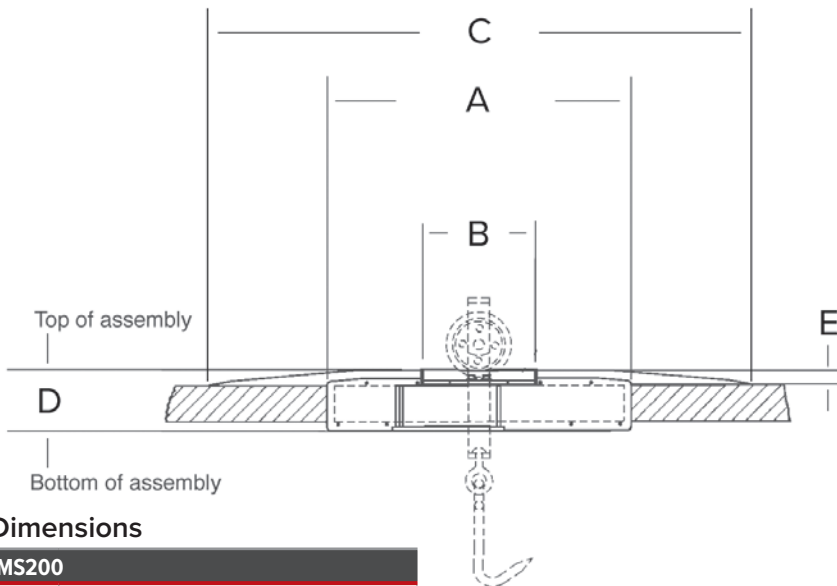


## Part Number/Price

Part #	Description	Est. Weight	Price
<b>MS200HB-3/8 Inch</b>			
19743	750 x 0.5 lb, nickel-plated	38 lb	\$2,400.00
<b>MS200HB-1/2 Inch</b>			
213006	1,500 x 0.5 lb, nickel-plated	40 lb	\$2,650.00
213007	1,500 x 0.5 lb, stainless steel	40 lb	\$2,950.00

## Options/Accessories

Part #	Description	Price
16984	Additional operating manual	\$5.00
167585	Replacement load cell, 500 kg 2 mV/V 350 ohm SST construction, with 25 ft of cable	\$842.00
216728	Configuration and Monorail calibration	\$250.00



## Dimensions

MS200	
A	21.00 in (533 mm)
B	8.00 in live rail (203 mm)
C	40.32 in (1,024 mm)
D	4.50 in (114 mm)
E	1.13 in (29 mm)

## Standard Features

- 8-inch live-rail designed to weigh one trolley
- 750 × 0.5 lb resolution; 3/8 in and 1/2 in rails
- 1,500 × 0.5 lb resolution; 1/2 in rails only
- Requires less than 41 in of straight rail to install
- 25 ft of load cell cable for flexible installation
- Slightly recessed live-rail for the trolley roller provides stable weighments

## Specifications

### Construction:

Electroless nickel plated steel construction, stainless steel hardware  
304 stainless steel construction, stainless steel hardware

### Load Cell Construction:

Stainless steel

### Bridge Resistance:

350 ohm nominal

### Rated Output:

2 mV/V

### Nonlinearity:

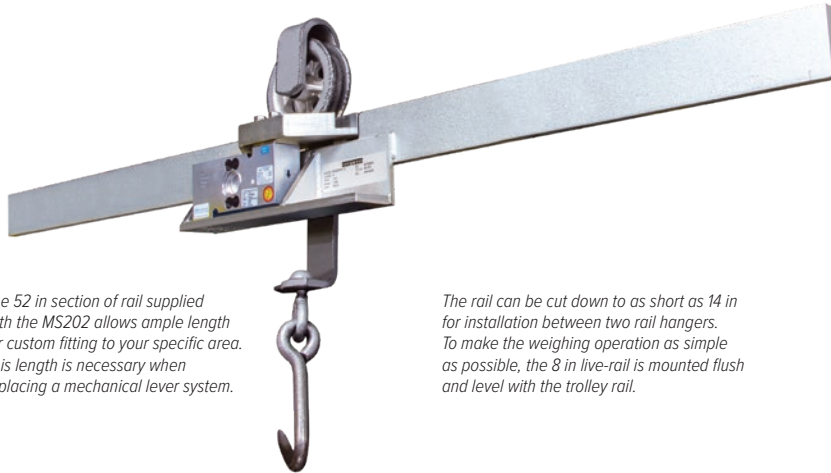
0.03% full scale

### Warranty:

One-year limited

### Approvals:

NTEP 90-003, Class III, 1,500 d



The 52 in section of rail supplied with the MS202 allows ample length for custom fitting to your specific area. This length is necessary when replacing a mechanical lever system.

The rail can be cut down to as short as 14 in for installation between two rail hangers. To make the weighing operation as simple as possible, the 8 in live-rail is mounted flush and level with the trolley rail.

### Standard Features

- 8-inch live-rail designed to weigh one trolley
- 750 × 0.5 lb resolution; 3/8 in rail
- 1,500 × 0.5 lb resolution; 1/2 in rail
- Requires less than 41 in of straight rail to install (14 in between rail hangers)
- High accuracy, stainless steel load cell
- 25 ft of load cell cable for flexible installation
- Slightly recessed live-rail for the trolley roller provides stable weighments

### Specifications

#### Construction:

Electroless nickel plated or 304 stainless steel construction

#### Load Cell Construction:

Stainless steel

#### Bridge Resistance:

350 ohms nominal

#### Rated Output:

2 mV/V

#### Nonlinearity:

0.03% full scale

#### Warranty:

One-year limited

#### Approvals:

NTEP 90-003, Class III, 1500 d  
Measurement Canada, AM-4849 (750 lb capacity only)

### Approvals



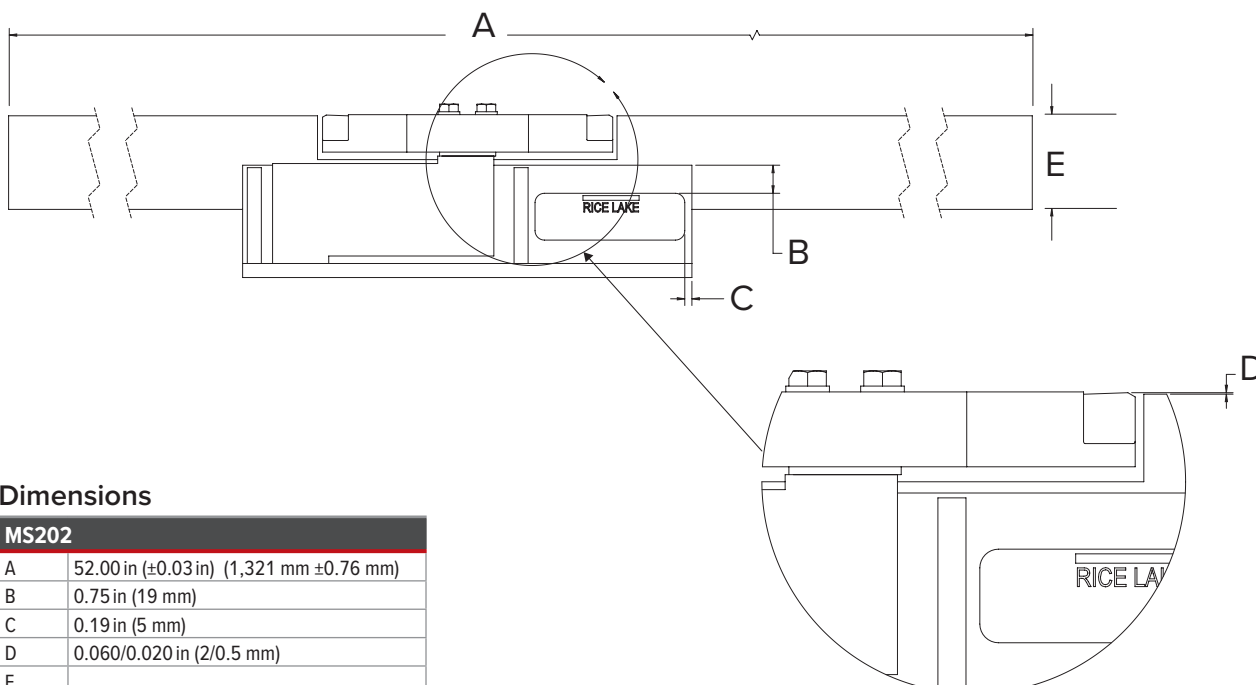
Measurement  
Canada  
Approved

### Part Number/Price

Part #	Description	Est. Weight	Price
<b>MS202HB-3/8 Inch</b>			
19744	MS202HB-3/8 in, 750 lb x 0.5 lb, nickel-plated	38 lb	\$2,600.00
196885	MS202HB-SS 3/8 in, 750 lb x 0.5 lb, stainless steel	38 lb	\$2,900.00
<b>MS202HB-1/2 Inch</b>			
19745	Electroless nickel plated rail	38 lb	\$2,350.00
196888	Stainless steel rail	38 lb	\$2,650.00

### Options/Accessories

Part #	Description	Price
16984	Additional operating manual	\$5.00
167585	Replacement load cell, 500 kg 2 mV/V 350 ohm stainless steel construction, with 25 ft of cable	\$842.00
216728	Configuration and Monorail calibration	\$250.00



### Dimensions

MS202	
A	52.00 in (±0.03 in) (1,321 mm ±0.76 mm)
B	0.75 in (19 mm)
C	0.19 in (5 mm)
D	0.060/0.020 in (2/0.5 mm)
E	

MONORAIL SCALES



MONORAIL SCALES