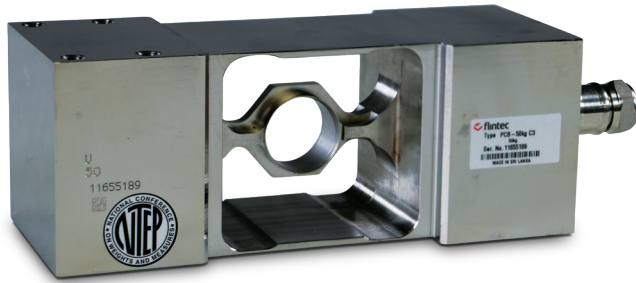


# PCB

Stainless Steel, Hermetically Sealed, NTEP Certified 1:5,000 Class III Single Cell, OIML C3, IP69K



Picture is a representation of actual product.

### Approvals

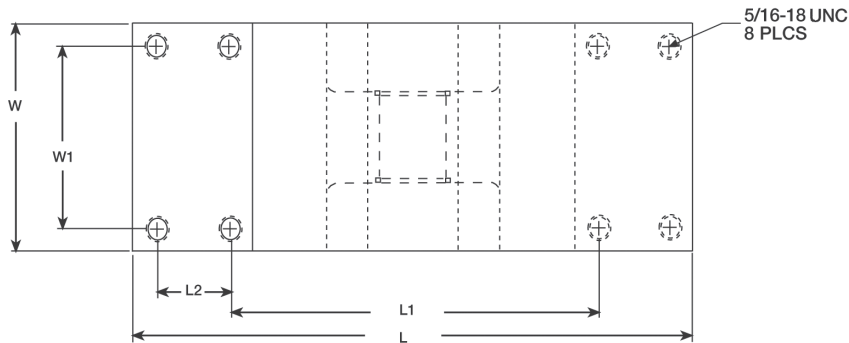
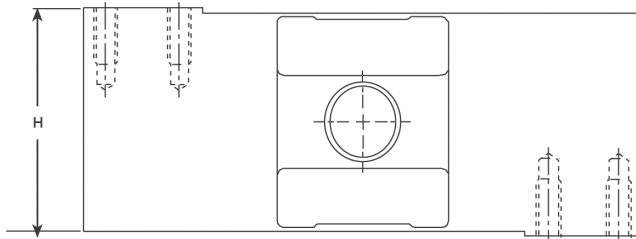


### Order Information

Load Rating	Part #	Est. Weight	Price
50 kg	45274	15 lb	Consult
100 kg	45275	15 lb	Consult
250 kg	45276	15 lb	Consult
500 kg	45277	15 lb	Consult
1,000 kg	45278	15 lb	Consult
Options			
Conduit adapter, 1/2-14 NPT	17703	1 lb	Consult

### Dimensions

Rated Capacity	L	L1	L2	W	W1	H
kg/mm						
50 to 1,000	190.5	124.8	24.9	74.9	59.9	74.9



### Interchangeable Products

RICE LAKE WEIGHING SYSTEMS  
**RLPWM12**.....page 161

RICE LAKE WEIGHING SYSTEMS  
**RL1250\***  
 VPG® TEDEA-HUNTLEIGH®  
**1250\*** ..... page 322

\* Environmentally sealed

### Specifications

#### Full Scale Output:

2.0 mV/V

#### Output Resistance:

960 (± 50) ohm

#### Input Resistance:

1,100 (± 50) ohm

#### Material/Finish:

Stainless steel

#### Temperature:

Compensated:

14 °F to 104 °F (-10 °C to 40 °C)

Operating:

0 °F to 150 °F (-18 °C to 65 °C)

#### Seal Type:

Hermetically sealed, IP69K

#### Safe Overload:

200% full scale

#### Safe Sideload:

100% full scale

#### Rated Excitation:

5 to 15 VDC

#### Combined Error:

0.02% full scale

#### Insulation Resistance:

5,000 megohm

#### Deflection at Capacity:

0.015 in

#### Cable Length:

10 ft

#### Cable Diameter:

0.196 in

Polyurethane jacket

#### Cable Color Code:

Green +Excitation

Black -Excitation

White +Signal

Red -Signal

Yellow Shield

#### Max Platform Size:

39 × 39 in

#### Warranty:

One-year limited

#### Approvals:

FM

NTEP

OIML