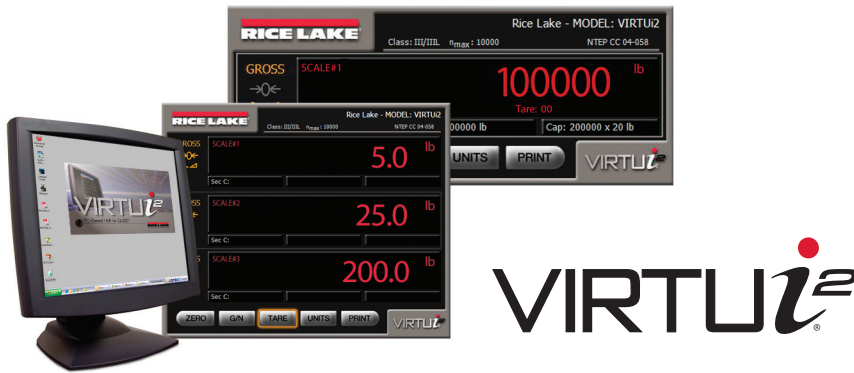


VIRTUi2®

PC-Based HMI for iQUBE2®



VIRTUi2®

SOFTWARE SYSTEMS

VIRTUi2 is a Windows®-based desktop application that works with iQUBE2 to replicate simple indicator functionality ideal for system integrators and OEMs wanting to provide a PC-based solution. Load cells are individually monitored and calibrated, making setup easy.

Approvals



Part Number/Price

Part #	Description	Price
108436	Activation part number - requires machine ID and customer's email address	Consult

Standard Features

- Virtual front panel consists of display and five-button keypad
- Web browser-based iQUBE2 cell status
- Provides local and remote reporting of diagnostics and error conditions
- Up to four scales and one total scale
- Primary/secondary units configuration (lb, kg, short tons, metric tons, none)
- RS-232 communications at up to 460 kbps
- Electronic Data Processing (EDP) port over RS-232 and TCP/IP
- Printer port for output-only, simplex communications
- Two print formats
- Provides iQUBE2 configuration screen and iQUBE2 digital I/O configuration
- Supports iQUBE2 diagnostics with configurable error viewing
- Peak weight history
- Recalibration notification
- Concentrated load capacity (CLC)
- Section capacity

Specifications

Minimum System Requirements:

Windows® 8.1 or newer

Serial Port:

USB to serial converter, or Ethernet TCP/IP for connection to iQUBE2

Additional serial ports are required for connections to printers/remote displays

Annunciators:

Units (lb, kg, short tons (tn), metric tons (t), NONE) gross/net, motion, center of zero

Approvals:

NTEP CC 04-058 Class III/IIIL, 10,000 d