

# Monorail Scales

---

## TABLE OF CONTENTS

**MS200** ..... **788**

*Portable Monorail Scale*

**MS202** ..... **790**

*Permanent Monorail Scale*

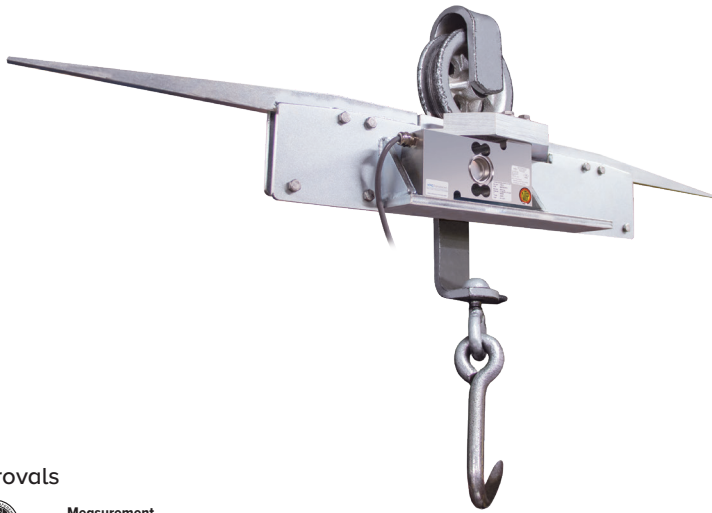
**MONORAIL SCALES**

*The following product names, logos, brands and other trademarks featured or referred to within this publication are the property of their respective trademark holders.*

# MS200

Portable Monorail Scale

MONORAIL SCALES



## Approvals



Measurement  
Canada  
Approved

## Part Number/Price

Part #	Description	Est. Weight	Price
<b>MS200HB for 3/8-in or 1/2-in Rails</b>			
<b>19743</b>	750 x 0.5 lb, nickel-plated	38 lb	\$2,650.00
<b>MS200HB for 1/2-in Rails</b>			
<b>213006</b>	1,500 x 0.5 lb, nickel-plated	40 lb	\$2,650.00
<b>213007</b>	1,500 x 0.5 lb, stainless steel	40 lb	\$2,950.00

## Options/Accessories

Part #	Description	Price
<b>16984</b>	Additional operating manual	\$5.00
<b>167585</b>	Replacement load cell for 750 lb cap monorail, model SPT 1510-500 kg, 20 ft cable	\$842.00
<b>87026</b>	Replacement load cell for 1,500 lb cap monorail, model RLPCBC-60, 1,000 kg, 10 ft cable	\$980.00
<b>216728</b>	Configuration and Monorail calibration	\$300.00

## Standard Features

- 8-in live-rail designed to weigh one trolley at a time
- 750 × 0.5 lb (3/8 in rail)
- 1500 × 0.5 lb (1/2 in rail)
- Available for rail sizes 3/8 × 2-1/2 in or 1/2 × 2-1/2 in
- Requires less than 41 in of straight rail to install (22 inch between tail hangers)
- Nickel-plated mild steel and stainless steel construction available
- High accuracy, stainless steel load cell
- 20 ft of cable on 750 lb capacity models
- 15 ft of cable on 1500 lb capacity models
- Slightly recessed live-rail for the trolley roller provides stable weighments

## Specifications

### Construction:

Nickel-plated mild steel or stainless steel construction, stainless steel hardware

### Load Cell Construction:

Stainless steel

### Bridge Resistance:

350 ohms nominal

### Rated Output:

2 mV/V

### Nonlinearity:

0.03% full scale

### Warranty:

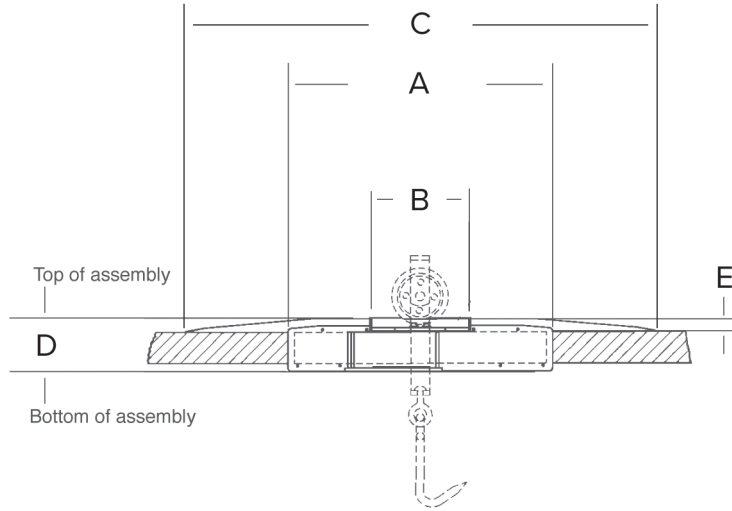
One-year limited

### Approvals:

NTEP CC 90-003 Class III, 3,400d (Max)

**Dimensions**

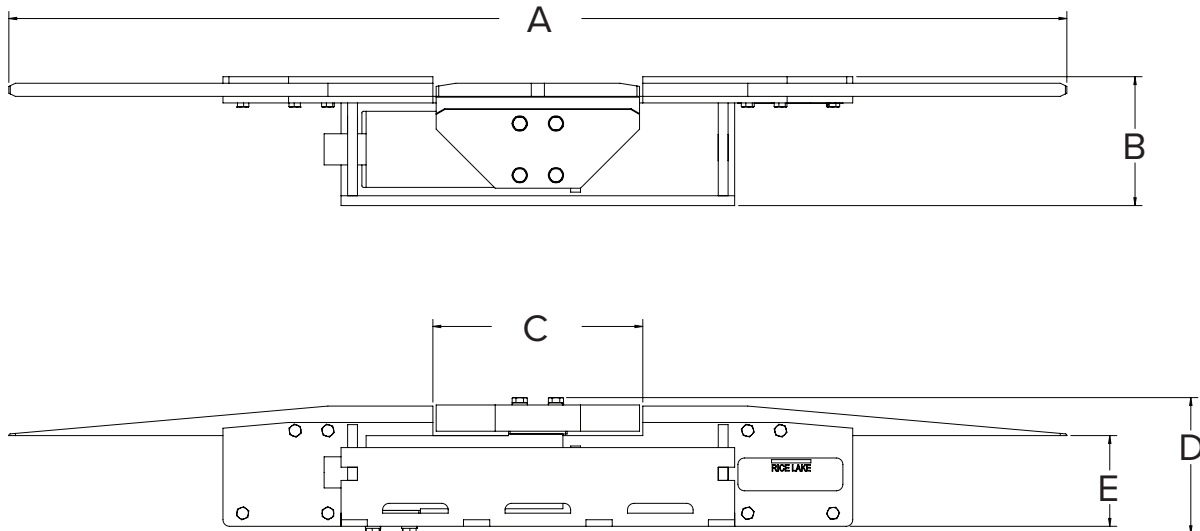
MS200	
750 lb Capacity	
A	21.00 in (533 mm)
B	8.00 in live rail (203 mm)
C	40.32 in (1,024 mm)
D	4.50 in (114 mm)
E	1.13 in (29 mm)



**MONORAIL SCALES**

**Dimensions**

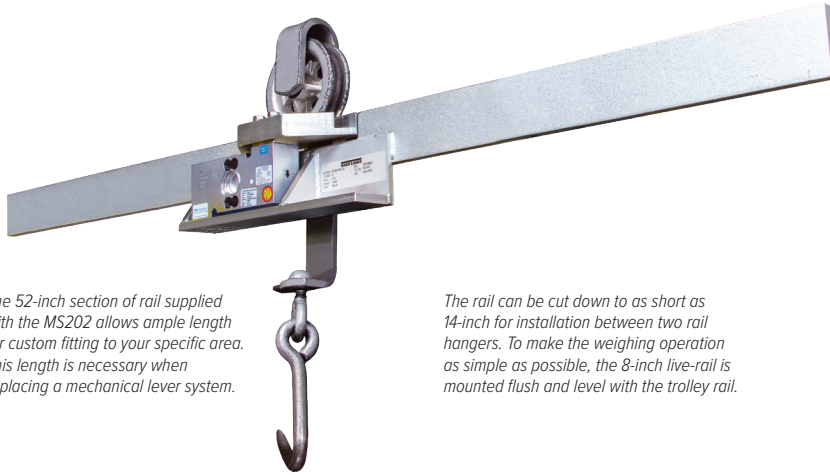
MS200	
1,500 lb Capacity	
A	40.32 in (1,024 mm)
B	4.90 in (125 mm)
C	8.00 in live rail (203 mm)
D	5.19 in (132 mm)
E	3.46 in (88 mm)



# MS202

## Permanent Monorail Scale

MONORAIL SCALES



The 52-inch section of rail supplied with the MS202 allows ample length for custom fitting to your specific area. This length is necessary when replacing a mechanical lever system.

The rail can be cut down to as short as 14-inch for installation between two rail hangers. To make the weighing operation as simple as possible, the 8-inch live-rail is mounted flush and level with the trolley rail.

### Approvals



Measurement  
Canada  
Approved

### Part Number/Price

Part #	Description	Est. Weight	Price
<b>MS202HB for 3/8-in Rails</b>			
19744	MS202HB-3/8 in, 750 lb x 0.5 lb, nickel-plated	38 lb	\$2,600.00
196885	MS202HB-SS 3/8 in, 750 lb x 0.5 lb, stainless steel	38 lb	\$2,900.00
<b>MS202HB for 1/2-in Rails</b>			
213003	MS202HB, 1500 lb x 0.5 lb, nickel-plated	40 lb	\$2,350.00
213004	MS202HB, 1500 lb x 0.5 lb, stainless steel	40 lb	\$2,650.00

### Options/Accessories

Part #	Description	Price
16984	Additional operating manual	\$5.00
167585	Replacement load cell for 750 lb cap monorail, model SPT 1510-500 kg, 20 ft cable	\$842.00
87026	Replacement load cell for 1,500 lb cap monorail, model RLPCBC-60, 1,000 kg, 10 ft cable	\$980.00
216728	Configuration and Monorail calibration	\$300.00

### Standard Features

- 8 in live-rail designed to weigh one trolley at a time
- 750 × 0.5 lb (3/8 in rail)
- 1500 × 0.5 lb (1/2 in rail)
- Available for rail sizes 3/8 × 2- 1/2 in or 1/2 × 2- 1/2 in
- Requires less than 41 in of straight rail to install (14 in between rail hangers)
- Nickel-plated mild steel and stainless steel construction available
- High accuracy, stainless steel load cell
- 20 ft of cable on 750 lb capacity models
- 15 ft of cable on 1500 lb capacity models
- Slightly recessed live-rail for the trolley roller provides stable weighments

### Specifications

#### Construction:

Nickel-plated mild steel or stainless steel construction

#### Load Cell Construction:

Stainless steel

#### Bridge Resistance:

350 ohms nominal

#### Rated Output:

2 mV/V

#### Nonlinearity:

0.03% full scale

#### Warranty:

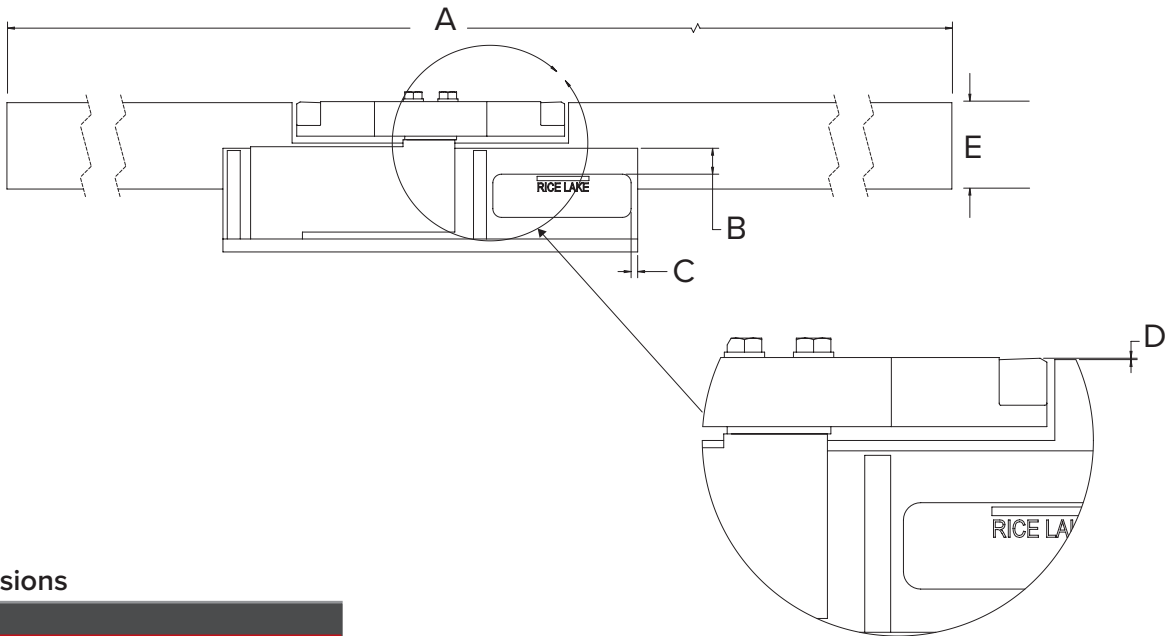
One-year limited

#### Approvals:

NTEP CC 90-003 Class III, 3,400d (Max)  
Measurement Canada (750 lb/375 kg only)

## Dimensions

MS202	
750 lb Capacity	
A	52.00 in (± 0.03 in) (1,321 mm ± 0.76 mm)
B	0.75 in (19 mm)
C	0.19 in (5 mm)
D	0.06/0.02 in (2/0.5 mm)
E	2.50 in (63.5 mm)



MONORAIL SCALES

## Dimensions

MS202	
1,500 lb Capacity	
A	52.00 in (± 0.03 in) (1,321 mm ± 0.76 mm)
B	4.66 in (118 mm)
C	8.00 in (203 mm)
D	4.59 in (117 mm)
E	2.50 in (64 mm)

