

# Counting Scales

---

## TABLE OF CONTENTS

<b>Rice Lake Counterpart®</b> .....	<b>334</b>
<i>Configurable Counting Indicator</i>	
<b>DIGI® S-YC Series</b> .....	<b>336</b>
<i>Remote Scale Base Platforms</i>	
<b>DIGI® DC-788 Series</b> .....	<b>337</b>
<i>Industrial Counting Scales</i>	
<b>DIGI® DC-782 Series</b> .....	<b>338</b>
<i>Portable Counting Scales</i>	
<b>DIGI® DMC-782 Series</b> .....	<b>338</b>
<i>Portable Coin Counting Scales</i>	
<b>A&amp;D® Weighing HC-i Series</b> .....	<b>339</b>
<i>Industrial Counting Scales</i>	
<b>A&amp;D® Weighing FC-i/Si Series</b> .....	<b>339</b>
<i>High Resolution Counting Scales</i>	
<b>OHAUS® Ranger™ Count 3000</b> .....	<b>340</b>
<i>Industrial Counting Scales</i>	

The following product names, logos, brands and other trademarks featured or referred to within this publication are the property of their respective trademark holders.

# Rice Lake Counterpart®

Configurable Counting Indicator



## Specifications

### Power Source:

Input: 100 to 240 VAC, 47/63 Hz, 5 watts  
U.S. power cord  
Output: 9 to 12 V, 1.5 A max

### Excitation Voltage:

5 VDC

### Analog Signal Input Range:

0 to 4.5 mV/V

### Analog Specifications:

Grad minimum: .3  $\mu$ V/grad  
Input sensitivity: 1.5  $\mu$ V/grad recommended  
Zero adjustment range: 0 to 100% or per region settings  
A/D conversion rate: 7.5, 15, 30 samples per second  
Load cells per scale: 8  $\times$  350 ohm; 16  $\times$  700 ohm  
Scale channels: 1 or 2  
Linearity:  $\pm$  0.017 full scale

### Circuit Protection:

RFI, EMI, ESD protection

### Digital I/O:

Four

### Display:

Viewing area: 240  $\times$  64 pixels, transmissive VGA liquid crystal display (LCD) with adjustable contrast

### Keys/Buttons:

24 buttons, full keypad (alpha numeric)

### Resolution:

Internal: 1,000,000 counts  
Display: up to 100,000

### Communications Ports:

Two RS-232 ports support up to 115,200 bps  
20 mA  
Ethernet port  
Setpoint output

### Annunciators:

PCS, motion, low battery, insuff, recomp, scale number, gross, net, zero

### Units of Measure:

lb, kg, g, oz

### Prints:

Standard EPL label format; format is changeable to work with virtually any printer

### Battery (optional):

Type: Lithium-ion  
Charge time: 6 to 8 hours  
Charge cycles: 400 to 1,200  
Estimated runtime: 24 to 32 hours with one 350 ohm load cell base

### Temperature:

Operating: 32 °F to 104 °F (0 °C to 40 °C)

### Humidity:

85%

### Dimensions:

(L  $\times$  W  $\times$  H)  
Indicator only  
12.25  $\times$  6.25  $\times$  4.00 in  
(311  $\times$  159  $\times$  102 mm)

### Warranty:

Two-year limited

### Approvals:

NTEP Certified CC 12-110  
CE Marked  
UL Listed  
Measurement Canada AM-5918C

## Approvals



## Standard Features

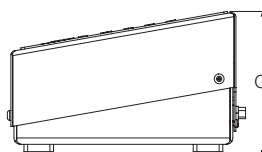
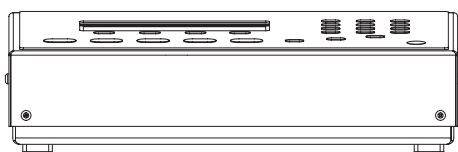
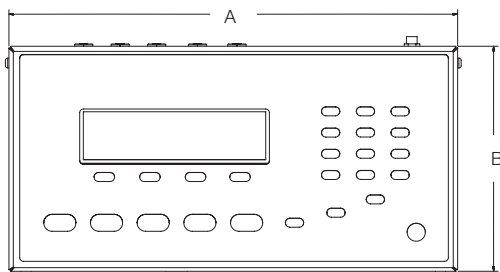
- AC operated (battery operation is optional)
- LCD graphic transmissive display for indoor viewing
- Single- or dual-channel models with serial scale input
- Mix and match platforms with console
- Four setpoint outputs for counting
- Two RS-232 ports for connecting peripherals
- Ethernet TCP/IP
- Scanner input (RS-232)
- PC software utility (Revolution®) for setup
- 150 item memory

## Options

- Wireless LAN
- Rechargeable battery
- USB connection for keyboard
- WeighVault™ software for ID entry, data registers and reports

## Dimensions

Rice Lake Counterpart			
A	12.30 in (312 mm)	C	3.94 in (100 mm)
B	6.17 in (157 mm)		



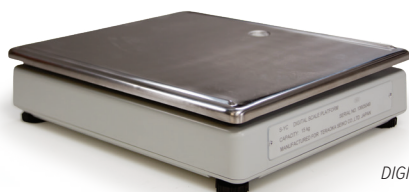
COUNTING SCALES

## Part Number/Price

Part #	Model #	Capacity	Platter Dimensions	Est. Weight	Price
118788	CP single-channel indicator	Console only	—	10 lb (4.5 kg)	\$1,050.00
120770	CP dual-channel indicator	Console only	—	10 lb (4.5 kg)	\$1,080.00
132429	CP single-channel, EU power cord	Console only	—	10 lb (4.5 kg)	\$1,050.00
132431	CP dual-channel, EU power cord	Console only	—	10 lb (4.5 kg)	\$1,080.00
<b>Single Channel with DIGI® S-YC base system and bracket</b>					
155089	CP-1	1 × 0.0001 lb (500 × 0.05 g)	7.9 × 5.6 in (200 × 142 mm)	35 lb (15.9 kg)	\$1,450.00
155090	CP-2	2 × 0.0002 lb (1 × 0.0001 kg)	9.6 × 6.9 in (244 × 175 mm)	35 lb (15.9 kg)	\$1,450.00
155092	CP-5	5 × 0.0005 lb (2.5 × 0.0002 kg)	13.4 × 11 in (341 × 284 mm)	35 lb (15.9 kg)	\$1,395.00
155094	CP-10	10 × 0.001 lb (5 × 0.0005 kg)	13.4 × 11 in (341 × 284 mm)	35 lb (15.9 kg)	\$1,395.00
155097	CP-25	25 × 0.002 lb (10 × 0.001 kg)	13.4 × 11 in (341 × 284 mm)	35 lb (15.9 kg)	\$1,395.00
155101	CP-50	50 × 0.005 lb (25 × 0.002 kg)	13.4 × 11 in (341 × 284 mm)	35 lb (15.9 kg)	\$1,395.00
<b>Dual Channel with DIGI S-YC base system and bracket (second channel available for use with other bases)</b>					
155115	CP-1	1 × 0.0001 lb (500 × 0.05 g)	7.9 × 5.6 in (200 × 142 mm)	35 lb (15.9 kg)	\$1,500.00
155116	CP-2	2 × 0.0002 lb (1 × 0.0001 kg)	9.6 × 6.9 in (244 × 175 mm)	35 lb (15.9 kg)	\$1,500.00
155117	CP-5	5 × 0.0005 lb (2.5 × 0.0002 kg)	13.4 × 11 in (341 × 284 mm)	35 lb (15.9 kg)	\$1,470.00
155118	CP-10	10 × 0.001 lb (5 × 0.0005 kg)	13.4 × 11 in (341 × 284 mm)	35 lb (15.9 kg)	\$1,470.00
155119	CP-25	25 × 0.002 lb (10 × 0.001 kg)	13.4 × 11 in (341 × 284 mm)	35 lb (15.9 kg)	\$1,470.00
155120	CP-50	50 × 0.005 lb (25 × 0.002 kg)	13.4 × 11 in (341 × 284 mm)	35 lb (15.9 kg)	\$1,470.00
<b>Dual Channel with BenchMark™ base system and bracket (second channel available for use with other bases)</b>					
125113	CP-50BM	50 × 0.01 lb (20 × 0.005 kg)	12 × 18 in (305 × 457 mm)	45 lb (20.4 kg)	\$1,525.00
125116	CP-100BM	100 × 0.02 lb (50 × 0.01 kg)	12 × 18 in (305 × 457 mm)	45 lb (20.4 kg)	\$1,525.00

## Options/Accessories

Part #	Description	Price
124692	Rechargeable lithium-ion battery option	\$310.00
53828	14-pin Y-cable, connects 2 remote DIGI bases	\$90.00
32375	Connector, 14-pin Amphenol load cell (can be soldered to home run cable)	\$21.00
125062	Ethernet quick access coverplate for Counterpart	\$21.00
130537	USB connection for USB keyboard only	\$160.00
179211	QWERTY keyboard, USB interface (requires 130537 USB interface option)	\$47.50
125079	Quick access 9-pin cover plate	\$10.50
120767	Quick access 14-pin Amphenol cover plate	\$15.75
125495	Wireless LAN card Wi-Fi 802.11 a/b, optional kit	\$600.00
125546	WeighVault™ software for Counterpart	\$265.00
118677	Operators manual (Part #129606 Spanish operator's manual)	\$26.50
121459	Front mount bracket for Rice Lake BenchMark™ scales, S-XL bases	\$53.00
154700	Front mount bracket for DIGI S-YC scales	\$53.00
121474	Firmware download cable	\$37.00
121501	Stand, angled free standing for tabletop	\$84.00
128063	Power supply, 12 V (power cord sold separately)	\$58.00
15438	Power cord	\$25.00
<b>Printers/Cables</b>		
167515	GoDEX DT2x printer, 2 in direct thermal, 203 dpi, real time clock 110/240 VAC	\$365.00
65617	Direct thermal label, (W × L): 2.25 × 4.5 in, 1 in core, 5 in OD perfed	\$17.50
41276	Cable DB9M to blunt end RS-232 cable for DT2	\$77.00
78860	Ethernet cross cable for direct connection to WeighVault™	\$40.00
<b>Scanner</b>		
225024	Kit, QuickScan QD2131 RS-232 scanner, cable stand and DB9 quick connect cable (supplies power to scanner, can reduce battery run time)	\$430.00



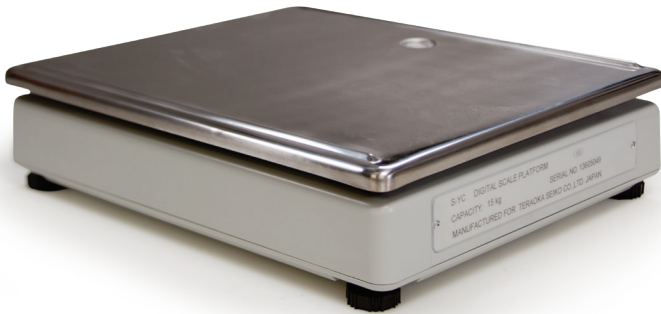
DIGI® Scale Base



Shown with BenchMark® Scale Base and Bracket

# DIGI® S-YC Series

Remote Scale Base Platforms



## Part Number/Price

Part #	Capacity	Est. Weight	Price
154835	500 g (1 lb)	7.7 lb (3.5 kg)	\$775.00
154836	1 kg (2 lb)	7.7 lb (3.5 kg)	\$775.00
154838	2.5 kg (5 lb)	11 lb (5 kg)	\$700.00
154839	5 kg (10 lb)	11 lb (5 kg)	\$700.00
154840	10 kg (20 lb)	11 lb (5 kg)	\$700.00
154841	25 kg (50 lb)	11 lb (5 kg)	\$700.00

## Standard Features

- Stainless steel platter
- ABS injection-molded plastic base
- Single-point strain gauge load cell
- Adjustable legs
- Leveling bubble
- 14-pin connector on three-meter cable

## Specifications

### Output Impedance:

350 ± 5 ohm

### Insulation Resistance:

> 500 megohm

### Rated Output:

1.0016 mV/V

### Load Cell Type:

K-Type DIGI cell

### Load Cell Cable Length:

118 in (3 m)

### Load Cell Color Code:

Green +Output  
Yellow -Output  
Black Shield  
White -Input  
Red +Input

### Temperature:

Operating:  
14 °F to 104 °F (-10 °C to 40 °C)

### Dimensions:

13.4 × 11.1 × 3.5 in  
(341 × 284 × 90 mm)

### Platter Dimensions:

500 g: 7.9 × 5.6 in (201 × 143 mm)  
1 kg: 9.6 × 6.9 in (244 × 177 mm)  
2.5 to 25 kg: 13.4 × 11.1 in (341 × 284 mm)

### Warranty:

Two-year limited



### Approvals



### Standard Features

- Auto-recomputing function
- Negative sampling and counting (count out of a full container)
- Bright green LED
- Simultaneous weight display, unit weight, tare and quantity
- Net/gross weight display
- Lb/kg weight display conversion
- Full-duplex RS-232 output to PC or printer
- AC or rechargeable battery operation (battery optional)
- Choice of unit weight per thousand or average piece weight
- Remote scale capability
- 100 product look up registers
- NTEP for non-counting applications
- Remote scale interface

### Specifications

#### Power:

AC: 115 VAC, 60 Hz  
Optional battery: 6 V, 5.0 Ah

#### Battery Operation:

24 hours of continuous usage

#### Internal Resolution:

1/1,000,000

#### Weight Display Resolution:

1/5,000 NTEP, other selections capacity dependent

#### Display:

LED  
Weight: Five-digit  
Unit weight: Five-digit  
Quantity: Seven-digit  
Tare: Five-digit

#### Charge Time:

8 to 10 hours

#### Zero Adjust Range:

± 127% full scale

#### Input Sensitivity:

0.4 to 4 mV/V

#### Load Cell Excitation:

5 VDC

#### Number of Scale Channels:

One local  
One remote

#### Memory Items:

100 items

#### Load Cell Input Connector:

Amphenol 14-Pin

#### Computer Interface:

RS-232 DB-9M connection

#### Temperature:

Operating:  
23 °F to 104 °F (-5 °C to 40 °C)

#### Dimensions:

(L × W × H)  
14.00 × 13.75 × 4.50 in  
(354 × 349 × 115 mm)

#### Platter Dimensions:

2 lb: 7 × 10 in (178 × 254 mm)  
10 to 100 lb: 10 × 13 in (254 × 330 mm)

#### Warranty:

Two-year limited

#### Approvals:

NTEP 07-015  
(10 to 100 lb) Class III for weigh mode only  
10 to 100 lb scales only

### Part Number/Price

Part #	Capacity	Weighing Resolution	Est. Weight	Price
88928 *	2 lb (1 kg)	0.0002 lb (0.0001 kg)	15 lb (7 kg)	\$875.00
88929	10 lb (5 kg)	0.002 lb (0.001 kg)	15 lb (7 kg)	\$875.00
88930	25 lb (10 kg)	0.005 lb (0.002 kg)	15 lb (7 kg)	\$875.00
88931	50 lb (25 kg)	0.01 lb (0.005 kg)	15 lb (7 kg)	\$875.00
88932	100 lb (50 kg)	0.02 lb (0.01 kg)	15 lb (7 kg)	\$1,095.00

\*Non-NTEP

### Options/Accessories

Part #	Description	Price
88933	Rechargeable battery—lead acid type	\$80.00
73386	Anti-static sample tray	\$26.00
32375	14-pin load cell connector, Amphenol (remote base, non-DIGI)	\$21.00
35319	14-pin load cell connector with 20 ft cable	\$72.00
91685	Additional operating and service manual	\$26.00
70056	Nine-pin printer cable to DT4, G500	\$40.00
72440	Nine-pin printer cable to Epson TM-U220/TM-U295 SP512	\$67.00
66535	Nine-pin cable to PC, null modem cable, to be used with Zebra printers	\$46.00
91214	AC adapter 110-230 VAC, U.S. plug	\$46.00
<b>DIGI S-YC Remote Scale Bases</b>		
154835	Base,S-YC 500g (1 lb) 7.9 x 5.6 in (201 x 143 mm) Platter, 3 m (118 in) Cable	\$775.00
154836	Base,S-YC 1 kg (2.5 lb) 9.6 x 6.9 in (244 x 177 mm) Platter, 3 m (118 in) Cable	\$775.00
154838	Base,S-YC 2.5 kg (5 lb) 13.4 x 11.1 in (341 x 284 mm) Platter, 3 m (118 in) Cable	\$700.00
154839	Base,S-YC 5kg (10 lb) 13.4 x 11.1 in (341 x 284 mm) Platter, 3 m (118 in) Cable	\$700.00
154840	Base,S-YC 10kg (25 lb) 13.4 x 11.1 in (341 x 284 mm) Platter, 3 m (118 in) Cable	\$700.00
154841	Base,S-YC 25kg (50 lb) 13.4 x 11.1 in (341 x 284 mm) Platter, 3 m (118 in) Cable	\$700.00
<b>Printers</b>		
212409	Zebra ZD421D, direct thermal printer.	\$699.00
212406	Zebra ZD421T, thermal transfer printer	\$745.00
132425	Godex G500, 4 in direct/thermal transfer, 110/240 VAC printer	\$615.00
65617	Label, 2.25 in × 4.5 in, direct thermal	\$17.50

# DIGI® DC-782 Series

Portable Counting Scales



## Standard Features

- LCD with yellow backlight
- 10 preset keys for product ID
- 25 item memory
- Buzzer - low, ok, high

## Specifications

**Power:**  
AC: 120 VAC power supply (U.S. power cord)  
Optional battery: Rechargeable

**Battery Operation:**  
Charge time: 12 to 14 hours  
Estimated runtime: 300 hours (no backlight)

**Internal Resolution:**  
1/500,000

**Weight Display Resolution:**  
1/7,500 or 1/6,000

**Display:**  
Liquid crystal display (LCD) with backlight  
Weight: five-digit  
Unit weight: five-digit  
Quantity: six-digit

**Number of Scale Channels:**  
One local

**Memory Items:**  
25

**Temperature:**  
Operating:  
14 °F to 104 °F (-10 °C to 40 °C)

**Dimensions:**  
(L × W × H)  
13.78 × 13.22 × 4.88 in  
(350 × 336 × 124 mm)

**Platter Size:**  
12.00 × 8.90 in  
(305 × 226 mm)

**Warranty:**  
Two-year limited

## Part Number/Price

Part #	Capacity	Est. Weight	Price
108248	6 × 0.001 lb (3 × 0.0005 kg)	11 lb (5 kg)	\$557.00
108249	15 × 0.002 lb (6 × 0.001 kg)	11 lb (5 kg)	\$557.00
108250	30 × 0.005 lb (15 × 0.002 kg)	11 lb (5 kg)	\$557.00
108251	60 × 0.01 lb (30 × 0.005 kg)	11 lb (5 kg)	\$557.00

## Options/Accessories

Part #	Description	Price
108516	Rechargeable battery	\$50.00
108518	AC adapter 110 - 230 VAC	\$50.00
109429	Manual	\$26.00
73296	Carrying case	\$205.00

# DIGI® DMC-782 Series

Portable Coin Counting Scales



## Standard Features

- Liquid crystal display (LCD) with yellow backlight
- 18 preset keys for product ID
- Programmable denomination unit weight and tare weight
- Accumulation
- Toggle display: count and money value
- Total amount calculation utilizing reverse counting

## Options

- Rechargeable battery
- Carrying case

## Specifications

**Power:**  
AC: 120 AC power supply  
Optional battery: rechargeable

**Battery Operation:**  
Charge time: 12 to 14 hours  
Battery life: 300 hours (no backlight)

**Internal Resolution:**  
1/500,000

**Weight Display Resolution:**  
1/7,500 or 1/6,000

**Display:**  
LCD with backlight  
Weight: five-digit  
Denomination: five-digit  
Quantity/Amount: six-digit

**Number of Scale Channels:**  
One local

**Memory Items:**  
18

**Temperature:**  
Operating:  
14 °F to 104 °F (-10 °C to 40 °C)

**Dimensions:**  
(L × W × H)  
13.7 × 13.2 × 4.8 in  
(350 × 336 × 124 mm)

**Platter Size:**  
(L × W)  
8.90 × 12.00 in  
(255 × 300 mm)

**Warranty:**  
Two-year limited

## Part Number/Price

Part #	Capacity	Est. Weight	Price
111317	6 × 0.001 lb (3 × 0.0005 kg)	11 lb (5 kg)	\$610.00
111318	15 × 0.002 lb (6 × 0.001 kg)	11 lb (5 kg)	\$610.00
111319	60 × 0.01 lb (30 × 0.005 kg)	11 lb (5 kg)	\$610.00

## Options/Accessories

Part #	Description	Price
15438	Power cord	\$25.00
111781	Manual	\$26.00
108516	Rechargeable battery	\$50.00
73296	Carrying case, hard shell with locking latches	\$205.00

# A&D® Weighing HC-i Series

Industrial Counting Scales



## Standard Features

- Sealed removable display unit
- Automatic Counting Accuracy Improvement (ACAI)
- Audible Weighing Assist beeping function (AWA)
- Display function - Hi/OK/Lo
- Accumulation function
- Full-digital calibration function
- Auto power-off function

## Options

- Rechargeable battery
- RS-232C

## Specifications

**Power Source:**  
AC adapter or optional SLA battery

**Internal Resolution:**  
HC-3 Ki, 6 Ki, 30 Ki: 1/600,000  
HC-15 Ki: 1/750,000

**Display:**  
Seven-segment LCD  
Character height: pcs 18.6 mm  
Unit weight: 11.4 mm

**Operating Time:**  
Approximately 80 hours without interface

**Number of Scale Channels:**  
One local

**Memory Items:**  
99 weight registers

**Temperature:**  
Operating:  
14 °F to 104 °F (-10 °C to 40 °C)

**Dimensions:**  
(L × W × H)  
12.40 × 13.00 × 5.00 in  
(315 × 331 × 126 mm)

**Platter Size:**  
11.8 × 8.3 in (300 × 211 mm)

**Warranty:**  
Two-year limited

## Part Number/Price

Part #	Model #	Capacity	Est. Weight	Price
112837	HC-3 Ki	6 × 0.001 lb (3 × 0.0005 kg)	11 lb (5 kg)	\$840.00
112838	HC-6 Ki	15 × 0.002 lb (6 × 0.001 kg)	11 lb (5 kg)	\$840.00
112839	HC15 Ki	30 × 0.005 lb (15 × 0.002 kg)	11 lb (5 kg)	\$840.00
112840	HC-30 Ki	60 × 0.01 lb (30 × 0.005 kg)	11 lb (5 kg)	\$840.00

## Options/Accessories

Part #	Model #	Description	Price
112841	HC-03 i	RS-232C for HC-i	\$95.00
112842	HC-06 i	Rechargeable battery pack	\$53.00
97766	TB:662	AC adapter, 120 V, standard with unit	\$47.50

# A&D® Weighing FC-i/Si Series

High Resolution Counting Scales



## Standard Features

- Seven segment vacuum fluorescent display (VFD)
- LED keypad prompting for intuitive operator use
- Automatic Counting Accuracy Improvement (ACAI)
- Display function - Hi/Ok/Lo
- Rugged aluminum die-cast frame with splash-proof display and keyboard

## Options

- Remote scale

## Specifications

**Power Source (included):**  
110 VAC 50/60 Hz AC adapter  
230 VAC 50/60 Hz AC adapter

**Internal Resolution:**  
Si Series: 1/5,000,000  
FC-i Series: 1/1,000,000

**Number of Scale Channels:**  
One local  
One remote (optional)

**Memory Items:**  
500 ID - six-digit ID, unit weight, tare weight, comparator limits, accumulator and 12-digit ID name

**Weight Sensor:**  
Si: Super hybrid sensor (SHS)  
FC-i: Strain gauge load cell

**Temperature:**  
Operating:  
Si: 41 °F to 104 °F (5 °C to 40 °C)  
FC-i: 14 °F to 104 °F (-10 °C to 40 °C)

**Dimensions:**  
(L × W × H)  
13.0 × 18.2 × 4.6 in  
(330 × 462 × 117 mm)

**Est. Weight:**  
108351 to 108357 15 lb  
108358 17 lb

**Warranty:**  
Two-year limited

## Part Number/Price

Part #	Model #	Capacity	Min Sample Weight	Pan Size	Price
108351	FC-500Si	1 × 0.00005 lb (500 g × .02 g)	0.0001g	5 × 5 in (127 × 127 mm)	\$2,080.00
108352	FC-5000Si	10 × 0.0005 lb (5 kg × .2 g)	0.001g	6.5 × 6.5 in (165 × 165 mm)	\$2,080.00
108353	FC-1000i	2 × 0.0002 lb (1 kg × .1g)	0.001g	8 × 6 in (203 × 152 mm)	\$1,530.00
108354	FC-2000i	5 × 0.0005 lb (2 kg × .2g)	0.002g	11.8 × 11 in (300 × 279 mm)	\$1,530.00
108355	FC-5000i	10 × 0.001 lb (5 kg × .5g)	0.005g	11.8 × 11 in (300 × 279 mm)	\$1,530.00
108356	FC-10Ki	20 × 0.002 lb (10 kg × 1g)	0.01g	11.8 × 11 in (300 × 279 mm)	\$1,530.00
108357	FC-20Ki	50 × 0.005 lb (20 kg × 2g)	0.02g	11.8 × 11 in (300 × 279 mm)	\$1,530.00
108358	FC-50Ki	100 × 0.01 lb (50 kg × 5g)	0.05g	11.8 × 11 in (300 × 279 mm)	\$1,530.00

## Options/Accessories

Part #	Model #	Description	Price
108360	FC-05i	Remote scale connection	\$175.00
97613	TB:636	AC adapter 120 V - standard with unit	\$47.50
97631	TB:164	AC adapter 240 V	\$69.00

COUNTING SCALES

# OHAUS® Ranger™ Count 3000

Industrial Counting Scales



## Standard Features

- Weigh in kilograms, pounds, grams or ounces
- 30-item data storage
- Three backlit LCD display windows
- RS-232 output
- Quick stabilization

## Options

- Ethernet
- Remote scale

## Specifications

### Power:

100 to 240 VAC, 50 to 60 Hz internal universal power supply

### Resolution:

Internal: 1/500,000

### Display:

Seven-segment 1/30,000, six-digit

### Number of Scale Channels:

One local  
One remote (optional)

### Memory Items:

(30) 12-digit part number, average piece weights, check counting or checkweighing parameters, tare weights, accumulated weights or counts

### Battery:

Lead acid, 210 hours, 12 hours recharge

### Temperature:

Operating:  
14 °F to 104 °F (-10 °C to 40 °C)

### Dimensions:

(L × W × H)  
12.2 × 12.9 × 4.6 in  
(311 × 327 × 117 mm)

### Platter Size:

11.8 × 8.9 in (300 × 225 mm)

### Approvals:

NTEP Certified 13-022 3000 e  
CAN/CSA-C22.2 No. 61010-1-04  
UL Std. No. 61010-1 (2nd edition)

### Warranty:

One-year limited

## Approvals



## Part Number/Price

Part #	Model #	Capacity	Est. Weight	Price
157273	RC31P1502	3 × 0.0001 lb (1.5 × 0.00005 kg) (48 × 0.002 oz) (1,500 × 0.05 g)	12 lb (5.45 kg)	\$1,075.00
157275	RC31P3	6 × 0.0002 lb (3 × 0.0001 kg) (96 × 0.05 oz) (3,000 × 0.1 g)	12 lb (5.45 kg)	\$1,075.00
157277	RC31P6	15 × 0.0005 lb (6 × 0.0002 kg) (240 × 0.01 oz) (6,000 × 0.2 g)	12 lb (5.45 kg)	\$1,075.00
157278	RC31P15	30 × 0.001 lb (15 × 0.0005 kg) (480 × 0.02 oz) (15,000 × 0.5 g)	12 lb (5.45 kg)	\$1,075.00
157279	RC31P30	60 × 0.002 lb (30 × 0.001 kg) (960 × 0.05 oz) (30,000 × 1 g)	12 lb (5.45 kg)	\$1,075.00

## Options/Accessories

Part #	Description	Price
157280	Remote second scale option kit	\$168.00
154638	Ethernet kit	\$168.00