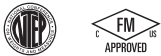




Picture is a representation of actual product

Approvals



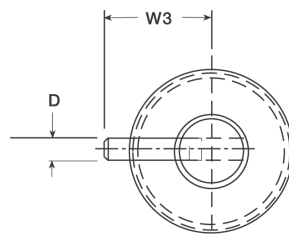
Order Information

Load Rating	Part #	Est. Weight	Price
50,000 lb	46497	5 lb	Consult
50,000 lb LE	47952	6 lb	Consult
Options			
Replacement anti-rotational pins	116181	1 lb	Consult
Replacement O-ring	92988	1 lb	Consult

LE=large envelope

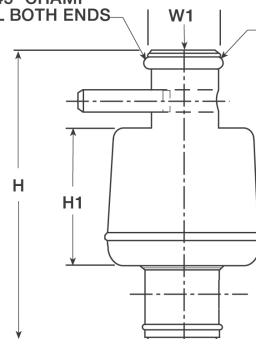
Dimensions

Rated Capacity	A	D	H	H1	H2	W1	W2	W3
50,000 lb/in								
50,000	0.62	0.38	6.00	2.82	1.59	1.46	1.46	2.50
50,000 LE	0.62	0.38	7.56	2.82	1.59	1.46	1.46	2.50

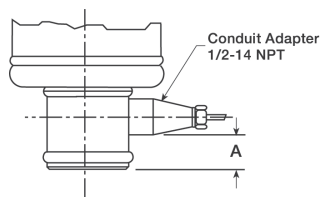


0.060 x 45° CHAMF
TYPICAL BOTH ENDS

O-RING SEAL
TYPICAL BOTH ENDS



4 CONDUCTOR CABLE;
22 AWG; SHIELDED &
JACKETED



Interchangeable Products

FAIRBANKS®
63951

Specifications

Full Scale Output:
2.0 mV/V nominal

Output Resistance:
1,000 (± 10 ohm)

Input Resistance:
1,000 ohm

Material/Finish:
Stainless steel

Temperature:
Compensated:
14 °F to 104 °F (-10 °C to 40 °C)
Operating:
0 °F to 150 °F (-18 °C to 65 °C)

Seal Type:
Hermetically sealed, IP68

Safe Overload:
150% full scale

Rated Excitation:
5 to 10 VDC (15 V maximum)

Combined Error:
0.03% full scale

Insulation Resistance:
1,000 megohm

Cable Length:
35 ft

Cable Diameter:
0.305 in
Polyurethane jacket

Cable Color Code:
Red +Excitation
Black -Excitation
Green +Signal
White -Signal

Warranty:
Two-year limited

Approvals:
cFMus
NTEP