



**EX**  
Danger  
Explosive atmosphere  
Kıvılcaklı  
Explosive Atmosphere



**SAFE WEIGHING IN  
ATEX 1/21 ZONES**



**DINI ARGEO**

**Scales - Weighing systems**

A RICE LAKE WEIGHING SYSTEMS COMPANY

## DO YOU HAVE TO WEIGH IN HAZARDOUS ATEX ZONES?

**DINI ARGEO**  
HAS THE PERFECT  
SOLUTION FOR YOU!



- ✓ **Superior quality design**
- ✓ **Connectivity**
- ✓ **ATEX and IECEx compliant**

These characteristics make our products unique on the market.

With the following Dini Argeo solutions, you can safely weigh in ATEX zones.

## ATEX SOLUTIONS FOR OVER 20 YEARS

For over 20 years, Dini Argeo has been the international benchmark for weighing systems for hazardous zones.

With a wide choice of products, communication interfaces, functions and intrinsically safe electronics, Dini Argeo solutions meet safety requirements and optimise production processes in ATEX 1/21 zones.

Dini Argeo also has a range of IECEx-certified products for the international market, which complete the ATEX solution offering for every weighing need on the market.

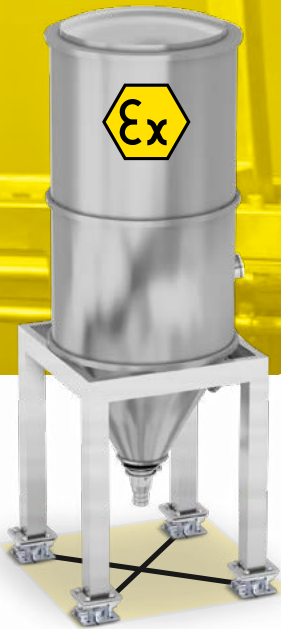
## DFWIECEX WEIGHT INDICATOR

- ✓ **AISI 304 stainless steel** casing with IP65 and IP68 certified protection
- ✓ **High-contrast RGB** with 6 digits, 25 mm high
- ✓ Complete offer of **industrial interfaces**, such as:
  - intrinsically safe inputs and outputs
  - intrinsically safe analogue output (programmable to 0 ... 10 VDC, 0 ... 20 mA or 4 ... 20 mA)
  - Up to 3 RS485 interfaces
  - Bluetooth



### ATEX classification:

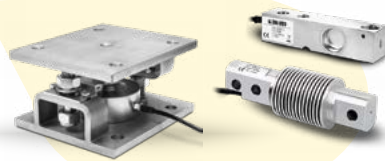
- gas: Ex ib [ib Gb] [ia Ga] IIC T4 Gb
- powders: Ex tb [ib Db] [ia Da] IIIC T135°C Db
- ATEX: II2 (2) G (1) G
- ATEX: II2 (2) D (1) D
- Ta 0°C / + 50°C



**KITS AND  
LOAD CELLS**



**DFWIECEX-BATCH1**  
version for filling and  
dosing processes



**PALLET  
SCALE**



**PALLET TRUCK  
SCALE**



**BENCH SCALE**



**FLOOR SCALE**

## 1/21 Zones



Optional  
Alibi memory



Rechargeable  
battery



Power supply



RS485



0...20mA



I/O

Input/Output



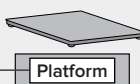
Bluetooth 4.2

3x RS485 interfaces

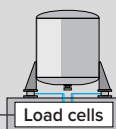
Analogue output  
0/4 - 20mA, 0-10 V

4 digital inputs  
12 digital outputs

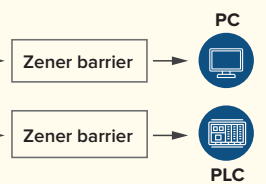
ATEX push-button box



Platform



Load cells



**Non-hazardous  
area**

## 0/20 Zones

Direct connection with load cell in zone 0  
No Zener barrier required

Dini Argeo dealer network:  
over 3500 partners  
in more than 130 countries across the world

“YOUR WORLDWIDE PARTNER  
FOR WEIGHING”



A RICE LAKE WEIGHING SYSTEMS COMPANY

#### COMPANY HEADQUARTERS

Via Della Fisica, 20  
41042 Spezzano di Fiorano Modena • Italy  
Tel. +39.0536 843418

#### SERVICE ASSISTANCE

Via Dell'Elettronica, 15  
41042 Spezzano di Fiorano Modena • Italy  
Tel. +39.0536 921784

#### OTHER DINI ARGEO LOCATIONS

DINI ARGEO WEIGHING INSTRUMENTS Ltd  
China

DINI ARGEO UK Ltd  
United Kingdom

DINI ARGEO FRANCE sarl  
France

DINI ARGEO GMBH  
Germany

DINI ARGEO OCEANIA  
Australia

## WHY CHOOSE DINI ARGEO?



#### WORLDWIDE SERVICE AND SHIPPING

International group with offices in America, Europe, India, China, Mexico and Oceania, over 1100 employees and a network of specialised partners in 130 countries worldwide.



#### FAST SHIPPING

Dini Argeo always keeps complete systems in stock that can be shipped quickly.



#### MADE IN ITALY

Dini Argeo weighing solutions are made in Italy and guarantee the highest quality standards.

SALES SERVICE AND TECHNICAL ASSISTANCE

Mod **DFWIECEX-LEN**

P/N   
DFWIECEX-LEN

Sn   
NOSN

  
DFWIECEX-LEN/NOSN

Rev. 01.07.2024