

# Product Guide

Printing Scales • Wrapping Systems • Labelers • Software



# Retail Solutions Product Guide

Rice Lake Retail Solutions, in partnership with Ishida, provides the very best in service, selection and speed to the retail industry. Ishida's innovative weighing and packaging solutions with Rice Lake's renowned customer service standards make

this retail partnership one of the strongest in the industry. With a comprehensive line of weighing equipment and 70 years in the scale business, Rice Lake continues its dedication to being the leader in advanced weighing solutions—from the front counter to the back room and everywhere retail solutions are found.

## Contact Information

Direct:  
**715-234-9171**

Toll Free USA:  
**800-472-6703**

Fax:  
**715-234-6967**

Email:  
**[prodinfo@ricelake.com](mailto:prodinfo@ricelake.com)**

Website:  
**[www.ricelake.com](http://www.ricelake.com)**

## Customer Assistance and Service Department Hours

Weekdays:  
**6:30 AM to 6:30 PM (CST)**

Saturday:  
**8:00 AM to 12:00 PM (CST)**

*Customer assistance available in English,  
Spanish and French*

# TABLE OF CONTENTS

## PRINTING SCALES

Uni-10 Series.....	4
Uni-8 Series.....	6
Uni-3 Series.....	8

## BASIC WEIGHING

RS-130/RS-160.....	10
IVersa-portion®.....	11
BenchPro™ BP-R.....	11

## SCALE MANAGEMENT SOFTWARE

ScaleLink Pro 5.....	12
ScaleLink Pro 5 Lite.....	13
Technology Compatible.....	13

## LABELERS

IP-Ai-P.....	14
WIL-Acro II.....	15

## MANUAL WRAPPING SYSTEMS

IP-Ai.....	16
Uni-3 RP.....	17
Uni-7 RP.....	17

## INTEGRATED WRAPPING SYSTEMS

WM-Micro.....	18
WM-Ai.....	20
WM-Ai with Day Glow Labeler.....	22

# Uni-10 Series

The Ishida Uni-10 retail scale provides flexibility and features ensuring complete control. The Uni-10's resistive touch panel provides easy use for operators wearing gloves without sacrificing durability. The scale's control panel has a flat design, making it easy to clean and sanitize, and the 12.1-inch operator display for improved visibility and larger graphics.

## Bench Scale

The Uni-10 has a large weighing platform so products do not hang over the edge, providing more accurate and reliable weights. The printer is below the weighing platform, keeping labels out of the way during weighing but still within easy reach.



## Elevated Display

The elevated customer display clearly shows product weight and costs, but can also be used for in-store promotions.





## Reliable Hanging Scale

The Uni-10's suspended weighing platters keep moisture from wet foods away from sensitive scale electronics. Ideal for weighing seafood, meat and produce, these scales feature an ergonomic design that keeps the display and keypad at eye level while the dish-shaped weighing pan is securely suspended below.

# Uni-8 Series

The Ishida Uni-8 price computing retail scale has a 10-inch screen for clear visibility and operation. The screen can be customized for frequently used functions such as PLU presets, categories, top sellers and more for quick access. Choose from bench, pole or hanging scale types to fit your store's needs. This scale's large memory stores high-quality images and videos, allowing you to show in-store promotions on the customer-facing display.

## Bench Scale

The Uni-8 has high-speed wired or wireless Ethernet communication, making it easy to process large files. State-of-the-art technology within the scale allows for more compatibility and flexibility with external systems in your store.



## Elevated Display

The elevated customer display clearly shows product weight and costs, but can also be used for in-store promotions.





## Reliable Hanging Scale

Suspended weighing platters on the Uni-8 keep moisture away from sensitive scale electronics. Ideal for items such as seafood and meat, these scales have an ergonomic design that keeps the display and keypad at eye level, with the weighing pan securely suspended below.



# Uni-3 Series

Enjoy the benefits of a scale, keypad and printer, all in one compact piece of equipment. The Uni-3 has premium-class presets, fast print speed and more labeling functions—all for less cost than comparable price computing scales with printers. With three models and two display types, the Uni-3 easily adapts to specific application needs. The Uni-3 L1 model features a vibrant blue alphanumeric display with a sharp white 16-segment capability. The Uni-3 L2 features a clear alphanumeric LCD display with one line alphanumeric and one line numeric only.



L1 model

## Bench Scale

For mobility and convenience, the Uni-3 bench scale model is ideal for countertops. The reduced height makes eye contact easy to maintain in customer-facing operations.

*Note: All Uni-3 Series' scales support a remote scale base for an economical hand wrapping option. The remote scale base is factory installed and must be requested at the time of order.*





*L2 model*

## **Pole Scale**

For tall countertops that are curved or rounded, the Uni-3 pole model provides an ergonomic setup for employees while still providing a raised customer display.

# Basic Weighing

## RS-130/RS-160

BATTERY-OPERATED,  
PRICE COMPUTING SCALES

The RS-130 and RS-160 retail scales are the ultimate choice for simple price computing applications. Delivering unmatched convenience and accuracy, the RS-130 and RS-160 provide one-button operation with weight displays in pounds, kilograms or ounces. The RS-130 has a 30-pound capacity and the RS-160 has a 60-pound capacity. For added convenience, the RS-130 and RS-160 can toggle units of measure and save tare, price and nine direct price lookups. The scales' large, stainless steel platters provide ample room for product, and standard in-use covers assure years of trouble-free operation. The RS-130 and RS-160 are powered by an included rechargeable battery, and a low-battery annunciator signals the operator when it's time to recharge.





## Versa-portion®

### COMPACT BENCH SCALE

Versa-portion is compact, sturdy and constructed of stainless steel; ideal for food processing facilities and busy commercial restaurants. An IP68 rating and removable stainless steel cover allow for easy clean-up and food service compliance. Its straightforward keypad toggles between ounces, pounds and grams, and custom pans and fixtures can be designed for limitless weighing potential.

## BenchPro™ BP-R

### RETAIL DIGITAL BENCH SCALE

The BenchPro is available in a variety of sizes and capacities, making it ideal for the retail industry. It can be equipped with an operator display and a customer-facing display for extra visibility. The display is protected by tempered glass, making it exceptionally scratch-resistant while also repelling water, dust and oil.



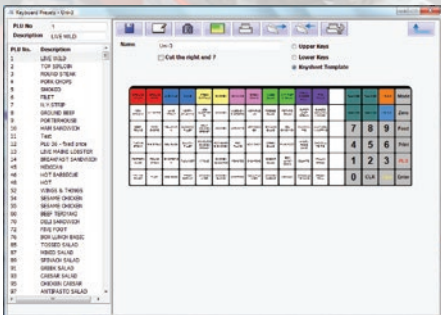
# Scale Management Software

## ScaleLink Pro 5

Compatible with Windows® Professional operating systems, ScaleLink Pro 5 is a powerful scale management tool for today's complex retail world. This program joins individual scales to in-store servers and central hosting networks, regardless of distance. Priced far less than similar PLU management software, ScaleLink Pro 5 offers additional reporting and updating capabilities, as well as features to simplify data management and product control. Easily manage information such as safe-handling instructions and nutritional facts for all products.



Windows is a registered trademark of Microsoft Corporation. InterScale software is a product of ADC. PLUM software is a product of Invatron.



## ScaleLink Pro 5 Lite

ScaleLink Pro 5 Lite is sophisticated scale management made simple by joining individual Uni-3 scales to an in-store computer/POS. Compatible with Windows Professional-level operating systems, ScaleLink Pro 5 Lite is loaded with features that simplify data management and product control. Enter and maintain item data and price changes as well as import and export ASCII delimited text files for seamless integration and continued operation.

## Technology Compatible

Rice Lake products are uniquely positioned to easily fit into any existing retail setting. For stores with multiple equipment brands, Ishida scales are supported by Invatron's PLUM and ADC's InterScale. Complement and enhance your existing system with networking, Ethernet or wireless communication, data backup, diagnostic tools and custom labeling—all possible with Rice Lake Retail Solutions.

# Labelers

## IP-Ai-P

The IP-Ai-P prints at a speed of 150 millimeters per second, and with its unique batching capabilities, it is ideal for high-volume printing applications in bakeries. Its custom graphics feature creates stunning labels with all required nutritional and ingredient information, and a fully customizable color touchscreen provides easy access to PLUs via category keys.

The IP-Ai-P features easy label roll front-loading with a nine-inch roll capacity to streamline prepackaging operations. For consistent and accurate pricing, the IP-Ai-P networks with ScaleLink Pro 5 and other third-party product management software.



*IP-Ai-P*



*WIL-Acro II*

## **WIL-Acro II**

The WIL-Acro II compact label printer features ultra-fast printing speeds and a front-loading label cassette. The color touchscreen streamlines operation and its compact size optimizes workspace for applications such as floral counters and bakeries. Supporting multiple label formats, the WIL-Acro II prints all legally required ingredient and nutritional information. Productivity is also increased immensely with a label batching feature which accumulates and prints multiple labels for several different items. A full-color touchscreen, sleek design and custom label features make the WIL-Acro II ideal for all versatile labeling needs.

# Manual Wrapping Systems

Rice Lake Retail Solutions provides a variety of configurations for manual wrapping, weighing, and labeling applications. From less volume to higher store throughput, manual wrapping systems are available for a variety of product and packaging requirements. Choose from a quality selection of hand wrapping options to create an efficient system for your retail packaging needs.

Most of our price-computing countertop scales can be used to create a system that works best for your particular setting.

## IP-Ai

### REMOTE SCALE BASE

With fast weighing and print speeds of 100 millimeters per second, the IP-Ai excels in high-volume applications. Its front-loading feature and large, nine-inch label roll capacity keep businesses up and running longer. The ability to store and print custom graphics produces eye-catching labels with all nutritional, safe-handling, country of origin and ingredient information.

From ergonomic design to high-speed performance, the IP-Ai delivers the latest technology to streamline prepackaging operations.



*IP-Ai with optional wrapping components*



## Uni-3 RP

REMOTE SCALE BASE

Networking capabilities and user-friendly operation make the Uni-3 with remote scale base system ideal for prepack operations and manual wrapping stations. Choose from multiple label formats for increased productivity and versatility.



## Uni-7 RP

REMOTE SCALE BASE

The Uni-7 RP with remote scale base is the perfect model to integrate with stretch film wrapping machines and manual hand-wrapping stations. Positive input response means operators feel a tactile sensation and hear a beep when the screen or a button is pressed.



# Integrated Wrapping Systems

For over 100 years, Ishida has delivered high-quality, innovative wrapping, weighing and labeling equipment—always staying at the forefront of technology. Rice Lake and Ishida are leaders in serving a vast range of needs in the retail market, from low-production requirements to high-capacity demand. Choose the best wrapper with color touchscreen, scale and printer to meet your needs.

## WM-Micro

TABLETOP WRAPPER  
WITH MANUAL LABEL APPLICATION

The WM-Micro is a semi-automatic wrapping machine with an integrated scale and printer. It's smaller than a standard hand-wrapping station and can be easily installed on a work table in nearly any backroom. It's designed to wrap a wide variety of trays with high-quality wrapping to minimize defects and reduce waste.





## User-friendly Operation

Reducing repetitive manual labor for operators, the WM-Micro semi-automatic wrapper consistently delivers high-quality wrapping. A large 12.2-inch operator display is easy to read, and a responsive interface powered by LINUX OS supports intuitive operation.

Film and label rolls can be quickly and easily replaced, and the WM-Micro is designed to minimize downtime for cleaning and maintenance.

# Integrated Wrapping Systems

## WM-Ai

PC-BASED AUTOMATIC WRAPPER WITH  
AUTOMATIC LABEL APPLICATOR

With the ability to weigh, wrap and label up to 35 packs per minute, Ishida's versatile, PC-based WM-Ai automatic wrapper delivers space-saving efficiency with high-speed performance. Two 5,000 foot rolls of film on one side reduce overall floor space and optimize production flow. The user-friendly, color touchscreen makes operation extremely simple while easy access under the unit helps maintain strict food processing and handling guidelines. An optional in-feed conveyor creates an ergonomic production line while promoting efficiency.





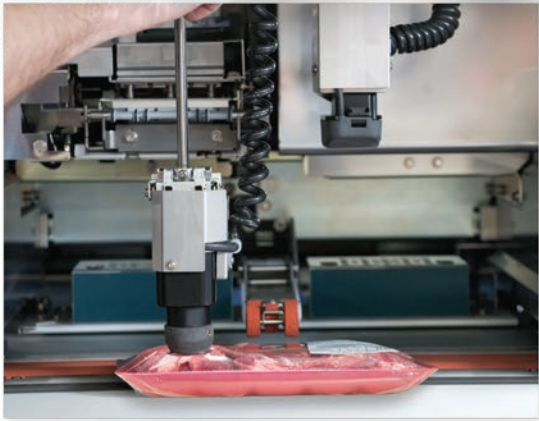
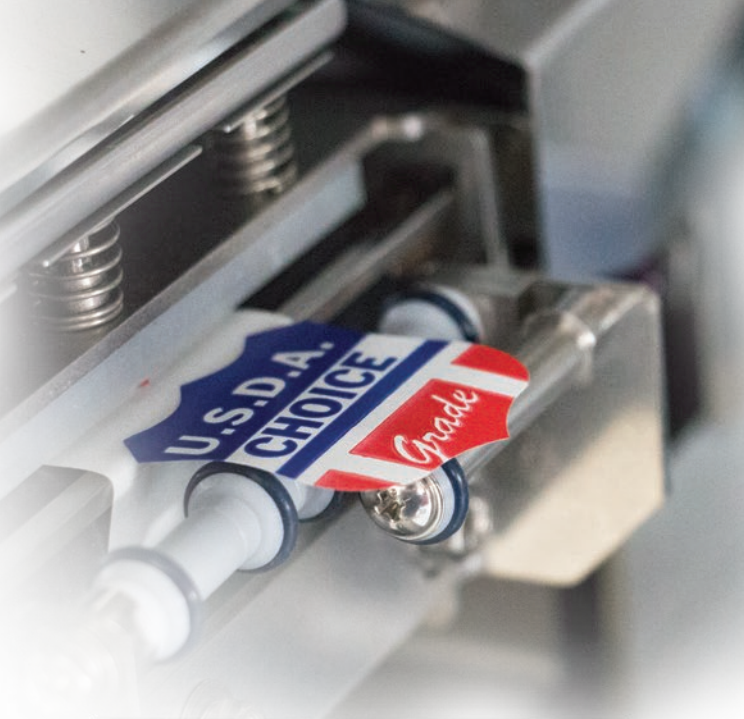
# Integrated Wrapping Systems

## WM-Ai with Day Glow Labeler

PC-BASED AUTOMATIC WRAPPER  
WITH DAY GLOW LABELER

The WM-Ai with Day Glow Labeler includes all of the features of the standard WM-Ai and adds a secondary day glow label printer, allowing for a wide variety of label designs or pre-printed labels to be applied to product, in addition to the main label. The Day Glow Labeler will print and adhere the label to the product wrap immediately after applying the main label, without slowing down operations. Adding a day glow label takes product marketing and appearance to a higher level with informative graphics and special messages.







**AMERICAS**  
**CORPORATE HEADQUARTERS**  
**RICE LAKE, WISCONSIN**  
 Jasper, Alabama  
 Fernley, Nevada  
 Kent, Washington  
 Concord, California  
 Newtown, Connecticut  
 Charlestown, Massachusetts  
 Monterrey, Mexico  
 Panama Pacific, Panama

**EUROPE**  
 Modena, Italy  
 Milan, Italy  
 Bristol, United Kingdom  
 Frankfurt, United Kingdom  
 Heeren, The Netherlands  
 Paris, France  
 Barcelona, Spain

**ASIA**  
 Shanghai, China  
 Chennai, India  
 Indore, India

**OCEANIA**  
 Sydney, Australia

The strongest partnerships are founded on commitment, integrity and character. Rice Lake's commitment to excellence expands with Ishida's innovative range of weighing and packaging solutions. Now, Rice Lake Retail Solutions can provide uncontested excellence in product selection, service and weighing expertise.



230 W. Coleman St. • Rice Lake, WI 54868 • USA  
 TEL: 715-234-9171 • FAX: 715-234-6967

[www.ricelake.com/retail](http://www.ricelake.com/retail)

*Specifications subject to change without notice*  
 © 2025 Rice Lake Weighing Systems  
 PN 52045 en-US 1/25 REV-B