

# RL32218S-HE

Stainless Steel, Hermetically Sealed, NTEP Certified 1:5,000 Class III Multiple Cell, IP69K



Picture is a representation of actual product.

### Approvals



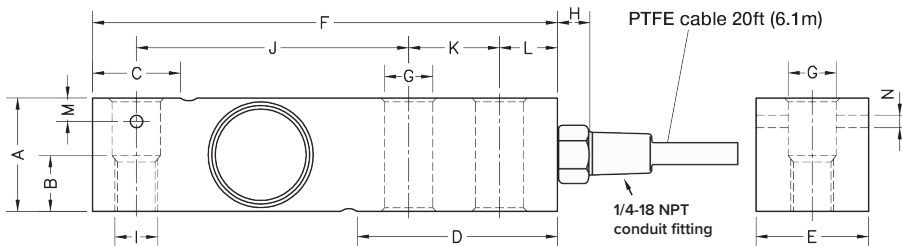
### Order Information

Load Rating	Part #	Est. Weight	Price
<b>RL32218S-HE PTFE Cable</b>			
1,000 lb	191634	3 lb	Consult
2,500 lb	191635	3 lb	Consult
4,000 lb	191636	3 lb	Consult
5,000 lb SE	208669	3 lb	Consult
5,000 lb LE	191637	5 lb	Consult
10,000 lb	191638	5 lb	Consult
<b>RL32218S-HE Rodent Protection Cable</b>			
1,000 lb	223599	3 lb	Consult
2,500 lb	209620	3 lb	Consult
4,000 lb	223600	3 lb	Consult
5,000 lb SE	223601	3 lb	Consult

SE=small envelope; LE=large envelope

### Dimensions

Rated Capacity	A	B	C	D	E	F	G	H	I	J	K	L	M	N
lb/in														
1,000 to 5,000 SE	1.24	0.59	0.96	2.20	1.24	5.12	0.53	0.70	1/2-20 UNF	3.00	1.00	0.62	0.25	0.13
5,000 LE to 10,000	1.50	0.75	1.45	2.99	1.50	6.75	0.80	0.70	3/4-16 UNF	3.75	1.50	0.75	-	-



### Interchangeable Products

RICE LAKE WEIGHING SYSTEMS

**RL35082**

RICE LAKE WEIGHING SYSTEMS

**RL32019S-HE**.....page 109

VPG® SENSORTRONICS®

**65083S**.....page 285

### Weigh Module Available

RICE LAKE WEIGHING SYSTEMS

**RL50210TA**.....page 41

RICE LAKE WEIGHING SYSTEMS

**RL1800 Series**.....page 52

### Specifications

#### Full Scale Output:

2.0 mV/V ± 0.05%  
mV/V/ohm calibration

#### Output Resistance:

350 (± 3) ohm

#### Input Resistance:

400 (± 20) ohm

#### Material/Finish:

Stainless steel

#### Temperature:

Compensated:  
14 °F to 104 °F (-10 °C to 40 °C)

Operating:  
0 °F to 200 °F (-18 °C to 93 °C)

#### Seal Type:

Hermetically sealed, IP69K

#### Safe Overload:

150% full scale

#### Rated Excitation:

5 to 10 VDC (15 V maximum)

#### Combined Error:

0.017% full scale

#### Insulation Resistance:

> 5,000 megohm

#### Cable Length:

20 ft PTFE cable  
30 ft RP

#### Cable Color Code:

Red +Excitation  
Black -Excitation  
Green +Signal  
White -Signal

#### Warranty:

Two-year limited

#### Approvals:

cFmus  
NTEP 18-106