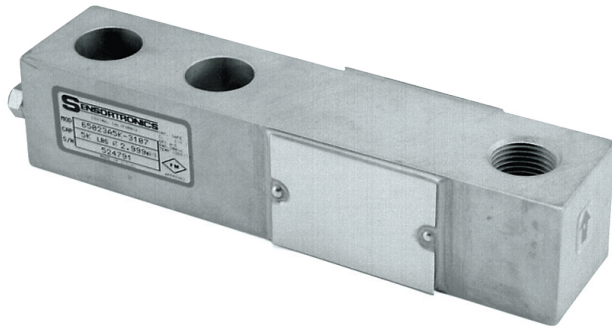


# 65023SS

Stainless Steel, Environmentally Sealed, IP67



Picture is a representation of actual product

### Approvals

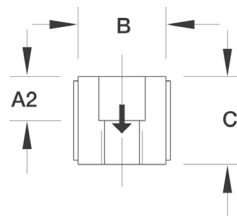
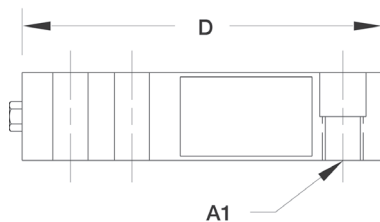
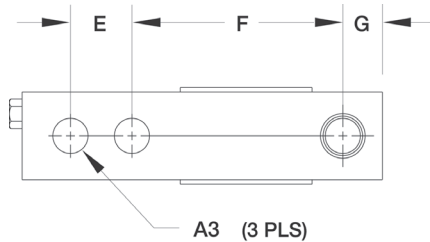


### Order Information

Load Rating	Part #	Est. Weight	Price
<b>Threaded Hole</b>			
250 lb	46499	3 lb	Consult
500 lb	17188	3 lb	Consult
15,000 lb	17156	9 lb	Consult
20,000 lb	17160	9 lb	Consult

### Dimensions

Rated Capacity	A1	A2	A3	B	C	D	E	F	G
250 to 500	1/2-20 UNF	0.50	0.53	1.25	1.00	5.12	1.00	3.00	0.50
15,000 to 20,000	1-14 UNS	1.00	1.03	2.00	2.00	8.88	2.00	4.88	1.00



### Weigh Module Available

- RICE LAKE WEIGHING SYSTEMS  
**RL50210TA**..... page 41
- RICE LAKE WEIGHING SYSTEMS  
**RL1800 Series**..... page 52

### Specifications

- Full Scale Output:**  
3.0 mV/V
- Output Resistance:**  
349 to 355 ohm
- Input Resistance:**  
343 to 357 ohm
- Material/Finish:**  
Stainless steel
- Temperature:**  
Operating:  
0 °F to 150 °F (-18 °C to 65 °C)
- Seal Type:**  
Environmentally sealed, IP67
- Safe Overload:**  
150% full scale
- Safe Sideload:**  
100% full scale
- Rated Excitation:**  
5 to 10 VDC (15 V maximum)
- Nonlinearity:**  
0.03% full scale
- Hysteresis:**  
0.02% full scale
- Insulation Resistance:**  
5,000 megohm
- Deflection at Capacity:**  
250 to 500 lb: 0.013 in  
15,000 to 20,000 lb: 0.048 to 0.063 in
- Cable Length:**  
20 ft
- Cable Diameter:**  
0.200 in  
Polyurethane jacket
- Cable Color Code:**  
Red +Excitation  
Black -Excitation  
Green +Signal  
White -Signal
- Warranty:**  
One-year limited
- Approvals:**  
cFMus