

# RL1600 SS Series with RL77032SS

Stainless Steel, Weigh Modules



Picture is a representation of actual product.

Load Cell Approvals



## Order Information

Load Rating (Per Module)	Part #	Price
<b>Single Module (Does NOT Include Load Cell)</b>		
1,000 to 5,000 lb	<b>17813</b>	Consult
10,000 to 25,000 lb	<b>17815</b>	Consult
50,000 lb	<b>17842</b>	Consult
75,000 lb	<b>25347</b>	Consult
<b>3-Module Kit</b>		
1,000 lb	<b>225333</b>	Consult
1,500 lb	<b>225334</b>	Consult
2,000 lb	<b>225335</b>	Consult
2,500 lb	<b>225336</b>	Consult
5,000 lb	<b>225337</b>	Consult
10,000 lb	<b>225338</b>	Consult
15,000 lb	<b>225340</b>	Consult
20,000 lb	<b>225341</b>	Consult
25,000 lb	<b>225342</b>	Consult
50,000 lb	<b>225343</b>	Consult
75,000 lb	<b>225344</b>	Consult
<b>4-Module Kit</b>		
1,000 lb	<b>225347</b>	Consult
1,500 lb	<b>225349</b>	Consult
2,000 lb	<b>225350</b>	Consult
2,500 lb	<b>225351</b>	Consult
5,000 lb	<b>225352</b>	Consult
10,000 lb	<b>225353</b>	Consult
15,000 lb	<b>225354</b>	Consult
20,000 lb	<b>225355</b>	Consult
25,000 lb	<b>225356</b>	Consult
50,000 lb	<b>225357</b>	Consult
75,000 lb	<b>225358</b>	Consult

## Dimensions

Rated Capacity	C	H	H1	H2	L	L1	L2	L3	T	W	W1	W2	W3
1,000 to 5,000 lb/in	0.56	5.00	0.50	0.50	9.25	2.75	4.00	6.25	1/2-13 UNC	5.00	3.75	2.75	4.00
10,000 to 25,000 lb/in	0.78	7.87	0.75	0.75	12.00	6.00	8.00	7.50	3/4-10 UNC	8.00	6.00	6.00	8.00
50,000 to 75,000 lb/in	0.78	9.25	1.00	1.00	16.25	6.50	9.00	11.50	1 1/4-7 UNC	12.00	9.50	6.50	9.00

## VPG Sensortronics 65016W Order Information

Load Rating (Per Module)	Part #	Price
<b>3-Module Kit</b>		
1,000 lb	<b>18213</b>	Consult
1,500 lb	<b>18214</b>	Consult
2,500 lb	<b>18216</b>	Consult
5,000 lb	<b>18217</b>	Consult
10,000 lb	<b>18218</b>	Consult
15,000 lb	<b>18219</b>	Consult
20,000 lb	<b>18220</b>	Consult
25,000 lb	<b>18221</b>	Consult
50,000 lb	<b>18222</b>	Consult
75,000 lb	<b>25354</b>	Consult
<b>4-Module Kit</b>		
1,000 lb	<b>18224</b>	Consult
1,500 lb	<b>18225</b>	Consult
2,500 lb	<b>18227</b>	Consult
5,000 lb	<b>18228</b>	Consult
10,000 lb	<b>18229</b>	Consult
15,000 lb	<b>18230</b>	Consult
20,000 lb	<b>18231</b>	Consult
25,000 lb	<b>18232</b>	Consult
50,000 lb	<b>18233</b>	Consult
75,000 lb	<b>25355</b>	Consult
<b>Dummy Load Cells (Mild Steel)</b>		
1,000 to 5,000 lb	<b>18236</b>	Consult
10,000 to 25,000 lb	<b>18237</b>	Consult
50,000 lb	<b>18238</b>	Consult

## Complete Kit Includes

- Three or four RL1600 stainless steel compression mounts with RL77032SS environmentally protected stainless steel double-ended shear beam load cells
- One JB4SS NEMA Type 4X stainless steel signal trim junction box
- 25 ft of hostile environment EL147HE SURVIVOR® load cell cable

## Standard Features

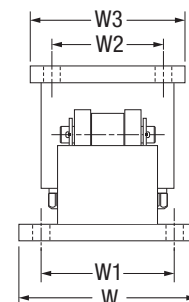
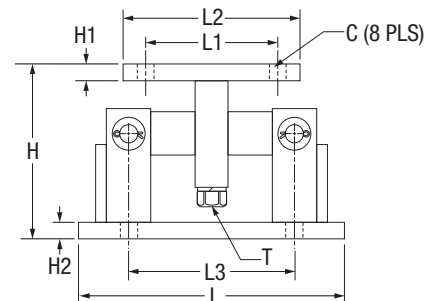
- Capacities (per module): 1,000 to 75,000 lb
- Stainless steel construction
- Self-checking, easy-to-use design allows module to be bolted directly to tank leg without requiring additional mounting plates or load buttons
- Double-ended shear beam design, center loaded
- Compatible with VPG® Sensortronics® 65016W SS load cells

## Applications

- Medium- to heavy-capacity tanks, bins and hoppers
- Bulk material management

## Shims, Stainless

	Part #	Price
<b>1,000 to 5,000 lb</b>		
0.0625	<b>150852</b>	Consult
0.125	<b>150853</b>	Consult
0.250	<b>150854</b>	Consult
<b>10,000 to 25,000 lb</b>		
0.0625	<b>150855</b>	Consult
0.125	<b>150856</b>	Consult
0.250	<b>150857</b>	Consult
<b>50,000 to 75,000 lb</b>		
0.0625	<b>150858</b>	Consult
0.125	<b>150859</b>	Consult
0.250	<b>150861</b>	Consult



WEIGH MODULES