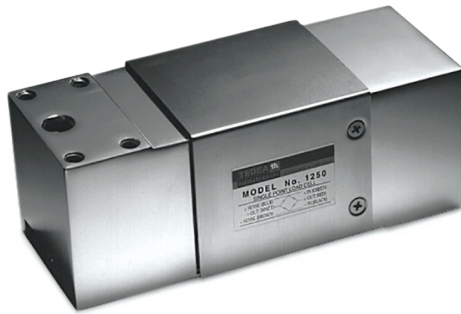


# 1250

Aluminum, Environmentally Sealed, NTEP Certified 1:5,000 Class III Single Cell, Potted, IP67



Picture is a representation of actual product

### Approvals



Available upon request

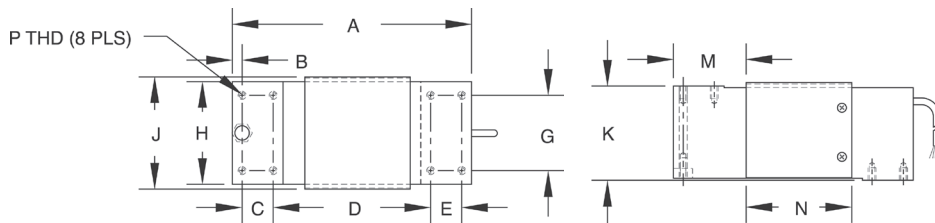
Available upon request

### Order Information

Load Rating	Part #	Est. Weight	Price
<b>NTEP Certified, 10 ft Cable</b>			
50 kg	17478	6 lb	Consult
75 kg	17469	6 lb	Consult
100 kg	33711	6 lb	Consult
150 kg	33712	6 lb	Consult
200 kg	33713	6 lb	Consult
250 kg	33714	6 lb	Consult
300 kg	33715	6 lb	Consult
500 kg	33716	6 lb	Consult
635 kg	33717	6 lb	Consult
1,000 kg	17480	6 lb	Consult
<b>Non-NTEP Certified, 25 ft Cable</b>			
50 kg	40944	6 lb	Consult
75 kg	40945	6 lb	Consult
100 kg	40946	6 lb	Consult
150 kg	32342	6 lb	Consult
200 kg	32341	6 lb	Consult
250 kg	40947	6 lb	Consult
300 kg	32340	6 lb	Consult

### Dimensions

Rated Capacity	A	B	C	D	E	G	H	J	K	M	N	P
kg/mm												
50 to 1,000	191.0	11.0	25.0	125.0	25.0	60.0	75.0	82.0	75.0	57.5	85.0	5/16-18 UNC x 15 DP



### Interchangeable Products

RICE LAKE WEIGHING SYSTEMS  
**RL1218A**..... page 170

RICE LAKE WEIGHING SYSTEMS  
**RL1250**

FLINTEC®  
**PCB\***..... page 214

TRANSCELL®  
**FAY**

\*Stainless steel, hermetically sealed

### Specifications

**Full Scale Output:**  
2.0 mV/V

**Bridge Resistance:**  
350 ohm, nominal

**Material/Finish:**  
Anodized aluminum

**Temperature:**  
 Compensated:  
 14 °F to 104 °F (-10 °C to 40 °C)  
 Operating:  
 0 °F to 150 °F (-18 °C to 65 °C)

**Seal Type:**  
Environmentally sealed, IP67

**Safe Overload:**  
150% of full scale at center loading point

**Safe Overload:**  
150% of full scale at center loading point

**Rated Excitation:**  
5 to 10 VDC (15 V maximum)

**Combined Error:**  
0.02% full scale

**Insulation Resistance:**  
2,000 megohm

**Deflection at Capacity:**  
0.015 in

**Cable Length:**  
10 ft  
25 ft

**Cable Diameter:**  
0.200 in  
PVC jacket

**Cable Color Code:**  
 Green +Excitation  
 Black -Excitation  
 Red +Signal  
 White -Signal  
 Blue +Sense  
 Brown -Sense

**Max Platform Size:**  
 50 to 500 kg: 800 × 800 mm  
 635 to 1,000 kg: 600 × 600 mm

**Warranty:**  
One-year limited

**Approvals:**  
 cFMus  
 NTEP  
 Ex (Available upon request)  
 OIML (Available upon request)