



Picture is a representation of actual product

Approvals

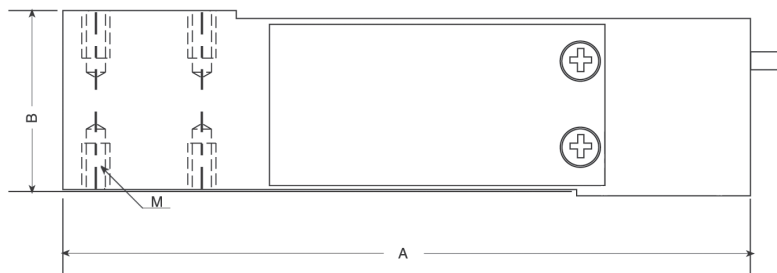
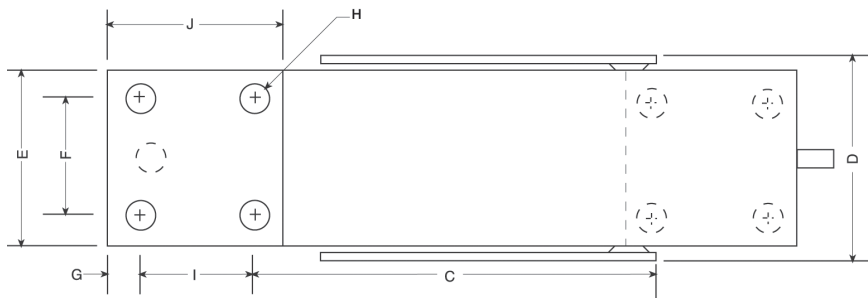


Order Information

Load Rating	Part #	Est. Weight	Price
200 kg	47880	3 lb	Consult
250 kg	47881	3 lb	Consult

Dimensions

Rated Capacity	A	B	C	D	E	F	G	I	J	H	M
kg/mm											
200 to 250	150.1	39.9	86.6	43.4	38.1	25.4	6.35	25.4	38.1	1/4-20 UNC x 13 DP	1/4-28 UNF x 10 DP



Specifications

- Full Scale Output:**
2.0 mV/V
- Output Resistance:**
351 (± 5) ohm
- Input Resistance:**
380 (± 15) ohm
- Material/Finish:**
Stainless steel
- Temperature:**
Operating:
0 °F to 150 °F (-18 °C to 65 °C)
- Seal Type:**
Environmentally sealed, IP64
- Safe Overload:**
150% full scale
- Rated Excitation:**
5 to 10 VDC (15 V maximum)
- Combined Error:**
0.02% full scale
- Insulation Resistance:**
2,000 megohm
- Deflection at Capacity:**
0.015 in
- Cable Length:**
10 ft
- Cable Diameter:**
0.200 in
PVC jacket
- Cable Color Code:**
Green +Excitation
Black -Excitation
Red +Signal
White -Signal
Blue +Sense
Brown -Sense
- Max Platform Size:**
15.5 × 15.5 in
- Warranty:**
One-year limited
- Approvals:**
cFMus

VPC®
TEDEA-HUNTLEIGH®