

WM-MICRO

COMPACT WRAPPER



RICE LAKE
RETAIL SOLUTIONS

ISHIDA

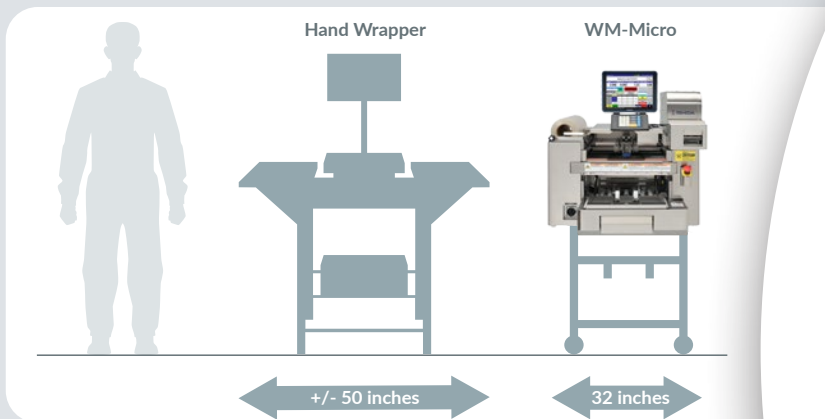
800-472-6703

www.ricelake.com/retail

Minimize Space, Maximize Efficiency

Compact and Efficient Weighing, Wrapping and Labeling

The WM-Micro is a semi-automatic wrapping machine with integrated scale and printer. It's smaller than a standard hand-wrapping station and can be easily installed in nearly any backroom.



Simplified Operation

Reducing repetitive manual labor for operators, the WM-Micro consistently delivers high-quality wrapping. A large 12.2-inch operator display is easy to read and features a responsive interface powered by LINUX OS to support intuitive operation.

Film and label rolls can be quickly and easily replaced, and the WM-Micro is designed to minimize downtime for cleaning and maintenance.



COMPACT

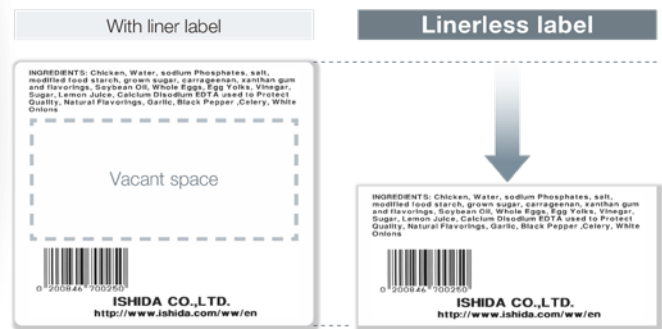


Wrap a Variety of Trays

The WM-Micro allows operators to weigh, wrap and label up to 15 trays per minute. It is designed to wrap many types of trays, supporting a wide variety of products. It features high-quality and stable wrapping to minimize defects and reduce waste.

High-performance Printer

The WM-Micro is a PC-based system that enables True-Type font printing for attractive, easy-to-read labels. The integrated printer has a 3-inch print head with 12-dot/mm resolution. To reduce label roll replacements, the WM-Micro can support a label roll diameter of 5 inches (125 mm) with a customizable label length for flexible designs.



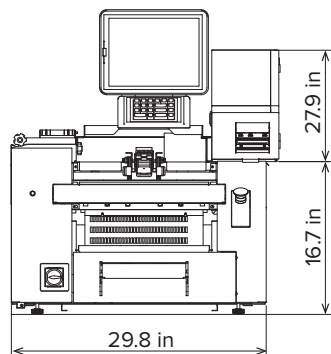
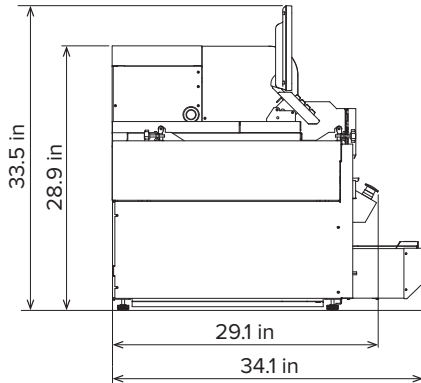
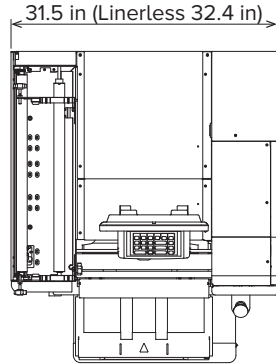
Efficient Linerless Labels

A second version of the WM-Micro provides linerless label printing. Linerless labels print more labels per roll and reduce the frequency of roll replacement. The linerless label model automatically cuts labels to fit your print size requirements.



WM-MICRO

COMPACT WRAPPER



SPECIFICATIONS

SCALE UNIT

CAPACITY/DIVISION: 0-15 lb x 0.005 lb / 15-30 lb x 0.01 lb (multi-interval)
 0-6 kg x 0.002 kg / 6-15 kg x 0.005 kg
 0-30 lb x 0.01 lb (single range)
 0-15 kg x 0.005 kg

MIN. PRINT WEIGHT: 0.1 lb (0.04 kg)

WRAPPING UNIT

CAPACITY: 0.10 - 7.70 lb (0.04 - 3.5 kg)

PACKS/MINUTE MAX: 15 ppm

WRAPPING SIZE: Width: 5.9 - 15.0 in (150 - 380 mm)
 Depth: 5.0 - 9.6 in (127 - 244 mm)
 Height: 0.4 - 5.1 in (10 - 130 mm)

TRAY TYPE: PSP, PP, PET, Paper

FILM TYPE: Polyolefin / PVC (film type suitable for automatic wrapping)

FILM SIZE: 400, 450, 500 mm
 Outer diameter: 200 mm or less

PRINTER UNIT

PRINT HEAD: 3 inch direct thermal (960 dots), 12 dots / mm

PRINTING SPEED: 120 mm / sec

PRINT AREA: **With Liner:** Width: Up to 2.9 in (76 mm)
Linerless: Width: Up to 3.0 in (77 mm)

LABEL SIZE: **With Liner:** Width: 1.1 - 3.1 in (30 - 80 mm)
 Length: 0.9 - 4.1 in (23 - 105 mm)
Linerless: Width: 1, 2, 3 in (44, 60, 80 mm)
 Length: 1.1 - 19.6 in (30 - 500 mm)

LABEL ROLL SIZE: 4.9 in (125 mm)

INNER CORE DIAMETER: 1.5 in (40 mm)

LABEL STORAGE CAPACITY:

With Liner: 1,820 labels/roll
Linerless: 2,700 labels/roll

CONTROLLER UNIT

DISPLAY: Backlit 12.1" XGA (800 x 600) TFT Color LCD

TACTILE KEYS: 19 Keys

GENERAL

INTERFACE: USB: 4ch 10/100base-TX: 1ch

MEMORY CAPACITY: 1 GB

POWER SUPPLY: Single phase, 200-240V, 50/60Hz

POWER CONSUMPTION MAX:

Operation: 1200W or less
 Standby: 1000W or less
 Sleep mode: 200W or less

OPERATIONAL ENVIRONMENT:

Temperature: 41 °F to 95 °F (5 °C to 35 °C)
 Humidity: 20-85%RH (without condensation)

MACHINE WEIGHT: **With Liner:** Approx. 283.7 lb (128.5 kg)
Linerless: Approx. 286.0 lb (129.8 kg)

NOISE LABEL: 73 dB or less

OPTION: Tenkey cover, anti-static wire, wireless LAN unit, film roll protection cover unit, -10 mm infeed pusher