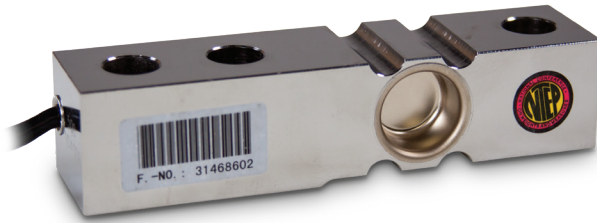


H35

Stainless Steel, Welded Seal, NTEP Certified 1:5,000 Class III Multiple Cell, IP67



Picture is a representation of actual product.

Approvals

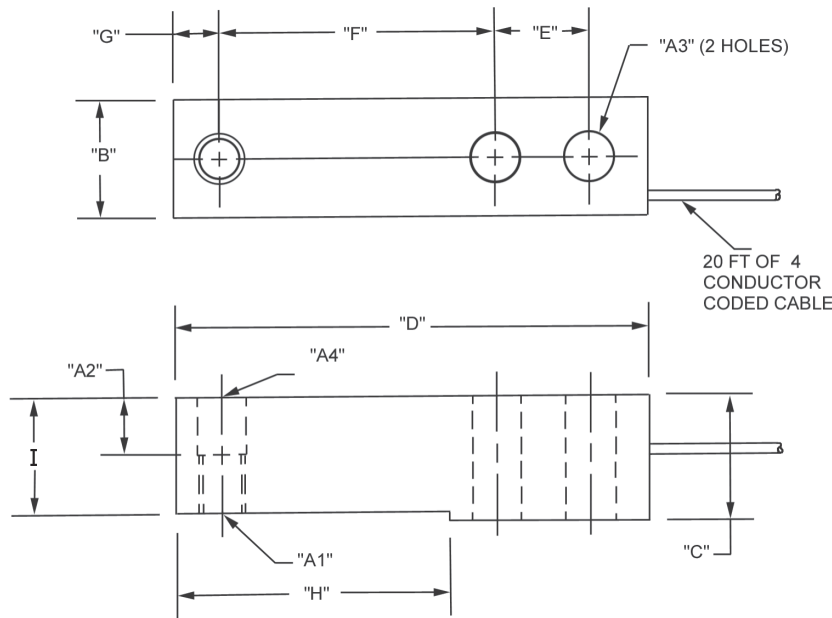


Order Information

Load Rating	Part #	Est. Weight	Price
500 lb	84818	3 lb	Consult
1,000 lb	64876	3 lb	Consult
2,500 lb	64877	3 lb	Consult
4,000 lb	64878	3 lb	Consult
5,000 lb	64879	3 lb	Consult

Dimensions

Rated Capacity	A1	A2	A3	A4	B	C	D	E	F	G	H	I
500 to 5,000	1/2-20 UNF-2B	0.62	0.53	0.53	1.21	1.19	5.12	1.00	3.00	0.50	2.85	1.12



Interchangeable Products

RICE LAKE WEIGHING SYSTEMS
RLH35page 114

METTLER TOLEDO®
500 lb-8 ft cable..... TB601019-008
1,000 lb-20 ft cable TB601016-020
2,500 lb-8 ft cable.. TB601016-008
4,000 lb-20 ft cable TB601017-020
5,000 lb-8 ft cable.. TB601018-008

METTLER TOLEDO
500 lb..... TB600830-020

METTLER TOLEDO
1,000 lb..... TB600831-020

METTLER TOLEDO
2,000 lb..... TB600832-020

METTLER TOLEDO
2,500 lb..... TB600833-020

Specifications

- Full Scale Output:**
3.0 mV/V
- Output Resistance:**
350 (± 3) ohm
- Input Resistance:**
385 ohm nominal
- Material/Finish:**
Stainless steel
- Temperature:**
Compensated:
14 °F to 104 °F (-10 °C to 40 °C)
Operating:
0 °F to 150 °F (-18 °C to 65 °C)
- Seal Type:**
Welded-seal, IP67
- Safe Overload:**
150% full scale
- Safe Sideload:**
100% full scale
- Rated Excitation:**
5 to 15 VDC
- Combined Error:**
0.02% full scale
- Insulation Resistance:**
5,000 megohm
- Cable Length:**
20 ft
- Cable Diameter:**
0.190 in Polyurethane jacket
- Cable Color Code:**
Green +Excitation
Black -Excitation
White +Signal
Red -Signal
Yellow Shield
- Warranty:**
One-year limited
- Approvals:**
FM
NTEP