

# 381 Synergy Series

## Battery Powered Digital Weight Indicator



### Approvals



Measurement  
Canada  
Approved

### Standard Features

- LCD display
- Battery powered
- Push-button and keyed tare
- Two communication ports
- Five tactile buttons
- Configurable print formats
- ABS enclosure

### Options

- Time/date

### Part Number/Price

Part #	Description	Price
215695	381 Universal, AA battery powered	Consult
215696	381 Universal, Nickel metal hydride (NiMH) battery powered	Consult

### Options/Accessories

Part #	Description	Price
215273	RS-232 DB9 cable, 1.5 m DB9 female RJ11 connector, compatible with 381 model	Consult
204258	Real time clock module	Consult
216647	3 mm t-handle hex key	Consult
223864	Knob, stainless steel M6 x 1.0 inch	Consult

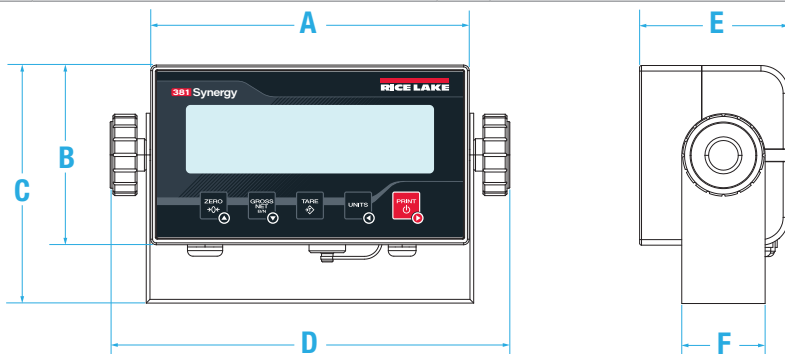
To have your option factory installed, please specify when placing your order.



† US plug (NA) - Type B

### Dimensions

381 Synergy Series			
A	6.77 in (172 mm)	D	8.50 in (216 mm)
B	3.82 in (97 mm)	E	3.17 in (81 mm)
C	5.06 in (129 mm)	F	1.77 in (45 mm)



### Specifications

#### Power:

Battery: AA or Nickel Metal Hydride (NiMH)  
381-2D-AA Adapter: 115/230 VAC to 12 VDC  
381-2D-NiMH Charger: 115/230 VAC

#### Power Consumption:

AA: input 0.8 A  
(6 W while using AC adapter)  
NiMH: input of 0.35 A

#### Battery Life:

AA: 40 hours with 1 × 350 ohm load cell  
NiMH: 80 hours with 1 × 350 ohm load cell

#### Excitation Voltage:

5 VDC, 8 × 350 ohm or 16 × 700 ohm load cells

#### Analog Signal Input Range:

-0.3 mV to +30 mV  
common mode voltage 0.7 V to 3.3 V

#### Analog Signal Sensitivity:

1 μV/graduation recommended

#### A/D Sample Rate:

5, 6, 10, 12, 20, 25, 40, 50, 80, 100Hz,  
software selectable

#### Resolution:

Internal: 8,000,000 counts  
Display: 100,000

#### System Linearity:

Within 0.01% full scale

#### Communication Ports:

One full-duplex RS-232  
One USB 2.0

#### Annunciators:

g, lb, t, tn, kg, oz, battery level, PT, LT, gross, zero,  
unstable, net

#### Display:

Six 1 in (25 mm) tall, LCD digits

#### Keys/Buttons:

5 tactile buttons

#### Dimensions:

(L × W × H)  
8.50 × 3.17 × 5.06 in  
(215.8 × 80.5 × 128.5 mm)

#### Temperature:

Certified: 14 °F to 104 °F (-10 °C to 40 °C)  
Operating: 14 °F to 122 °F (-10 °C to 50 °C)

#### Rating/Material:

AA Battery: IP54, ABS  
NiMH Battery: IP66, ABS

#### Warranty:

Two-year limited

#### EMC Immunity:

10 V/m

#### Approvals:

NTEP 21-051 Class III/IIIL, 10,000 d  
Measurement Canada AM-6184