

NTEP Certified 1,000lb load cell shown.

65059 mild steel (50lb to 250lb)

Picture is a representation of actual product.

### Load Cell Approvals



### Order Information

Load Rating (Per Module)	Part #	Price
<b>Mild Steel Single Module (Includes Load Cell)</b>		
50 lb	17825	Consult
100 lb	17826	Consult
150 lb	17827	Consult
250 lb	17828	Consult
500 lb	17829	Consult
1,000 lb	17830	Consult
2,000 lb	17946	Consult
2,500 lb	17947	Consult
<b>Mild Steel 3-Module Kit</b>		
50 lb	18063	Consult
100 lb	18064	Consult
150 lb	18065	Consult
250 lb	18066	Consult
500 lb	18067	Consult
1,000 lb	18068	Consult
2,000 lb	30413	Consult
2,500 lb	30412	Consult
<b>Mild Steel 4-Module Kit</b>		
50 lb	18069	Consult
100 lb	18070	Consult
150 lb	18071	Consult
250 lb	18072	Consult
500 lb	18073	Consult
1,000 lb	18074	Consult
2,000 lb	30414	Consult
2,500 lb	30411	Consult

### Complete Kit Includes

- Three or four neoprene isolation/compression mounts with NTEP Certified load cells
  - 50 to 250 lb mild steel: 60040
  - 500 lb mild steel: 65023-500-0107
  - 1,000 to 2,500 lb mild steel: 65023A1K-5107
  - 500 lb stainless steel: 65023-500-0113
  - 1,000 to 2,500 lb stainless steel: 65023S1K-5113
- One JB4SS NEMA Type 4X stainless steel signal trim junction box
- 25 ft of hostile environment EL147HE SURVIVOR® load cell cable

### Standard Features

- Zinc plated, mild steel modules
- Lower weighing ranges from 50 to 500 lb per module
- Environmentally protected load cells
- Neoprene isolation/compression mounts allow for minor misalignment, thermal expansion and shock absorption
- Overload stop for 500 lb modules provides durability

### Applications

- Small tanks and hoppers
- Conveyor/In-motion weighing
- Small platform scales where minor shock loading may occur

# 65059

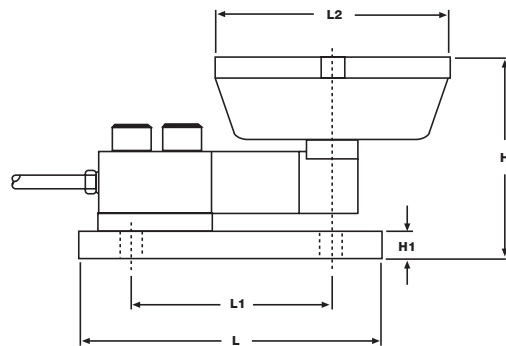
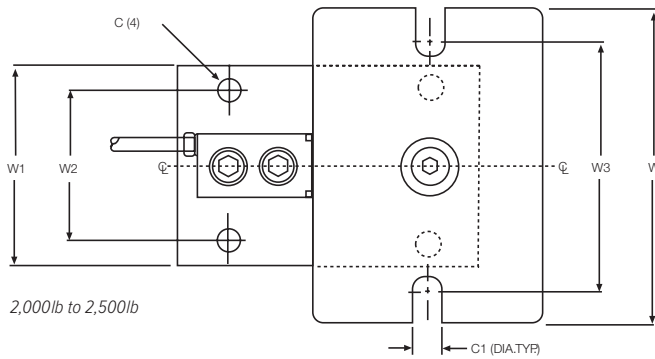
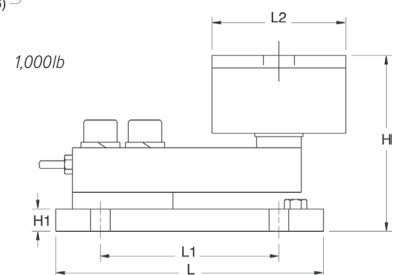
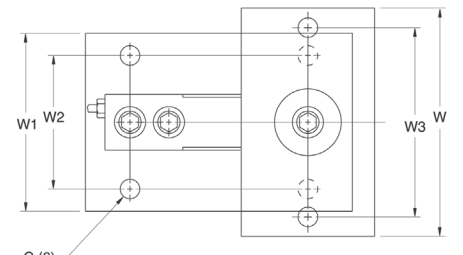
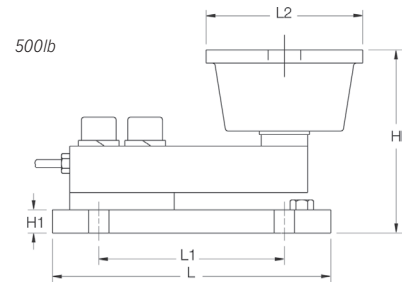
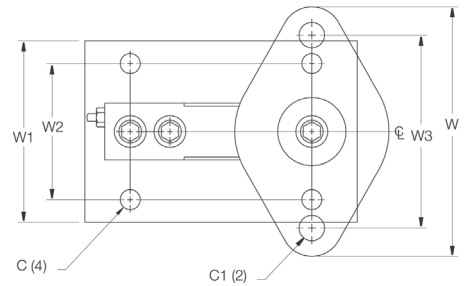
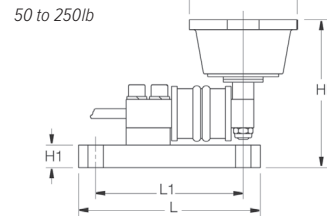
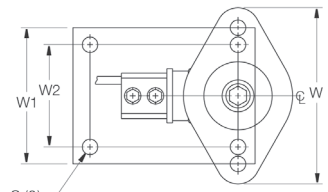
Mild Steel/Stainless Steel, Mini Tank Weighing Module, VPG® Sensortronics®

## Order Information

Load Rating (Per Module)	Part #	Price
<b>Stainless Steel Single Module (Includes Load Cell)</b>		
500 lb	<b>17950</b>	Consult
1,000 lb	<b>17951</b>	Consult
2,000 lb	<b>17952</b>	Consult
2,500 lb	<b>17953</b>	Consult
<b>Stainless Steel 3-Module Kit</b>		
500 lb	<b>30392</b>	Consult
1,000 lb	<b>30410</b>	Consult
2,000 lb	<b>30408</b>	Consult
2,500 lb	<b>30406</b>	Consult
<b>Stainless Steel 4-Module Kit</b>		
500 lb	<b>30391</b>	Consult
1,000 lb	<b>30409</b>	Consult
2,000 lb	<b>30407</b>	Consult
2,500 lb	<b>30405</b>	Consult

## Dimensions

Rated Capacity	C	C1	H	H1	L	L1	L2	W	W1	W2	W3
lb/in											
50 to 250	0.34	-	3.13	0.50	4.00	3.25	2.38	3.88	3.00	2.25	-
500	0.44	0.56	3.88	0.50	6.00	4.00	3.38	5.50	4.00	3.00	4.13
1,000	0.44	-	4.00	0.50	6.00	4.00	3.00	5.13	4.00	3.00	4.13
2,000 to 2,500	0.44	0.56	4.00	0.50	6.00	4.00	4.62	6.25	4.00	3.00	5.00



WEIGH MODULES