

INDICATORS

# 820i® Panel Mount Indicator/Controller

Main Assembly



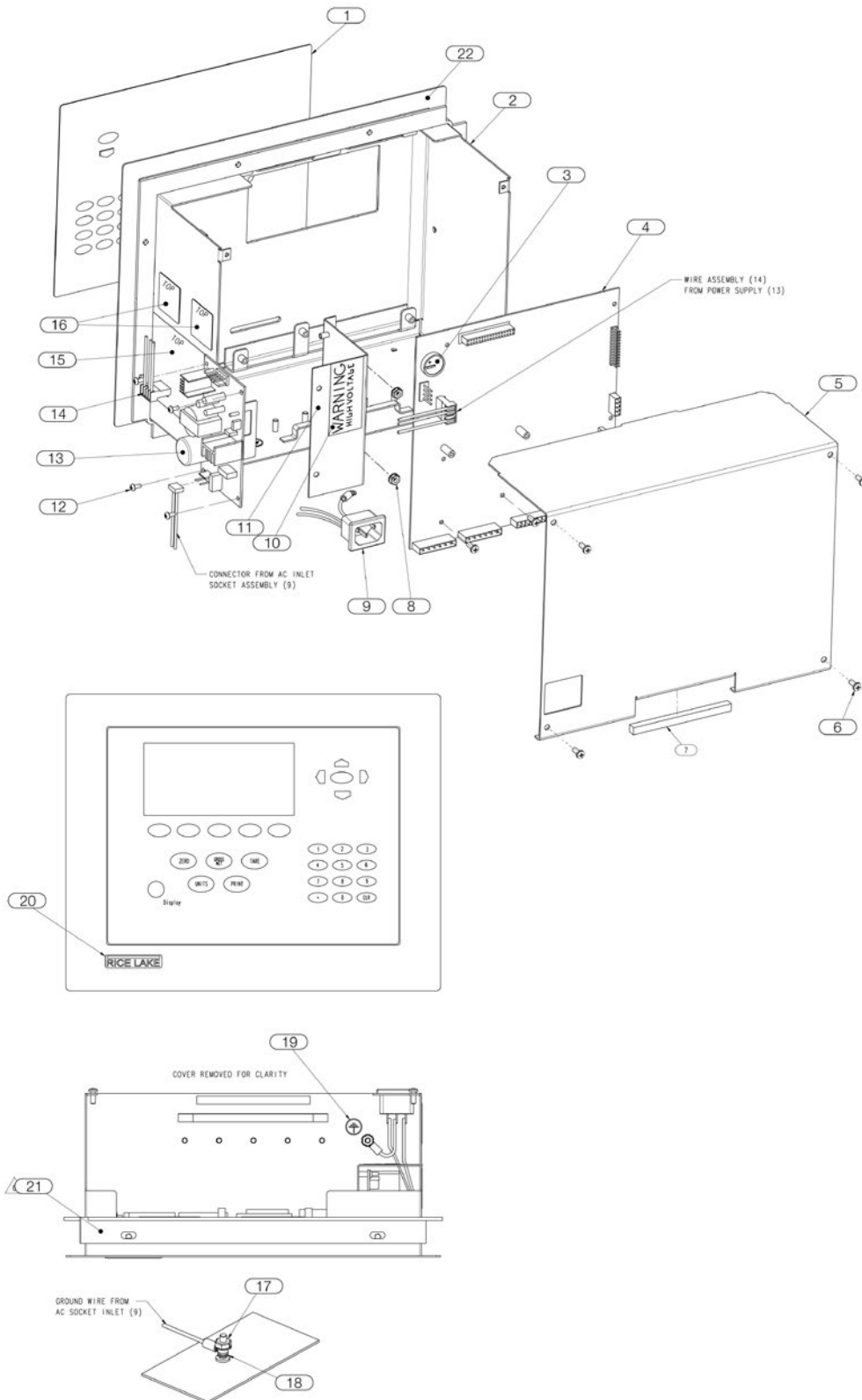
## Part Number/Price

Ref#	Part#	Description	Price
1	93247	Membrane switch overlay	Consult
2	94823	Stainless steel weldment enclosure	Consult
3	69291	3V coin lithium battery	Consult
4	102331	CPU/display board assembly (single channel)	Consult
	102333	CPU/display board assembly (dual channel)	Consult
	93246	Display, LCD module, transmissive, indoors (included on CPU)	Consult
	100758	Display, LCD module, transfective, outdoors	Consult
5	94824	820i panel mount cover	Consult
6	14839	MACH 6 - 32 NC x 1/4 screw	Consult
7	71698	Polyurethane foam strip	Consult
8	58248	6 - 32 NC hex nylon lock nut	Consult
9	97907	AC input 820i cable assembly	Consult
11	94392	25W power supply bracket	Consult
12	14822	MACH 4 - 40 NC x 1/4 screw	Consult
13	67613	Power supply VAC 25W	Consult
	132791	DC/DC converter 12-24 VDC, 25W	Consult
14	67796	Power supply cable assembly	Consult
17	14626	8 - 32 NC hex Nut, KEP	Consult
18	15134	Lock no 8 type A washer	Consult
21	71095	Clinching welded bracket	Consult
22	69144	Faceplate gasket	Consult
	15438	Power cord	Consult
	93018	Installation manual	Consult
	95304	820i panel mount instructions	Consult
	94436	Parts kit, 820i dual	Consult
	94435	Parts kit, 820i single	Consult
	67601	Digital I/O, 24-channel option	Consult
	67602	Analog output: selectable 0-10V, 0-20 mA option	Consult
	103138	Analog output dual channel 0-10V, 0-20mA option	Consult
	67604	Serial, dual channel option	Consult
	87697	Analog input and thermocouple option	Consult
	68541	DeviceNet™ interface option	Consult
	68539	Allen-Bradley™ Remote I/O interface option	Consult
	68540	Profibus™ DP interface option	Consult
	71986	Ethernet TCP/IP 10/100 Base-T module (internal) option	Consult
	87803	EtherNet/IP (for A-B PLC) option	Consult
<b>Components of Part #94435</b>			
	14626	8 - 32 NC hex Nut, KEP	Consult
	15133	No 8 type A lock washer	Consult
	15887	6-position terminal block	Consult
	53075	Ground cable shield clamp	Consult
	54206	MACH 6 - 32 NC x 3/8 screw	Consult
	71344	10-position screw connector J5 and J11	Consult
	71522	MACH 8 - 32 NC x 1/4 screw	Consult
	76513	4-position screw terminal connector J9	Consult
	76514	6-position screw terminal connector J10	Consult
	77925	Revolution II CD	Consult
	82425	MACH 10 - 32 NF x 1.50 screw	Consult
	94422	.50 x 4.68 capacity label	Consult

(See Diagram 820i-A)

# 820i® Panel Mount Indicator/Controller

Main Assembly



Indicators/Controllers

Diagram 820i-A