

920i® Deep Enclosure Indicator/Controller

Main Assembly

Part Number/Price

Ref#	Part#	Description	Price
	126285	Parts kit, 920i single	Consult
	126303	Parts kit, 920i dual	Consult
Components of Part# 126285 and 126303			
	14626	Nut, KEP, 8 - 32 NC	Consult
	14862	Machine 8 - 32 NC x 3/8" screw	Consult
	15133	Lock washers, no. 8, Type A	Consult
	15144	Nylon 1/4" x 1" x 1/16" washer	Consult
	15631	3" nylon cable tie	Consult
	15665	Reducing 1/2 NPT gland	Consult
	15887	6-position terminal block for load cell connection	Consult
	19538	Slotted black post only	Consult
	30623	Machine 8 - 32 NC x 7/16" screw	Consult
	42149	Rubber grommet bumper	Consult
	94422	Label, capacity .45 x 3.2	Consult
	53075	Ground cable shield clamp	Consult
	103610	Wing knob for tilt stand, internal thread	Consult
	77180	8-position screw terminal for J10 (Rev. H CPU)	Consult
	70599	6-position screw terminal connector for J2	Consult
	71125	3-position screw terminal connector for J11	Consult
	71126	4-position screw terminal connector for J9	Consult
	75062	Bonded sealing SS washer	Consult
	68403	Wing knobs with threaded post, old style	Consult
	83569	Clear protective overlay	Consult
	67887	Installation manual	Consult
	83810	920i deep installation instructions	Consult
1	82854	920i backplate gasket	Consult
2	14862	Machine 8 - 32 NC x 3/8" screw	Consult
3	82853	Enclosure deep backplate	Consult
	115118	Enclosure backplate for USB receptacles	Consult
5	75062	Bonded sealing stainless steel washer #8	Consult
8	164371	LCD display transmissive (indoor use) CCFL B/L	Consult
	186275	LCD display transmissive (indoor use) with LED B/L	Consult
	186276	LCD display transmissive (outdoor use) with LED B/L	Consult
	159946	CCFL backlight for display (type WRUS)	Consult
	187677	LED backlight for display (type WRUS, IQSS, ZARS)	Consult
9	67886	Male-FEM 4 - 4 NC standoff	Consult
10	68598	Protective lens	Consult
11	44676	Bonded sealing washer	Consult
12	42640	Machine 1/4" - 28 NF x 1" screw	Consult
13	67535	Interface board gasket	Consult
14	67530	Interface board plate	Consult
15	14845	Machine 6 - 32 NC x 3/8" screw	Consult
16	15626	Grip black PG9 cable	Consult
17	15628	1/2 NPT black Cord-grip	Consult
18	67795	Power cord assembly, 120VAC	Consult
18	69998	Power cord assembly, 230VAC Euro plug	Consult
19	68425	Cover fuse access plate	Consult
20	68621	Coverplate fuse gasket	Consult
21	69898	Washer, nylon #4	Consult
22	58248	Lock 6 - 32 NC hex nylon nut	Consult
23	14822	Machine 4 - 40 NC x 1/4" screw	Consult
24	66502	Membrane switch overlay	Consult
25	68216	Nameplate, Rice Lake	Consult
26	68662	Ribbon interface cable	Consult

(See Diagram 920i-A)



INDICATORS

920i® Deep Enclosure Indicator/Controller

Main Assembly

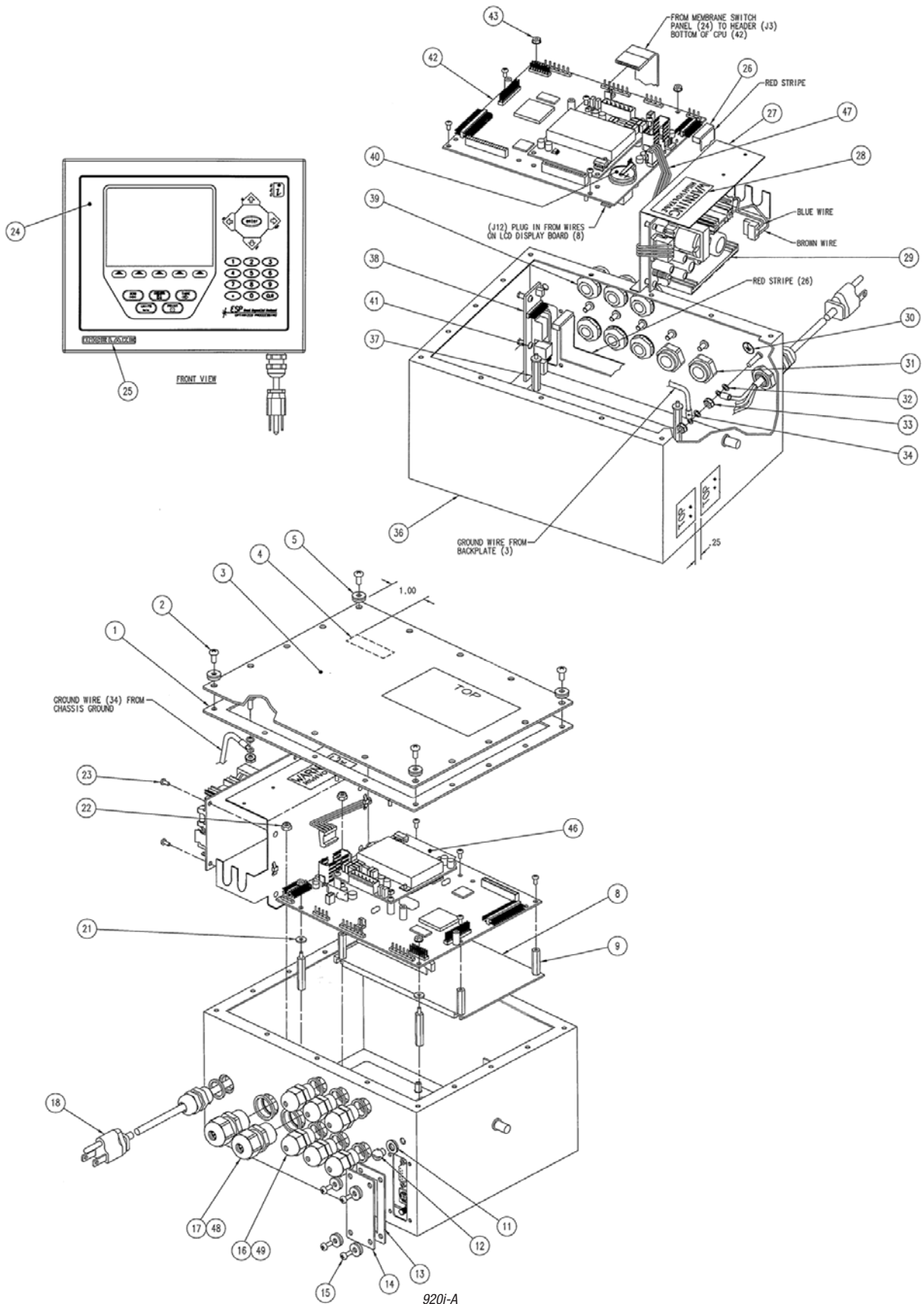
**Part Number/Price**

Ref#	Part#	Description	Price
27	82856	Power supply bracket	Consult
28	16861	Warning high label	Consult
29	71333	Power supply, VAC 65W	Consult
	132791	Power supply, 12-24 VDC, 25W	Consult
30	16892	Ground/earth label	Consult
31	15630	1/2 NPT black lock nut	Consult
32	15134	Lock no 8 type A washer	Consult
33	14626	KEP 8 - 32 NC hex nut	Consult
34	15601	Ground 6" with no. 8 wire	Consult
36	82852	920i deep enclosure	Consult
37	68661	Male-FEM 4 - 40 NC standoff	Consult
38	67869	Interface 920i board PS-2, DB-9	Consult
	111109	Interface board USB (requires Rev. L CPU)	Consult
39	15627	Black PCN9 lock nut	Consult
40	69290	Battery, 3V coin lithium	Consult
41	55708	Machine 4 - 40 NC x 3/8" screw	Consult
42	117930	CPU board green solder mask	Consult
	186272	CPU board blue solder mask	Consult
43	14618	KEP, 4 - 40 NC hex nut	Consult
45	71462	3.15 A time-lag TR5 fuse	Consult
46	68532	Single-channel A/D card	Consult
	68533	Dual-channel A/D card (shown in diagram 920i-D)	Consult
	87697	Analog input and thermocouple option	Consult
	67600	Memory, 1MB NV RAM option	Consult
	67601	Digital I/O, 24-channel option	Consult
	67602	Analog output: selectable 0-10V, 0-20 mA option	Consult
	103138	Analog output, dual channel 0-10VDC, 0-20 mA option	Consult
	67604	Serial, dual channel option	Consult
	67603	Pulse input, single channel option	Consult
	68541	DeviceNet™ interface option	Consult
	68539	Allen-Bradley® Remote I/O interface option	Consult
	68540	Profibus® DP interface option	Consult
	103136	Control net interface option	Consult
	87803	EtherNet/IP (for A-B PLC) option	Consult
	71986	Ethernet TCP/IP 10/100 Base-T module (internal) option	Consult
		71743	Option, 2-Slot Expansion Board, (Panel & Deep)
	69808	Board assembly, Expansion 2-Slot	Consult
	71758	Cable assembly, DC Power 9 in, CPU and Expansion	Consult
	71779	Cable assembly, Ribbon 2 inch	Consult
47	71430	65W power cable assembly	Consult
48	30376	Nylon 1/2 NPT seal ring	Consult
49	30375	Nylon seal ring	Consult

The LED backlight display can be used with green CPU board Rev N or older by replacing the power supply cable. Universal 186464 (AC) 186464 (DC); Deep universal 186278 (AC) 187603 (DC); Panel 186278 (AC) 187603 (DC); Wall 186760 (AC) 188345 (DC); Two-slot expansion for wall 188716 (AC) 189724 (DC); Two-slot expansion panel for deep universal 188717 (AC) 189725 (DC); Six-slot expansion for wall 188774 (AC).
(See Diagram 920i-A)

920i[®] Deep Enclosure Indicator/Controller

Main Assembly



Indicators/Controllers