

920i® Universal Indicator/Controller

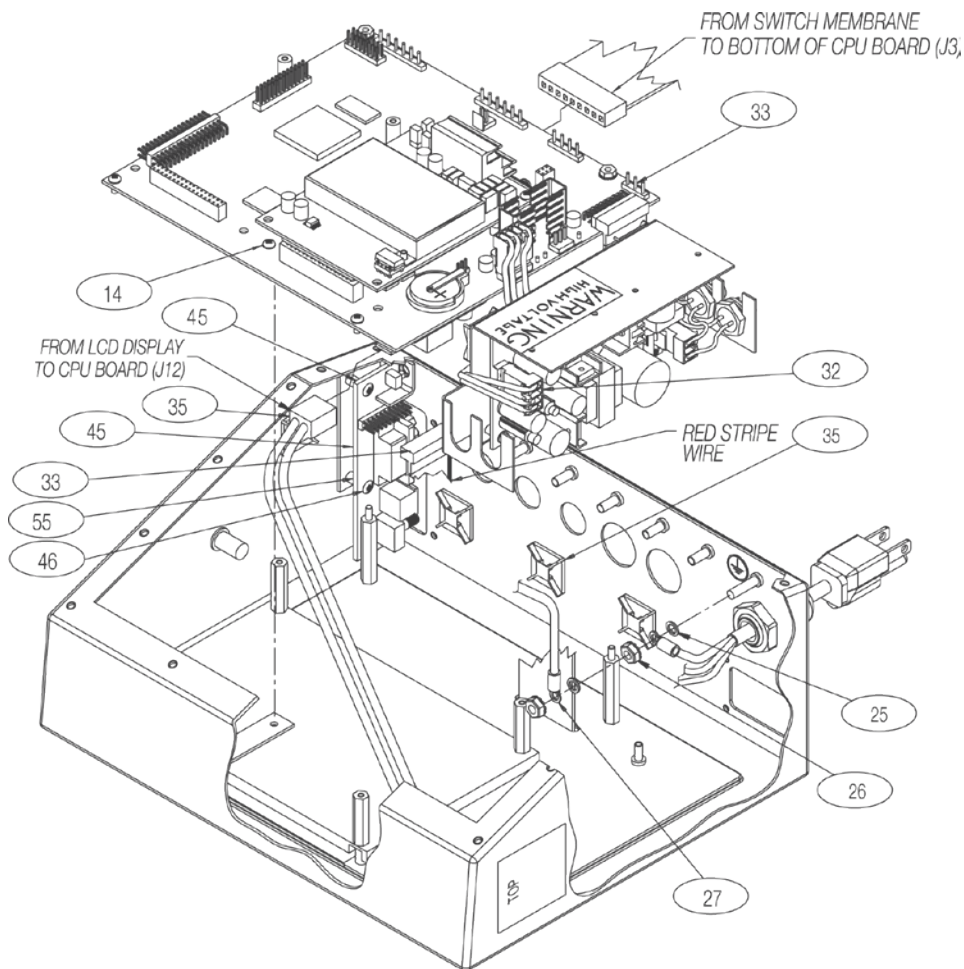
Power Supply

Part Number/Price

Ref#	Part#	Description	Price
14	14822	Machine screws, 4 - 40 NC x 1/4	Consult
25	15134	Lock washers, no. 8, type A	Consult
26	14626	Nut, KEP, 8 - 32 NC	Consult
27	45043	Ground wire, 4" with no. 8 eye connector	Consult
32	67796	Power supply cable assembly, to CPU board	Consult
32	186464	Power supply cables for display retrofit	Consult
33	68662	Ribbon cable to interface board universal	Consult
35	15650	Cable tie mounts, 3/4"	Consult
45	67869	Interface board PS2/DB-9	Consult
	111109	Interface board USB (requires Rev. L CPU)	Consult
46	14832	Machine screws, 4 - 40 NC x 3/8	Consult
54	70069	3V Lithium coin battery	Consult
55	69898	Nylon spacers	Consult



The LED backlight display can be used with green CPU board Rev N or older by replacing the power supply cable. Universal 186464 (AC) 186464 (DC); Deep universal 186278 (AC) 187603 (DC); Panel 186278 (AC) 187603 (DC); Wall 186760 (AC) 188345 (DC); Two-slot expansion for wall 188716 (AC) 189724 (DC); Two-slot expansion panel for deep universal 188717 (AC) 189725 (DC); Six-slot expansion for wall 188774 (AC).
(See Diagram 920i-E)



920i-E

Indicators/Controllers