

INDICATORS

920i® Wall Mount Indicator/Controller

Main Assembly



Part Number/Price

Ref#	Part#	Description	Price
	70599	6-position screw terminal for J2	Consult
	71125	3-position screw terminal for J11	Consult
	71126	4-position screw terminal for J9	Consult
	69782	2-slot expansion board	Consult
	69783	6-slot expansion board	Consult
	67887	Lit, manual	Consult
	69988	Lit, manual mount installation	Consult
1	68902	Enclosure, wall mount	Consult
	126585	Enclosure, wall mount with cutouts for USB receptacles	Consult
2	68598	Protective lens	Consult
3	164371	LCD display transmissive (indoor use) CCFL B/L	Consult
	186275	LCD display transmissive (indoor use) with LED B/L	Consult
	186276	LCD display transmissive (outdoor use) with LED B/L	Consult
	159946	CCFL backlight for display (type WRUS)	Consult
	187677	LED backlight for display (type WRUS, IQSS, ZARS)	Consult
4	15134	Lock washers, no. 8, Type A	Consult
5	14626	Nut, KEP, 8 - 32 NC	Consult
6	15601	Ground wire, 6" with no. 8 eye connector	Consult
9	85203	Power cord assembly, 230VAC European units	Consult
	85202	Power cord assembly, 120VAC	Consult
10	68425	Fuse access coverplate	Consult
11	14845	Machine screws, 6 - 32 NC x 3/8 Phillips	Consult
12	45042	Sealing washers	Consult
13	14822	Machine screws, 4 - 40 NC x 1/4	Consult
14	69538	Power supply bracket	Consult
15	14621	Nut, KEP, 6 - 32 NC	Consult
16	15630	Lock nuts for 1/2 NPT Cord-grips	Consult
17	67530	Interface board connector plate	Consult
18	67535	Interface board gasket	Consult
19	67869	Interface board PS2, DB-9	Consult
	111109	Interface board USB (requires Rev. L CPU)	Consult
20	55708	Screw, mach 4-40 NC x .38	Consult
21	14875	Machine screws, 10 - 32 NF x 3/8 Phillips	Consult
22	15140	Lock washers, no. 10 Type A	Consult
23	46192	Ribbon cable clamps	Consult
24	68661	Standoffs, long	Consult
25	69898	Nylon spacers	Consult
26	14618	Nut, KEP, 4 - 40 NC	Consult
27	15631	Cable tie, 3 in nylon	Consult

Indicators/Controllers

920i® Wall Mount Indicator/Controller

Main Assembly

Part Number/Price

Ref#	Part#	Description	Price
28	71431	Power supply cable assembly, to CPU board	Consult
29	71436	Ribbon cable to interface board	Consult
30	67886	Standoffs, short	Consult
31	71739	Clip, clinching enclosure	Consult
37	42640	Screw, mach 1/4-28 NF x .25	Consult
38	59250	Washer	Consult
39	30376	Seal ring, nylon 1/2 NPT	Consult
40	15628	Cord grip, 1/2 NPT black	Consult
41	71455	Screw, mach 1/4-28 NF x 3/4	Consult
42	71447	Screw, mach 1/4-28 NF x .75	Consult
44	71333	Power supply, VAC 65W	Consult
45	68216	Nameplate, Rice Lake	Consult
46	69290	Battery, 3V coin lithium	Consult
47	67610	Card, A/D single channel	Consult
48	68724	Cover gasket	Consult
49	66502	Overlay, membrane switch	Consult
50	117930	CPU board green solder mask	Consult
50	186272	CPU board blue solder mask	Consult
51	15650	Cable tie mounts, 3/4"	Consult
52	16861	High voltage warning label	Consult
53	16892	Ground/earth label	Consult
54	68621	Fuse access coverplate gasket	Consult
55	68903	Back panel	Consult
60	88733	Vent, breather sealed	Consult
61	88734	Nut, breather vent	Consult
	69898	Washer, nylon #4	Consult
	159946	Backlight for displays with suffix WRUS	Consult

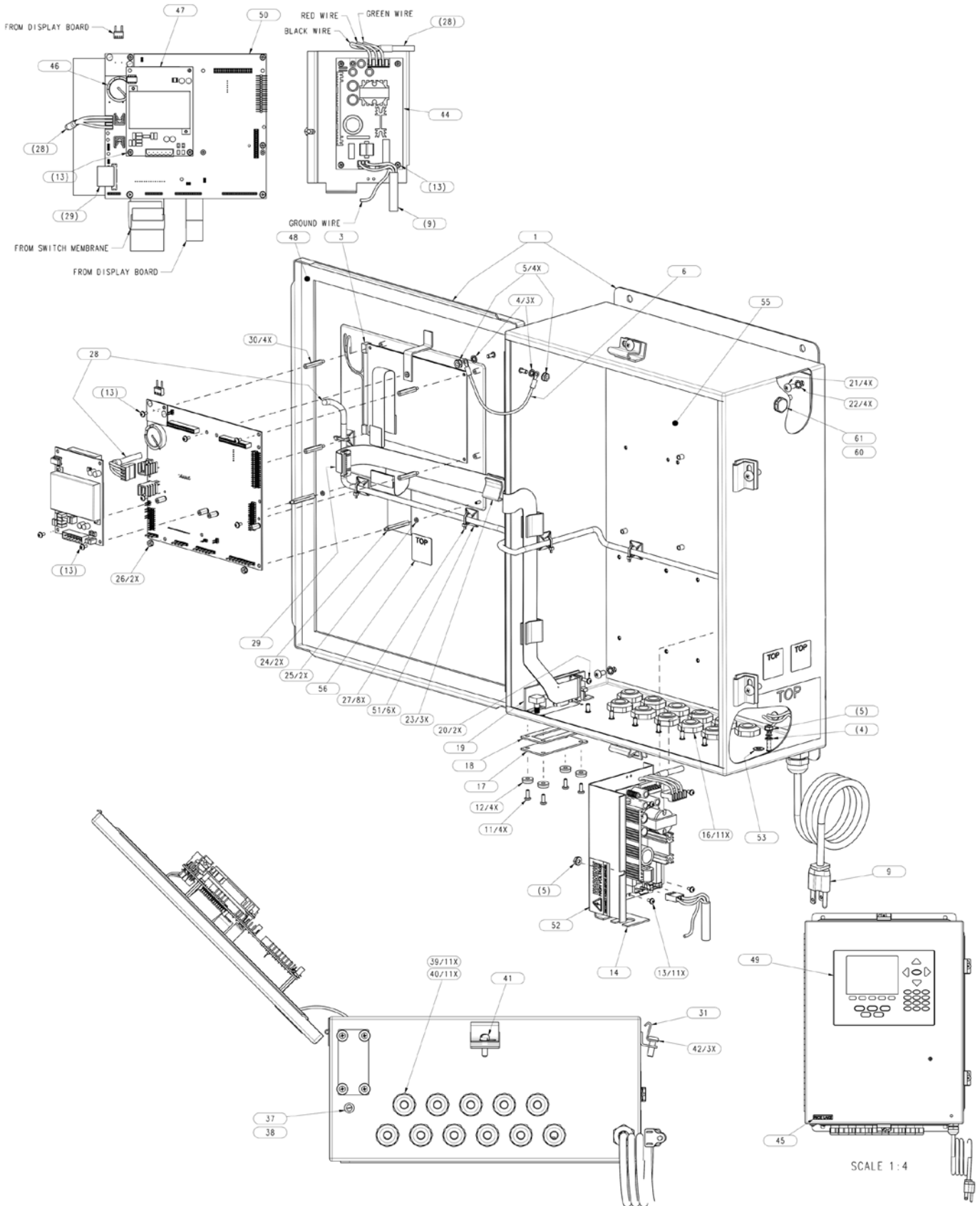
The LED backlight display can be used with green CPU board Rev N or older by replacing the power supply cable. Universal 186464 (AC) 186464 (DC); Deep universal 186278 (AC) 187603 (DC); Panel 186278 (AC) 187603 (DC); Wall 186760 (AC) 188345 (DC); Two-slot expansion for wall 188716 (AC) 189724 (DC); Two-slot expansion panel for deep universal 188717 (AC) 189725 (DC); Six-slot expansion for wall 188774 (AC).
(See Diagram 920i-J)



INDICATORS

920i® Wall Mount Indicator/Controller

Main Assembly



Indicators/Controllers

920i-J