

# Astra with Pole Display



## Part Number/Price

Ref#	Part#	Description	Price
53	66380	Cover, printer door	Consult
54	66381	Cover, front, printhead	Consult
55	66382	Sticker, label roll loading	Consult
56	68946	Leg, adjusting, 89-3059-09	Consult
57	66383	Hinge, printer door	Consult
58	68947	Case, front, 89-3054-01	Consult
59	68948	PWB, display, 89-3064-08	Consult
60	68949	Case, rear, 89-3055-04	Consult
61	68950	Pole stand, 89-3310-04	Consult
62	68945	Harness, S2, display, 89-3105-07	Consult
63	45128	Screw, sealing, brass, 00-6609-00	Consult
64	66388	Battery	Consult
65	66390	Clamp, battery	Consult
66	44474	Screw, sealing, nylon, 89-2025-09	Consult
67	66391	Bracket, case, connector	Consult
68	66392	Standoff, main board	Consult
69	66393	Standoff, overload	Consult
70	66394	Screw, sealing, brass, self tapping	Consult
71	68953	Base, base plate, 89-2688-53	Consult
72	77975	Power supply, switching, SWD100P 102-9575-06	Consult
—	77889	Fuse, power supply, 5A, 250V, 5x20	Consult
73	66396	Cable, C3, power, in from switch	Consult
74	47073	Harness, S2, PS, out to CPU, 47-3677-19	Consult
75	66397	Socket assembly, C4, power cord	Consult
76	66398	Switch, power	Consult
77	15438	Power cord	Consult
78	66399	Board, A/D, PK-219	Consult
79	66400	Board, main, PK-220A	Consult
80	44425	Level, Unit, 89-0914-02	Consult
81	Consult	Sticker, caution	Consult
82	66419	Standoff, DC/DC converter, 89-2859-08	Consult
83	66420	Standoff, mainboard, 89-2677-07	Consult
84	66401	Clip retainer, printhead, 89-2973-28	Consult
85	66402	Rubber, plate support, solid, 89-3006-01	Consult
86	68952	Bracket, pole, 89-3056-08	Consult
87	68951	Cover, bracket, 89-3321-05	Consult
89	45174	Push rivet, 36-3442-05	Consult
90	66344	Sheet, display panel, 89-2843-18	Consult
94	Consult	UL sticker, 89-2798-04	Consult
96	Consult	Plate A, module, 89-3414-08	Consult
97	42714	Screw, pan head tapping, M4x8	Consult
98	42735	Seal, with wire	Consult

\* Same as Ishida 3000 Series

(Diagram Astra-B)

# Astra with Pole Display

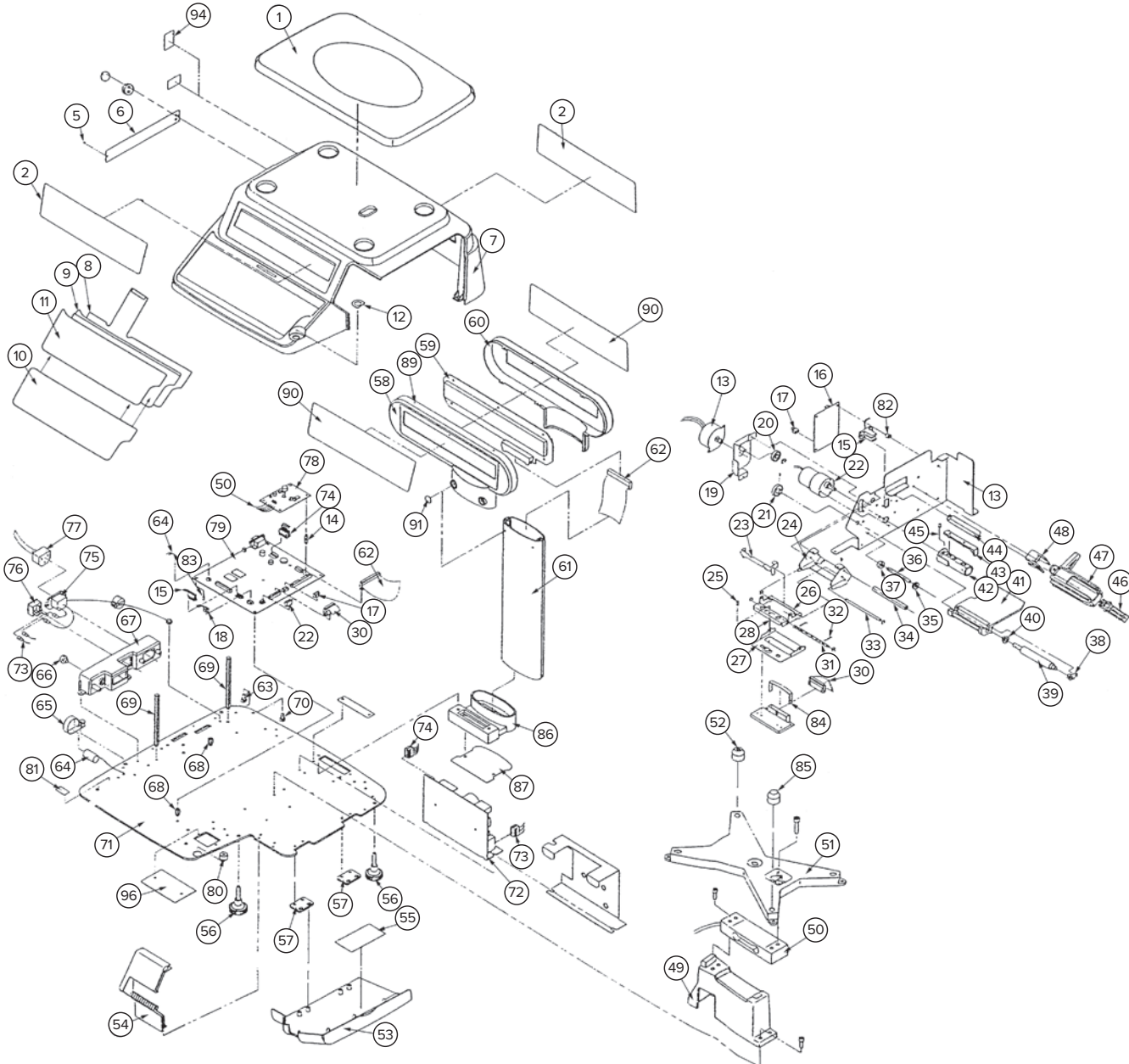


Diagram Astra-B

Parts not listed are no longer available. Some parts listed may not be available.

An ISO 9001 registered company ©2021 Rice Lake Weighing Systems 09/21 Prices and specifications subject to change without notice. Visit [ricelake.com](http://ricelake.com) for current prices.