

# Astra with Pole

Main Unit



## Part Number/Price

Ref#	Part#	Description	Price
1	<b>83777</b>	Platter	Consult
	<b>83781</b>	Backstop for platter	Consult
2	<b>68944</b>	Filter, display panel	Consult
5	<b>42734</b>	Push rivet, 00-4761-06	Consult
6	<b>66345</b>	Nameplate, specification	Consult
7	<b>66346</b>	Case, upper	Consult
8	<b>66347</b>	Keyboard, membrane, contacts only	Consult
9	<b>66348</b>	Sheet, keyboard, programming keyboard overlay adhesive back	Consult
10	<b>66349</b>	Keysheet, operator, insert	Consult
11	<b>66350</b>	Keysheet, clear with adhesive	Consult
12	<b>66351</b>	Sticker, level, bubble	Consult
13	<b>66352</b>	Frame, printer	Consult
14	<b>66353</b>	Standoff, A/D support	Consult
15	<b>66354</b>	Sensor, label gap	Consult
16	<b>66355</b>	DC/DC converter	Consult
17	<b>66356</b>	Harness, S2, DC/DC	Consult
18	<b>66357</b>	Motor, stepping print roller drive	Consult
19	<b>66358</b>	Bracket, stepping, motor	Consult
20	<b>66359</b>	Gear, stepping motor	Consult
21	<b>66360</b>	Gear, print roller	Consult
22	<b>66361</b>	Motor, label rewind	Consult
23	<b>66362</b>	Bracket, printhead release	Consult
24	<b>66363</b>	Bracket, frame, printhead	Consult
25	<b>45145</b>	Step, screw, pan, 36-0942-00	Consult
26	<b>66364</b>	Bracket, printhead lock	Consult
27	<b>66365</b>	Bracket, printhead	Consult
28	<b>45203</b>	Spring, coil, compressive, 00-6375-09	Consult
29	<b>45237*</b>	Printhead, thermal, 36-2636-16	Consult
—	<b>48239</b>	Screw, button head, M3x6, printhead mount	Consult
30	<b>66366</b>	Cable, printhead	Consult
31	<b>45222</b>	Shaft, lock, 49-6373-12	Consult
32	<b>45206</b>	Spring, coil, tension	Consult
33	<b>45221</b>	Shaft, fulcrum, 00-6168-04	Consult
34	<b>45188</b>	Threaded rod, round, FF, 36-2507-00	Consult
35	<b>45201</b>	Guide, label, outside, 20-2507-00	Consult
36	<b>45223</b>	Threaded rod, round, FF, 00-6173-03	Consult
37	<b>66367</b>	Guide, label, inside	Consult
38	<b>66368</b>	Bushing, right, print roller	Consult
39	<b>66369</b>	Roller, printer	Consult
40	<b>66370</b>	Bushing, left, print roller	Consult
41	<b>66371</b>	Plate, label	Consult
42/43	<b>105437</b>	Label take-up kit, reel and lever (without screws)	Consult
44	<b>66374</b>	Label press	Consult
45	<b>66375</b>	Screw, set screw, M3x6	Consult
46	<b>66376</b>	Guide, label lever	Consult
47	<b>66377</b>	Reel, label supply	Consult
48	<b>66378</b>	Reel, label supply holder	Consult
49	<b>66379</b>	Bracket, load cell	Consult
50	<b>44414 †</b>	Load cell, C2G1-25K, 89-0643-03	Consult
51	<b>44410</b>	Platter support, 89-1884-08	Consult
52	<b>44406</b>	Rubber, platter support, 89-1631-11	Consult

\* Same as Ishida 3000 Series

† Same as Ishida Nova-II (30 lb)

(See Diagram Astra-B)

Discontinued Scales

# Astra with Pole

Main Unit

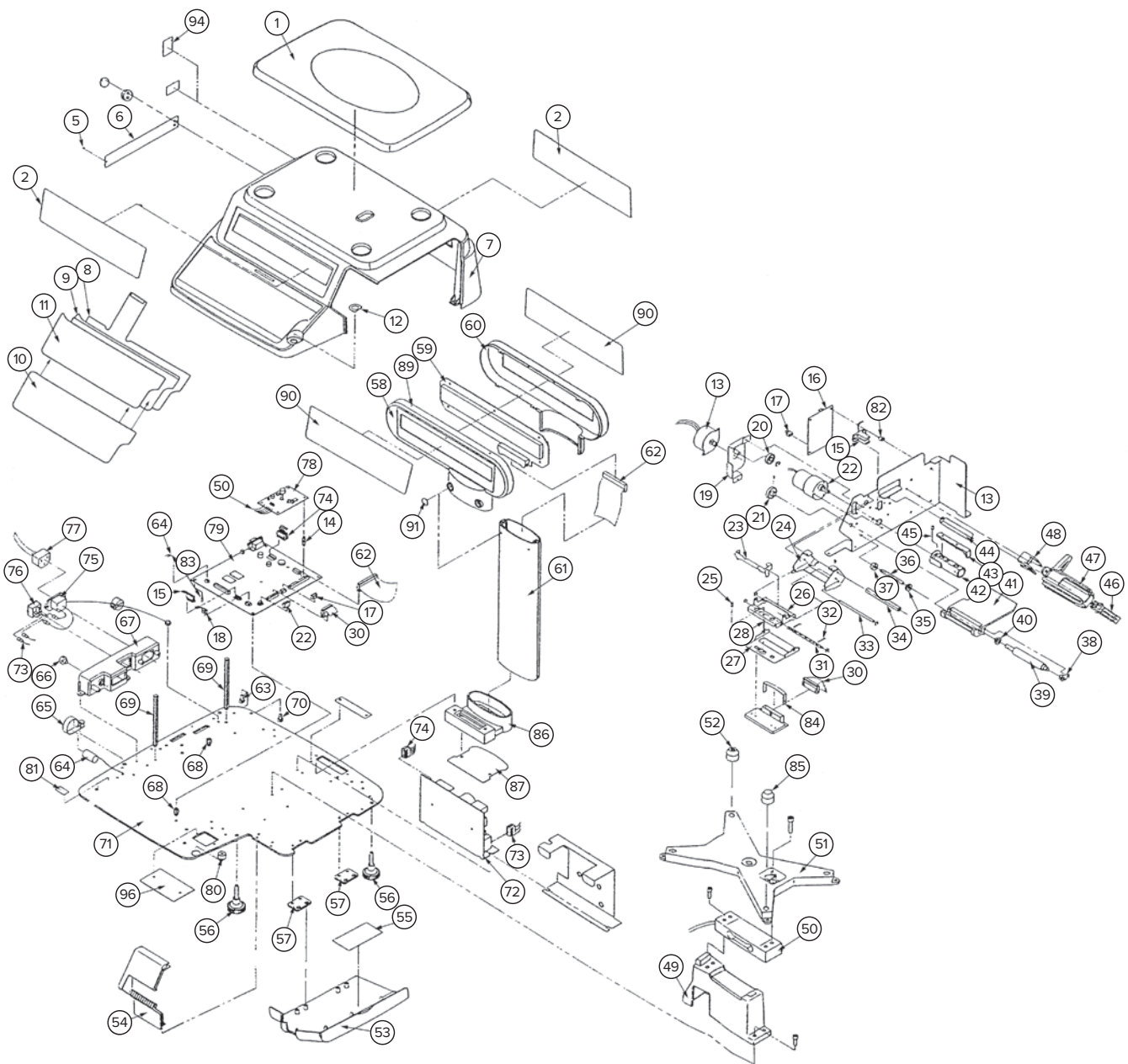


Diagram Astra-B

Parts not listed are no longer available. Some parts listed may not be available.  
 An ISO 9001 registered company ©2021 Rice Lake Weighing Systems 09/21 Prices and specifications subject to change without notice. Visit [ricelake.com](http://ricelake.com) for current prices.