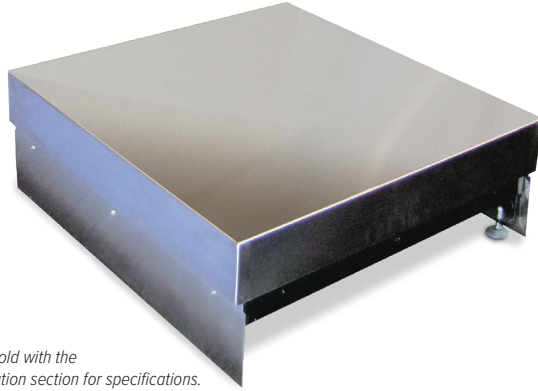


BenchMark® HD-1 Aviation

Heavy Duty Bench Scale

BENCH SCALES



*Ideal for aviation weighing.
A complete system can be sold with the
Tracer® AV2. Reference Aviation section for specifications.*

Approvals



Measurement
Canada
Approved



Part Number/Price

Part #	Capacity	Platform Dimensions	Price
Consult	500 lb (225 kg)	W × D × 12 in	Consult

*Note: Maximum size is up to 36in × 36in, height is always 12in
W × D supplied by customer*

Standard Features

- Heavy-duty scale designed mild steel base construction with 304 stainless steel cover
- Polyurethane rubber leveling feet with stainless steel stems
- Load cell comes standard with DB-9 connector for connecting to Tracer AV2
- Front and back kick plates

Specifications

Load Cell, NTEP Certified:
IP67 aluminum, environmentally sealed

Output Impedance:
350 ohm

Maximum Overload:
200%

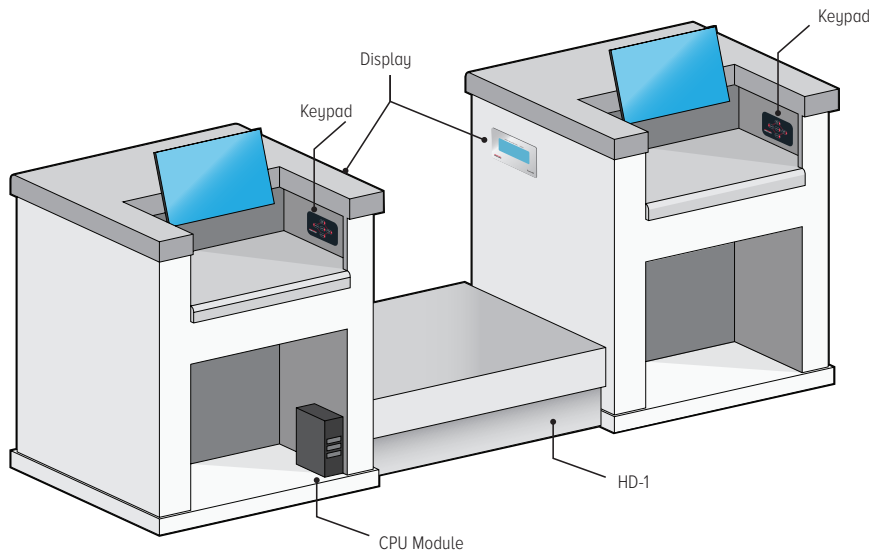
Overload Protection:
Five-point, independently adjusted

Cable Length:
10 ft (3 m)

Temperature:
Compensated:
14 °F to 104 °F (-10 °C to 40 °C)

Warranty:
Two-year limited

Approvals:
NTEP 06-010, Class III 5,000 d
Measurement Canada AM-5625
Load cell is cFMus approved



Baggage weighing system with Benchmark HD-1 and Tracer AV2Dual LCD Panel Mount Display, Dual keypad

BenchMark® HD-1 Aviation

Heavy Duty Bench Scale

BENCH SCALES

