

## CAST IRON / AVOIRDUPOIS GRIP-HANDLE AND NESTING SLAB

RANGE: 3,000 lb – 1 lb

## ASTM

## Class 6

Grip-handle

Weight	Part #	Length	Width	Height	Slot Width	Slot Depth*	Price	Optional Certificate	
								Accredited	Consult
3,000 lb	12872	20-3/4 in (527 mm)	20-3/4 in (527 mm)	29 in (737 mm)	3-1/2 in (89 mm)	2-3/4 in (70 mm)	Consult		Consult
2,500 lb	12854	20-3/4 in (527 mm)	20-3/4 in (527 mm)	24-3/4 in (629 mm)	3-31/32 in (101 mm)	2-3/4 in (70 mm)	Consult		Consult
2,000 lb	12868	20-3/4 in (527 mm)	20-3/4 in (527 mm)	19-1/2 in (495 mm)	3-1/2 in (89 mm)	2-3/4 in (70 mm)	Consult		Consult
1,500 lb	12864	15-1/8 in (384 mm)	15-1/8 in (384 mm)	26-7/8 in (683 mm)	2-1/2 in (64 mm)	2-1/4 in (57 mm)	Consult		Consult
1,250 lb	12858	15 in (381 mm)	15 in (381 mm)	23-3/4 in (603 mm)	2-1/2 in (64 mm)	2-1/4 in (57 mm)	Consult		Consult
1,000 lb	12850	15-1/2 in (394 mm)	15 in (381 mm)	18-11/16 in (478 mm)	2-3/4 in (70 mm)	2-29/32 in (74 mm)	Consult		Consult
500 lb	12844	12 in (305 mm)	11-1/2 in (292 mm)	15-3/4 in (400 mm)	2-1/2 in (64 mm)	1-29/32 in (48 mm)	Consult		Consult
250 lb	12892	9-3/4 in (248 mm)	9-3/4 in (248 mm)	12 in (305 mm)	2-1/2 in (64 mm)	2 in (51 mm)	Consult		Consult
200 lb	12890	9-3/4 in (248 mm)	9-3/4 in (248 mm)	10 in (254 mm)	2-1/2 in (64 mm)	2 in (51 mm)	Consult		Consult
100 lb	12860	7 in (178 mm)	9-1/8 in (232 mm)	7-7/8 in (200 mm)	4-1/2 in (114 mm)	1-1/2 in (38 mm)	Consult		Consult
50 lb	12839	5-1/2 in (140 mm)	7-29/32 in (201 mm)	6-9/16 in (167 mm)	4-1/2 in (114 mm)	1-21/32 in (42 mm)	Consult		Consult
30 lb	12878	4-29/32 in (125 mm)	8-1/4 in (210 mm)	4-1/2 in (114 mm)	4-15/32 in (114 mm)	31/32 in (25 mm)	Consult		Consult
25 lb	12833	4-1/2 in (114 mm)	6-1/2 in (165 mm)	4-15/16 in (125 mm)	3-5/8 in (92 mm)	31/32 in (25 mm)	Consult		Consult
20 lb	12870	4-15/32 in (114 mm)	5-3/4 in (146 mm)	5-3/32 in (129 mm)	3-31/32 in (101 mm)	1-5/32 in (29 mm)	Consult		Consult

## Class 7

## Optional Certificate

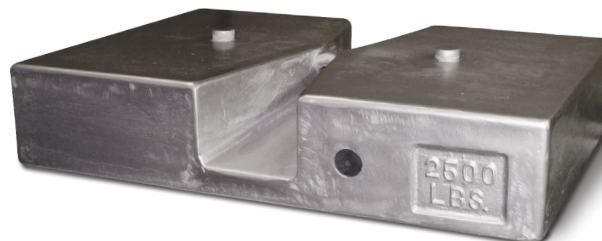
Weight	Part #	Length	Width	Height	Price	Optional Certificate	
						Accredited	Consult
10 lb	12828	3-1/4 in (83 mm)	5 in (127 mm)	4-1/32 in (102 mm)	Consult		Consult
5 lb	12823	2-9/16 in (65 mm)	4 in (102 mm)	3-7/32 in (82 mm)	Consult		Consult
2 lb	12874	2-1/8 in (54 mm)	3 in (76 mm)	1-3/4 in (45 mm)	Consult		Consult
1 lb	12876	1-11/16 in (43 mm)	2-1/2 in (64 mm)	1-13/32 in (38 mm)	Consult		Consult

## Class 6

Nesting Slab

Weight	Part #	Length	Width	Height	Slot Width	Slot Depth*	Price	Optional Certificate	
								Accredited	Consult
2,500 lb	12860	30 in (762 mm)	42 in (1067 mm)	8-1/4 in (210 mm)	2 in (51 mm)	2-1/4 in (57 mm)	Consult		Consult

\* Slot depth refers to distance between lifting bars and castings.



PN 12860 Nesting Slab



PN 12839 Grip-handle

## Accessories

Description	Part #	Price
Statement of Accuracy	36092	Consult
Serial number	25836	Consult