

CB-3 Concrete Batch Controller

Multi-Scale Automated Batching System



(Note: Factory field installation required, minimum of three days on-site)

Standard Features

- One aggregate and one cement scale, water scale is standard for P/N 177747
- Manual override controls
- Web server
- 128 GB data storage
- Material usage by day/week/month/year and inventory on-hand with reporting
- Automatic aeration control for cement silos and weigh hoppers
- Multiple freefall values per material
- Split batching for loads larger than plant capacity with pre-weighing next batch
- Automatic dust collection outputs
- Order-based batching
- Units: US standard or metric (SI) operation
- Aggregate conveyor control
- Loss-in-weight aggregate dispensing
- Three dual-speed or six single-speed aggregates
- Two dual-speed or four single-speed cements
- Weighed water with water reservoir (P/N 177747)
- Up to eight auxiliary manual controls
- Mixer controls for central mix block or precast plants
- Ethernet TCP/IP
- Up to six admixture
- Multi-user interface
- Dual moisture probe interface supports 4-20 mA

CONCRETE BATCH CONTROLLERS

Options

- Monitor
- Keyboard
- USB hub (4-port)
- USB Wi-Fi dongle
- Mouse
- Additional four admixture control system
- Portable batch plant system
- Control panel for remote batching
- Customized batch ticket printing

Specifications

Model:

B&R APC2100

Processor Type:

Intel Atom® E3845

Quad core

Data Storage Type:

Industrial CFast card

Data Storage Capacity:

128 GB

Interfaces:

Four USB

Two Ethernet TCP/IP

Monitor Output:

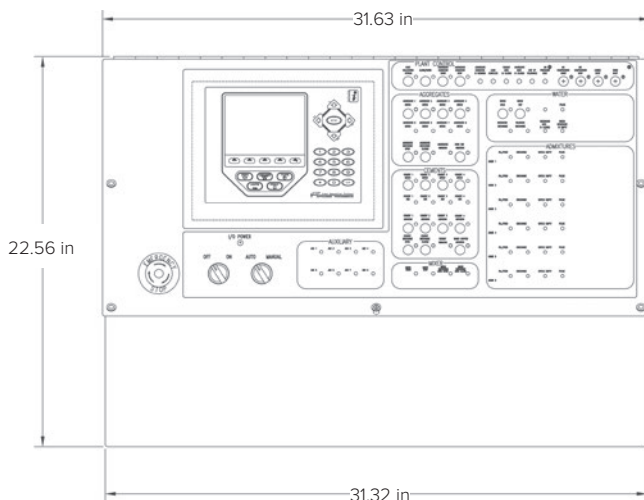
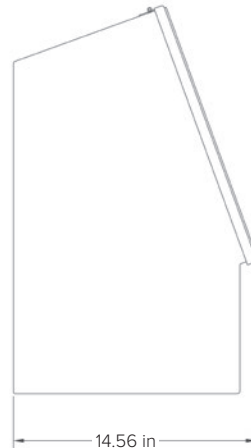
One SDL/DVI

Operating System:

Linux Ubuntu

Voltage:

24 VDC



920i® Specifications

Power:

AC voltages: 100 to 240 VAC

Frequency: 50/60 Hz

DC voltages: 12 to 24 VDC

Power Consumption:

AC: 25W (universal) or 65W (others)

DC: 25W for all models

Excitation Voltage:

10 VDC (+/- 5 VDC)

16 × 350 ohm or 32 × 700 ohm load cells

per A/D card

Analog Signal Input Range:

-45 mV to +45 mV

Analog Signal Sensitivity:

0.3 μV/graduation minimum at 7.5 Hz

1.0 μV/graduation recommended

A/D Sample Rate:

7.5 to 960 Hz, software selectable

Resolution:

Internal: 8,000,000 counts

Display: 1,000,000

System Linearity:

± 0.01% full scale

Digital I/O:

Six I/O channels on CPU board;

Optional 24-channel I/O expansion boards

Communication Ports:

Four ports on CPU board support up to 115,200bps

Port 1: Full duplex RS-232

Port 2: RS-232 with CTS/RTS; PS/2 keyboard

interface or USB type A and B connectors

Port 3: Full duplex RS-232, 20mA

Port 4: Full duplex RS-232, 2-wire RS-485, 20mA

Optional dual-channel serial expansion boards

Channel A: RS-232, RS-485, 20 mA

Channel B: RS-232, 20 mA

Display:

(W × H)

4.6 × 3.4 in (116 × 86 mm)

320 × 240 pixel

LCD module with adjustable contrast

Transmissive display

Transflective display (optional)

Keys/Buttons:

27-key membrane panel, tactile feel, PS/2

or USB port for external keyboard connection

Temperature Range:

Certified: 14 °F to 104 °F (-10 °C to 40 °C)

Operating: 14 °F to 122 °F (-10 °C to 50 °C)

Rating/Material:

NEMA Type 4X, Type 12, IP66

Stainless steel

Weight:

Universal enclosure: 9.5 lb (4.3 kg)

Wall mount enclosure: 23.0 lb (10.4 kg)

Panel mount enclosure: 8.5 lb (3.9 kg)

Deep universal: 11 lb (5.0 kg)

Warranty:

Two-year limited

EMC Immunity:

10 V/m

Approvals:

NTEP CC 01-088, Class III/IIIL 10,000d

Measurement Canada AM-5426,

Class III/IIIL 10,000d

OIML R76/2006-A-GB1-19.08

EU Test Certificate TC11584

UL/cUL Listed (Universal, Deep Universal

and Wall Mount)

UL/cUL Recognized (Panel Mount)

UL/cUL Listed 508A (custom Wall Mount)

CE Marked

CB-3 Concrete Batch Controller

Multi-Scale Automated Batching System with PC Program

Part Number/Price

Part#	Description	Est. Weight	Price
177746 *	CB-3 concrete batching controller, metered water, PC included	180 lb	Consult
177747 *	CB-3 concrete batching controller, weighed water, PC included	180 lb	Consult
FLD-INSTALL	Factory field installation required (minimum 3 days on site)	—	Consult per day
FLD-INSTALLSA	Factory field installation, Saturday	—	Consult
FLD-INSTALLSU	Factory field installation, Sunday	—	Consult

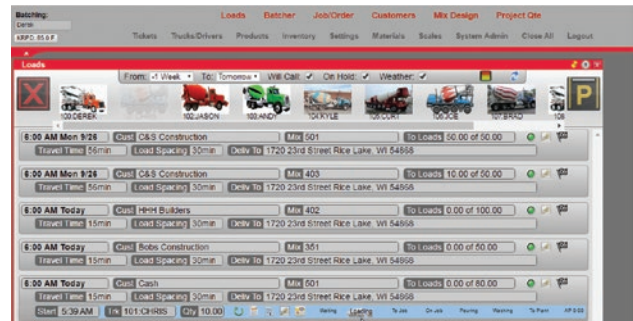
Options/Accessories

Part #	Description	Price
175877	Upgrade kit CB-2 to CB-3, PC included	Consult
179209	Accessory kit (includes monitor, keyboard, USB hub and mouse)	Consult
179210	Monitor, Acer	Consult
179211	Keyboard, Microsoft	Consult
179212	Mouse, Microsoft	Consult
185667	USB Hub	Consult
186277	Wireless USB adapter WI-FI	Consult
196700	4 Additional Admix controller	Consult

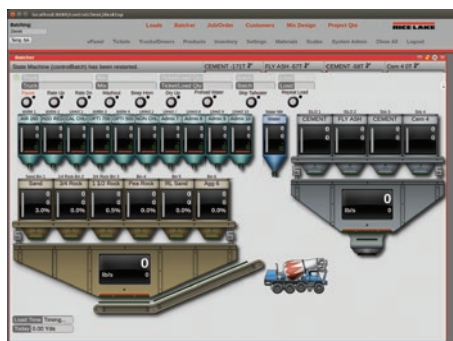
* Completed questionnaire required prior to ordering this system. Questionnaire available at www.ricelake.com/resources/product-questionnaires



CB-3 Ticket Output



CB-3 Truck Monitoring Screen



CB-3 Batcher Screen

CONCRETE BATCH CONTROLLERS