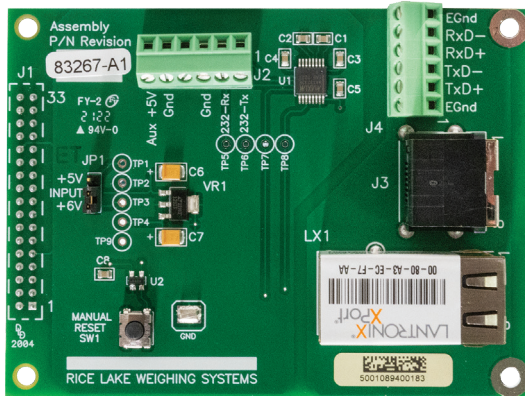


Ethernet TCP/IP Interface

720i™/920i®



PN 71986

Standard Features

- Supports any serial devices with seven or eight data bits requiring Ethernet access
- Compact size for internal installation in 720i and 920i indicators
- Can be used in other applications requiring five-volt power supplied
- 10/100 megabyte through RJ45 connector or wireless option
- HTTP, serial, telnet and SNMP management

Specifications

Power:

5 VDC, 250 mA

Supported Protocols:

ARP, UDP, TCP, Telnet, SNMP, ICMP, HTTP, BOOTP, DHCP and TFTP

Network Interface:

Ethernet: RJ-45 (10/100 Base-T) or AUI

Serial Line Formats:

Characters: 7 or 8 data bits
 Stop bits: 1 or 2
 Parity: odd, even, none

Data Rates:

Single port, 300 bps to 115.2 Kbps default 9,600

Dimensions:

2.00 × 1.90 × 0.75 in
 (52 × 49 × 19 mm)

Temperature Range:

41 °F to 122 °F (5 °C to 50 °C)

Part Number/Price

Part #	Description	Est. Weight	Price
71986	Ethernet TCP/IP interface for 720i/920i indicators	3 lb	Consult
206271	Wireless Ethernet TCP/IP interface for 720i/920i indicators	3 lb	Consult
206272	Wireless Ethernet TCP/IP interface for 720i, CW-90 indicators and iQUBE ²	3 lb	Consult

Options/Accessories

Part #	Description	Price
72117	Additional operating manual	Consult
Cables		
72697	RJ-45 to RJ-45, straight, 7 ft length	Consult
78860	RJ-45 to RJ-45, cross over, 7 ft length	Consult



PN 206272



PN 206271

INDICATORS /
CONTROLLERS