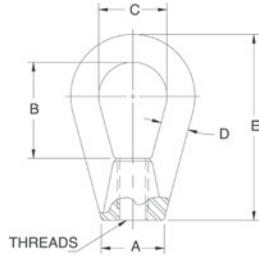


Eye Nuts



Standard Features

- Drop-forged steel, tapped NC right-hand threads

Part Number/Price

Part #	A	B	C	D	E	Thread Size	Safe Load*	Price
17772	0.50 in	1.06 in	0.75 in	0.25 in	1.68 in	1/4-20 UNC	500 lb	Consult
17773	0.75 in	1.18 in	0.87 in	0.31 in	2.25 in	3/8-16 UNC	1,800 lb	Consult
17774	1.00 in	1.56 in	1.12 in	0.43 in	3.00 in	1/2-13 UNC	3,600 lb	Consult
17775	1.25 in	1.93 in	1.37 in	0.56 in	3.75 in	5/8-11 UNC	5,800 lb	Consult

*Do not exceed the safe load

Coupling Nuts



Standard Features

- Heavy hex

Part Number/Price

Part #	Thread Size	Length	Flat	Safe Load*	Price
14638	1/4-20 UNC	1.75 in	0.44 in	500 lb	Consult
14650	3/8-16 UNC	1.75 in	0.62 in	1,500 lb	Consult
14663	1/2-13 UNC	1.75 in	0.87 in	3,000 lb	Consult
14681	5/8-11 UNC	2.12 in	1.06 in	7,500 lb	Consult
14691	3/4-10 UNC	2.25 in	1.25 in	10,000 lb	Consult

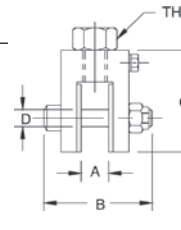
*Do not exceed the safe load

Clevis Mount Assemblies

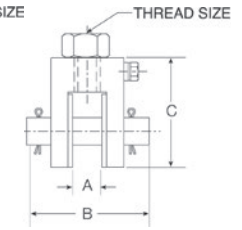


Standard Features

- Mild steel
- Assembly used in the ITCM
- Adapts rod to rod-end ball joint
- Provides electrical isolation for load cell protection
- Elimination of unwanted side loads
- Optional stainless steel provides enhanced corrosion resistance



Clevis Mount with bolt



Clevis Mount with pin

Part Number/Price

Part #	A	B	C	D	Thread Size	Safe Load*	Price
Mild Steel with Bolt							
17792	0.52 in	2.38 in	1.94 in	0.38 in	3/8-16 UNC	300 lb	Consult
17793	0.52 in	2.38 in	1.94 in	0.38 in	1/2-13 UNC	300 lb	Consult
17783	0.39 in	1.81 in	1.69 in	0.25 in	1/2-13 UNC	500 lb	Consult
17784	0.65 in	2.68 in	2.31 in	0.50 in	3/4-10 UNC	4,000 lb	Consult
17785	0.78 in	3.37 in	3.00 in	0.62 in	1-8 UNC	10,000 lb	Consult
17786	0.39 in	1.81 in	1.69 in	0.25 in	3/8-16 UNC	500 lb	Consult
17787	0.65 in	2.68 in	2.31 in	0.50 in	1/2-13 UNC	2,000 lb	Consult
17788	0.65 in	2.68 in	2.31 in	0.50 in	5/8-11 UNC	2,500 lb	Consult
17789	0.78 in	3.37 in	3.00 in	0.62 in	3/4-10 UNC	5,000 lb	Consult
Mild Steel with Pin							
17790	1.39 in	4.12 in	4.50 in	1.00 in	1 1/4-7 UNC	15,000 lb	Consult
17791	1.22 in	4.12 in	5.00 in	1.25 in	1 1/2-6 UNC	20,000 lb	Consult
Stainless Steel with Pin							
33644	0.52 in	2.38 in	1.94 in	0.38 in	1/2-13 UNC	300 lb	Consult
33643	0.39 in	1.81 in	1.69 in	0.25 in	1/2-13 UNC	500 lb	Consult
33641	0.39 in	1.81 in	1.69 in	0.25 in	3/8-16 UNC	500 lb	Consult
33658	0.52 in	2.38 in	1.94 in	0.38 in	3/8-16 UNC	500 lb	Consult
33642	0.65 in	2.68 in	2.31 in	0.50 in	3/4-10 UNC	4,000 lb	Consult
33640	0.65 in	2.68 in	2.31 in	0.50 in	1/2-13 UNC	2,000 lb	Consult
33639	0.65 in	2.68 in	2.31 in	0.50 in	5/8-11 UNC	2,500 lb	Consult
33638	0.78 in	3.37 in	3.00 in	0.62 in	3/4-10 UNC	5,000 lb	Consult

*Do not exceed the safe load