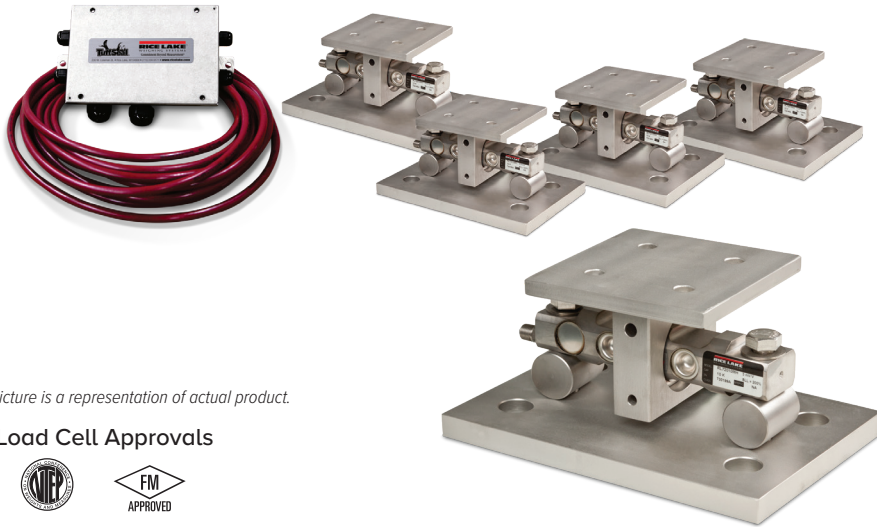


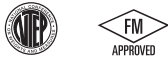
EZ Mount 1 HE

Stainless Steel, Weigh Modules



Picture is a representation of actual product.

Load Cell Approvals



Order Information

| Load Rating (Per Module) | Part # | Price |
|--------------------------------------|---------------|---------|
| 3-Module Kit | | |
| 5,000 lb* | 46695 | Consult |
| 10,000 lb | 46696 | Consult |
| 20,000 lb | 46697 | Consult |
| 30,000 lb | 46698 | Consult |
| 40,000 lb | 46699 | Consult |
| 50,000 lb | 46700 | Consult |
| 60,000 lb | 46701 | Consult |
| 4-Module Kit | | |
| 5,000 lb* | 46702 | Consult |
| 10,000 lb | 46703 | Consult |
| 20,000 lb | 46704 | Consult |
| 30,000 lb | 46705 | Consult |
| 40,000 lb | 46706 | Consult |
| 50,000 lb | 46707 | Consult |
| 60,000 lb | 46708 | Consult |
| Dummy Load Cells (Mild Steel) | | |
| 5,000 to 20,000 lb | 33749 | Consult |
| 30,000 to 60,000 lb | 74016 | Consult |
| Grounding Kit | | |
| 5,000 to 60,000 lb | 126419 | Consult |

Includes ground strap and mounting hardware
*Non-NTEP

Dimensions

| Rated Capacity | C | C1 | H | H1 | H2 | L | L1 | L2 | L3 | L4 | T | W | W1 | W2 | W3 |
|------------------|------|------|------|------|------|-------|-------|------|------|------|------------|-------|------|------|------|
| lb/in | | | | | | | | | | | | | | | |
| 5,000 to 20,000 | 0.56 | 1.06 | 5.31 | 0.75 | 0.50 | 11.00 | 8.00 | 3.00 | 6.00 | 6.87 | 5/8-18 UNF | 7.50 | 4.00 | 3.00 | 6.00 |
| 30,000 to 60,000 | 0.68 | 1.19 | 8.43 | 1.00 | 0.75 | 15.00 | 11.50 | 5.12 | 8.00 | 8.50 | 1-14 UNS | 10.00 | 6.00 | 5.12 | 8.00 |

NOTES: Mounting bolts (T) may project on lower side of base plate. Foundation plate not included

Shims

| | Part # | Price |
|---|---------------|---------|
| 5,000 to 20,000 lb, Stainless Steel | | |
| 0.0625 in | 150886 | Consult |
| 0.125 in | 150888 | Consult |
| 0.250 in | 150889 | Consult |
| 30,000 to 60,000 lb, Stainless Steel | | |
| 0.0625 in | 150890 | Consult |
| 0.125 in | 150891 | Consult |
| 0.250 in | 150892 | Consult |
| 5,000 to 20,000 lb, Mild Steel | | |
| 0.0625 in | 150874 | Consult |
| 0.125 in | 150876 | Consult |
| 0.250 in | 150877 | Consult |
| 30,000 to 60,000 lb, Mild Steel | | |
| 0.0625 in | 150878 | Consult |
| 0.125 in | 150880 | Consult |
| 0.250 in | 150881 | Consult |

Complete Kit Includes

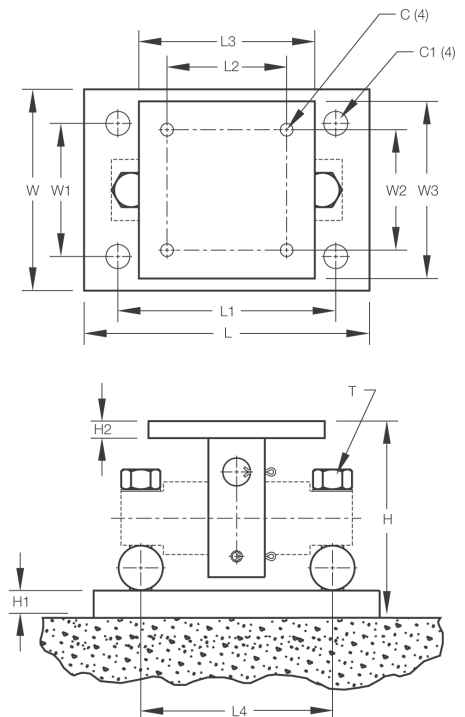
- Three or four EZ Mount 1 stainless steel compression mounts with RL72019SS welded-seal stainless steel double-ended shear beam load cells
- One JB4SS NEMA Type 4X stainless steel signal trim junction box
- 25 ft of our hostile environment EL147HE SURVIVOR® load cell cable

Standard Features

- Capacities (per module): 5,000 to 60,000 lb
- NTEP Certified (except 5,000 lb)
- Stainless steel construction
- Unique sliding pin design compensates for thermal expansion/contraction
- Self-checking
- Easy load cell replacement
- Simplified design allows bolting directly to tank and floor
- Center-loaded, double-ended shear beam design
- Low-profile design

Applications

- Medium- to heavy-capacity tank and hopper weighing applications



WEIGH MODULES