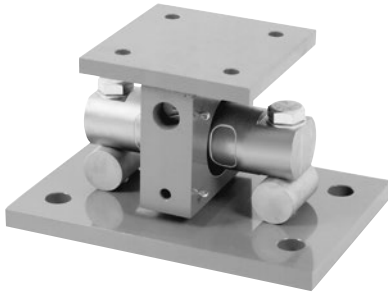


# EZ Mount 1 Tank-mounting Assembly

Mild Steel



## Part Number/Price

Ref#	Part#	Description	Price
	<b>25710</b>	Installation manual	Consult
<b>Rated Capacity: 5,000 lb - 20,000 lb</b>			
1	<b>18273</b>	Top-plate loading bracket	Consult
2	<b>14773</b>	Load cell bolt	Consult
3	<b>15177</b>	Washer	Consult
4	<b>36263</b>	Load cell, RL70000 - 5,000 lb	Consult
	<b>36264</b>	Load cell, RL70000 - 10,000 lb	Consult
	<b>36265</b>	Load cell, RL70000 - 20,000 lb	Consult
	<b>34494</b>	Load cell, RTI 5103 - 5,000 lb	Consult
	<b>34495</b>	Load cell, RTI 5103 - 10,000 lb	Consult
	<b>34496</b>	Load cell, RTI 5103 - 20,000 lb	Consult
5	<b>18267</b>	Load bearing pin	Consult
6	<b>18264</b>	Base plate	Consult
7	<b>18270</b>	Load pin	Consult
8	<b>18261</b>	Locating pin RTI	Consult
9	<b>15229</b>	Cotter pin	Consult
<b>Rated Capacity: 30,000 lb - 60,000 lb</b>			
1	<b>18274</b>	Top-plate loading bracket	Consult
2	<b>14795</b>	Load cell bolt	Consult
3	<b>15184</b>	Washer	Consult
4	<b>36266</b>	Load cell, RL70000 - 30,000 lb	Consult
	<b>36267</b>	Load cell, RL70000 - 40,000 lb	Consult
	<b>36268</b>	Load cell, RL70000 - 50,000 lb	Consult
	<b>36269</b>	Load cell, RL70000 - 60,000 lb	Consult
	<b>34497</b>	Load cell, RTI 5103 - 30,000 lb	Consult
	<b>34498</b>	Load cell, RTI 5103 - 40,000 lb	Consult
	<b>34499</b>	Load cell, RTI 5103 - 50,000 lb	Consult
	<b>34500</b>	Load cell, RTI 5103 - 60,000 lb	Consult
5	<b>18268</b>	Load bearing pin	Consult
6	<b>18265</b>	Base plate	Consult
7	<b>18271</b>	Load pin	Consult
8	<b>18262</b>	Locating pin	Consult
9	<b>15251</b>	Cotter pin	Consult
<b>Rated Capacity: 100,000 lb and 150,000 lb</b>			
1	<b>18275</b>	Top-plate loading bracket, 100,000 lb	Consult
1	<b>29014</b>	Top-plate loading bracket, 150,000 lb	Consult
2	<b>14797</b>	Load cell bolt	Consult
3	<b>15184</b>	Washer	Consult
4	<b>36270</b>	Load cell, RL70000 - 100,000 lb	Consult
	<b>36976</b>	Load cell, RL70000 - 150,000 lb	Consult
	<b>34501</b>	Load cell, RTI 5103 - 100,000 lb	Consult
	<b>17292</b>	Load cell, RTI 5103 - 150,000 lb	Consult
5	<b>18269</b>	Load bearing pin	Consult
6	<b>18266</b>	Base plate	Consult
7	<b>18272</b>	Load pin	Consult
8	<b>18263</b>	Locating pin	Consult
9	<b>15257</b>	Cotter pin	Consult
<b>Rated Capacity: 200,000 lb and 250,000 lb</b>			
1	<b>26061</b>	Top-plate loading bracket	Consult
2	<b>26071</b>	Load cell bolt	Consult
3	<b>26070</b>	Washer	Consult
4	<b>17293</b>	Load cell, RTI 5103 - 200,000 lb	Consult
	<b>17294</b>	Load cell, RTI 5103 - 250,000 lb	Consult
5	<b>26073</b>	Load bearing pin	Consult
6	<b>26074</b>	Base plate	Consult
7	<b>26067</b>	Load pin	Consult
8	<b>26076</b>	Locating pin	Consult
9	<b>26069</b>	Cotter pin	Consult

(See Diagram EZ Mount 1-A)