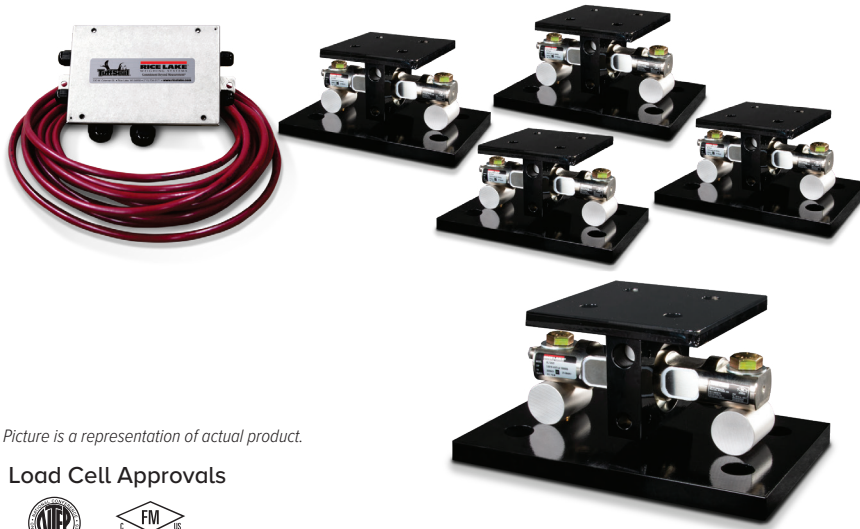


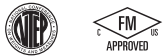
EZ Mount 1 with RL72020

Mild Steel, Weigh Modules



Picture is a representation of actual product.

Load Cell Approvals



Order Information

Load Rating (Per Module)	Part #	Price
Single Module (Does NOT Include Load Cell)		
5,000 to 20,000 lb	17823	Consult
30,000 to 60,000 lb	17824	Consult
100,000 lb	17850	Consult
150,000 lb	29012	Consult
200,000 to 250,000 lb	26068	Consult
3-Module Kit		
5,000 lb	208881	Consult
10,000 lb	208882	Consult
20,000 lb	208883	Consult
30,000 lb	208884	Consult
40,000 lb	208885	Consult
50,000 lb	208886	Consult
60,000 lb	208887	Consult
100,000 lb	208888	Consult
150,000 lb	208889	Consult
4-Module Kit		
5,000 lb	208892	Consult
10,000 lb	208893	Consult
20,000 lb	208894	Consult
30,000 lb	208895	Consult
40,000 lb	208896	Consult
50,000 lb	208897	Consult
60,000 lb	208898	Consult
100,000 lb	208899	Consult
150,000 lb	208900	Consult

VPG Revere 5103 Order Information

Load Rating (Per Module)	Part #	Price
3-Module Kit		
5,000 lb	18175	Consult
10,000 lb	18176	Consult
20,000 lb	18177	Consult
30,000 lb	32169	Consult
40,000 lb	32171	Consult
50,000 lb	18178	Consult
60,000 lb	18179	Consult
100,000 lb	18180	Consult
150,000 lb	18181	Consult
4-Module Kit		
5,000 lb	18182	Consult
10,000 lb	18183	Consult
20,000 lb	18184	Consult
30,000 lb	32170	Consult
40,000 lb	32172	Consult
50,000 lb	18185	Consult
60,000 lb	18186	Consult
100,000 lb	18187	Consult
150,000 lb	18188	Consult
Dummy Load Cells		
5,000 to 20,000 lb	33749	Consult
30,000 to 60,000 lb	74016	Consult
100,000 lb	94175	Consult
150,000 lb	158715	Consult
Grounding Kit		
5,000 to 60,000 lb	126419	Consult

Complete Kit Includes

- Three or four EZ Mount 1 mild steel compression mounts with RL72020 NTEP Certified double-ended shear beam load cells
- One JB4SS NEMA Type 4X stainless steel signal trim junction box
- 25 ft of hostile environment EL147HE SURVIVOR® load cell cable

Standard Features

- Capacities (per module): 5,000 to 250,000 lb
- Unique sliding pin design compensates for thermal expansion/contraction
- Coated mild steel construction
- Self-checking
- Easy load cell replacement
- Simplified design allows bolting directly to tank and floor
- Center-loaded double-ended shear beam design
- Low-profile design
- Compatible with VPG® Revere 5103 load cell

Applications

- Medium-to-heavy-capacity tank and hopper weighing applications

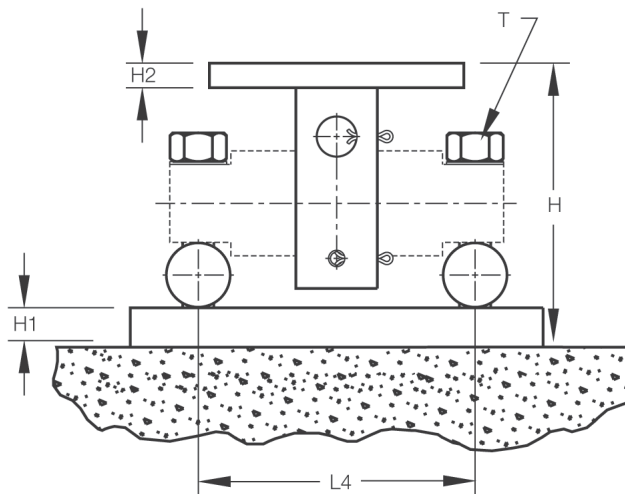
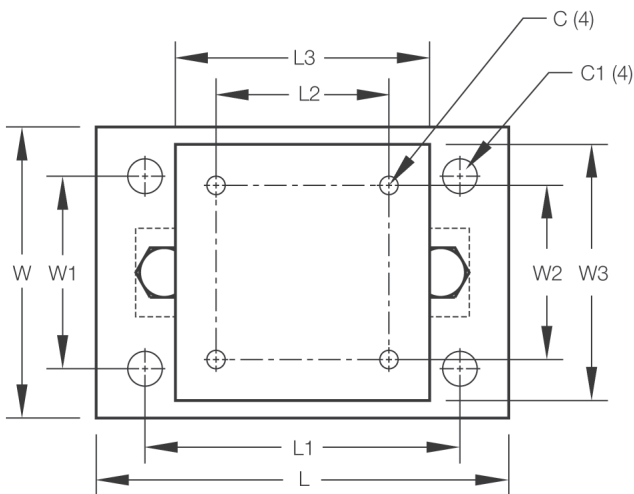
WEIGH MODULES

EZ Mount 1 with RL72020

Mild Steel, Weigh Modules

Dimensions

Rated Capacity	C	C1	H	H1	H2	L	L1	L2	L3	L4	T	W	W1	W2	W3
5,000 to 20,000	0.56	1.06	5.31	0.75	0.50	11.00	8.00	3.00	6.00	6.87	5/8-18 UNF	7.50	4.00	3.00	6.00
30,000 to 60,000	0.68	1.19	8.43	1.00	0.75	15.00	11.50	5.12	8.00	8.50	1-14 UNS	10.00	6.00	5.12	8.00
100,000 to 150,000	0.81	1.38	10.37	1.25	1.25	18.00	14.00	7.50	10.00	9.50	1-14 UNS	12.00	9.00	7.50	10.00
200,000 to 250,000	1.06	1.88	16.75	2.00	2.00	26.00	20.00	9.00	12.00	13.00	1 1/2-12 UNS	12.00	6.00	9.00	12.00



WEIGH MODULES