



Picture is a representation of actual product.

### Approvals

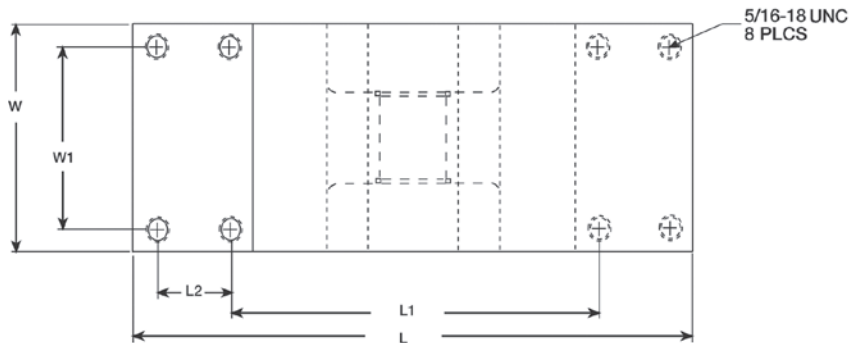
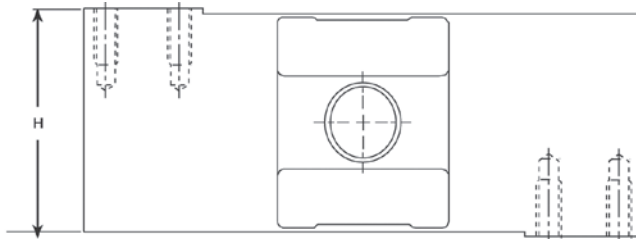


### Order Information

Load Rating	Part #	Est. Weight	Price
50 kg	45274	15 lb	Consult
100 kg	45275	15 lb	Consult
250 kg	45276	15 lb	Consult
500 kg	45277	15 lb	Consult
1,000 kg	45278	15 lb	Consult
Options			
Conduit adapter, 1/2-14 NPT	17703	1 lb	Consult

### Dimensions

Rated Capacity	L	L1	L2	W	W1	H
kg/mm						
50 to 1,000	190.5	124.8	24.9	74.9	59.9	74.9



### Interchangeable Products

RICE LAKE WEIGHING SYSTEMS  
**RLPWM12**.....page 171

RICE LAKE WEIGHING SYSTEMS  
**RL1250\***  
 VPG® TEDEA-HUNTLEIGH®  
**1250\*** .....page 337

\* Environmentally sealed

### Specifications

#### Full Scale Output:

2.0 mV/V

#### Output Resistance:

960 (± 50) ohm

#### Input Resistance:

1,100 (± 50) ohm

#### Material/Finish:

Stainless steel

#### Temperature:

Compensated range  
 14 °F to 104 °F (-10 °C to 40 °C)  
 Operating range  
 0 °F to 150 °F (-18 °C to 65 °C)

#### Seal Type:

Hermetically sealed, IP69K

#### Safe Overload:

200% full scale

#### Safe Sideload:

100% full scale

#### Rated Excitation:

5 to 10 VDC (20 V maximum)

#### Combined Error:

0.02% full scale

#### Insulation Resistance:

5,000 megohm

#### Deflection at Capacity:

0.015 in

#### Cable Length:

10 ft

#### Cable Diameter:

0.196 in  
 Polyurethane jacket

#### Cable Color Code:

Green +Excitation  
 Black -Excitation  
 White +Signal  
 Red -Signal  
 Yellow Shield

#### Max Platform Size:

39 × 39 in

#### Warranty:

One-year limited

#### Approvals:

FM  
 NTEP  
 OIML