

H35

Stainless Steel, Welded Seal, NTEP Certified 1:5,000 Class III Multiple Cell, IP67



Picture is a representation of actual product.

Approvals

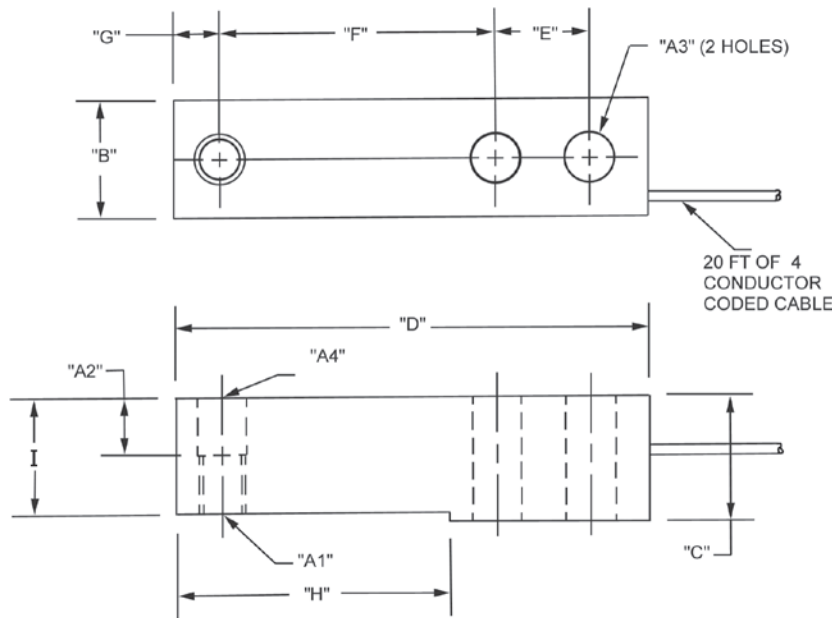


Order Information

| Load Rating | Part # | Est. Weight | Price |
|-------------|--------|-------------|---------|
| 500 lb | 84818 | 3 lb | Consult |
| 1,000 lb | 64876 | 3 lb | Consult |
| 2,500 lb | 64877 | 3 lb | Consult |
| 4,000 lb | 64878 | 3 lb | Consult |
| 5,000 lb | 64879 | 3 lb | Consult |

Dimensions

| Rated Capacity | A1 | A2 | A3 | A4 | B | C | D | E | F | G | H | I |
|----------------|---------------|------|------|------|------|------|------|------|------|------|------|------|
| 500 to 5,000 | 1/2-20 UNF-2B | 0.62 | 0.53 | 0.53 | 1.21 | 1.19 | 5.12 | 1.00 | 3.00 | 0.50 | 2.85 | 1.12 |



Interchangeable Products

RICE LAKE WEIGHING SYSTEMS

RLH35 page 124

METTLER TOLEDO®

500 lb-8 ft cable..... TB601019-008

1,000 lb-20 ft cable TB601016-020

2,500 lb-8 ft cable..... TB601016-008

4,000 lb-20 ft cable.....TB601017-020

5,000 lb-8 ft cable TB601018-008

METTLER TOLEDO

500 lb.....TB600830-020

METTLER TOLEDO

1,000 lb.....TB600831-020

METTLER TOLEDO

2,000 lb TB600832-020

METTLER TOLEDO

2,500 lb.....TB600833-020

Specifications

Full Scale Output:

3.0 mV/V

Output Resistance:

350 (± 3) ohm

Input Resistance:

385 ohm nominal

Material/Finish:

Stainless steel

Temperature:

Compensated range

14 °F to 104 °F (-10 °C to 40 °C)

Operating range

0 °F to 150 °F (-18 °C to 65 °C)

Seal Type:

Welded-seal, IP67

Safe Overload:

150% full scale

Safe Sideload:

100% full scale

Rated Excitation:

5 to 10 VDC (15 V maximum)

Combined Error:

0.02% full scale

Insulation Resistance:

5,000 megohm

Cable Length:

20 ft

Cable Diameter:

0.190 in

Polyurethane jacket

Cable Color Code:

Green +Excitation

Black -Excitation

White +Signal

Red -Signal

Yellow Shield

Warranty:

One-year limited

Approvals:

FM

NTEP