



Picture is a representation of actual product.

Approvals

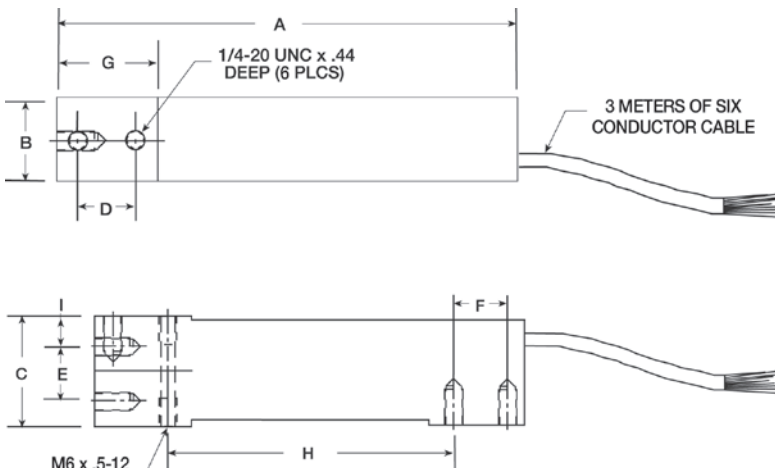


Order Information

Load Rating	Part #	Est. Weight	Price
NTEP Certified			
7 kg	72764	2 lb	Consult
15 kg	72767	2 lb	Consult
20 kg	72769	2 lb	Consult
30 kg	72771	2 lb	Consult
50 kg	72776	2 lb	Consult
75 kg	72777	2 lb	Consult
100 kg	72778	2 lb	Consult
OIML with Metric Threads			
3 kg	121396	2 lb	Consult
5 kg	121397	2 lb	Consult
7 kg	121398	2 lb	Consult
10 kg	121399	2 lb	Consult
15 kg	121400	2 lb	Consult
20 kg	121401	2 lb	Consult
30 kg	121402	2 lb	Consult
50 kg	121403	2 lb	Consult
75 kg	124835	2 lb	Consult
100 kg	121404	2 lb	Consult

Dimensions

Rated Capacity	A	B	C	D	E	F	G	H	I
kg/mm									
3 to 100	150.3	25.4	39.9	19.1	19.1	19.1	33.8	99.6	11.4



Interchangeable Products

- RICE LAKE WEIGHING SYSTEMS
RLSP4*..... page 170
- RICE LAKE WEIGHING SYSTEMS
RL1042..... page 173
- VPG® TEDEA-HUNTLEIGH®
1042..... page 328

*Color code is different

Specifications

- Full Scale Output:**
2.0 mV/V
- Output Resistance:**
350 (± 3) ohm
- Input Resistance:**
350 ohm
- Material/Finish:**
Anodized Aluminum
- Temperature:**
Compensated range
14 °F to 104 °F (-10 °C to 40 °C)
Operating range
0 °F to 150 °F (-18 °C to 65 °C)
- Seal Type:**
Environmentally sealed, IP67
- Safe Overload:**
150% full scale
- Rated Excitation:**
5 to 10 VDC (15 V maximum)
- Combined Error:**
0.02% full scale
- Insulation Resistance:**
5,000 megohm
- Deflection at Capacity:**
0.015 in
- Cable Length:**
10 ft
- Cable Diameter:**
0.190 in
PVC jacket
- Cable Color Code:**
Blue +Excitation
Black -Excitation
White +Signal
Red -Signal
Green +Sense
Grey -Sense
- Warranty:**
One-year limited
- Approvals:**
FM
NTEP
OIML