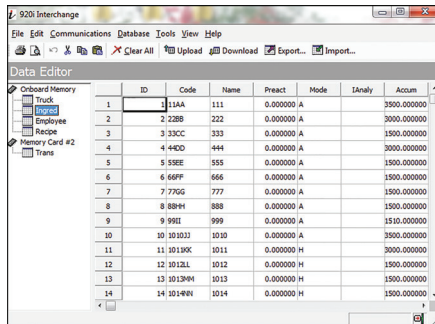
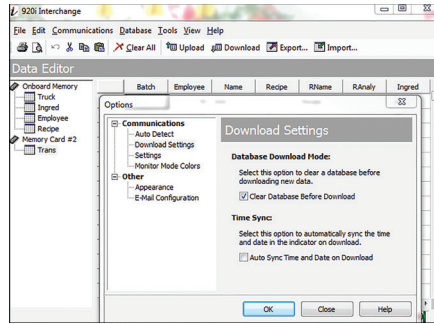


Interchange

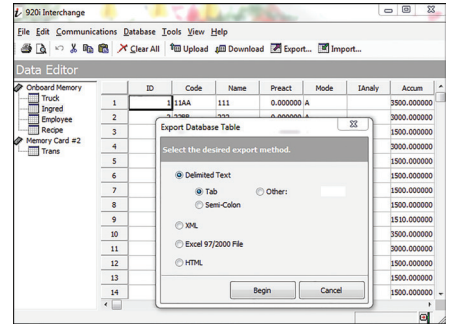
920i®/1280 Database Management Software



Database Editor



Communication Settings for Download



Export or Import Data

Interchange database management software is used to set up a custom job file for each database you need to export. Manually or automatically run the job file by setting a predetermined time using Windows® Task Scheduler.

Part Number/Price

Part #	Description	Price
72809	Interchange database software	Consult

Standard Features

- Edit and manage databases
- Set up using an export job wizard
- Connect using RS-232, RS-485 or Ethernet TCP/IP
- Program will connect to the indicator and upload current database structure
- Select the desired database
- Export database table file types: delimited text, XML, XLS, HTML
- Compatible with 920i® and 1280 indicators

Specifications

Minimum System Requirements:
Windows® 7 or newer

SOFTWARE SYSTEMS