



Picture is a representation of actual product.



Module with RL20000ST S-beam load cell

### Complete Kit Includes

- Three or four ITCM assemblies with RL20000ST NTEP Certified S-beam load cells
- One JB4SS NEMA Type 4X stainless steel signal trim junction box
- 25 ft of hostile environment EL147HE SURVIVOR® load cell cable

### Standard Features

- Capacities (per module): 100 to 5,000 lb
- Clevis mounts with nylon insulating washers
- PTFE lined rod-end ball joints
- Load cell is completely isolated from stray currents
- Grounding strap provides alternative path to ground
- Complete package for ease of installation
- Provides correct loading even in difficult installations
- Lower overall height compared to other isolated tension assemblies

### Applications

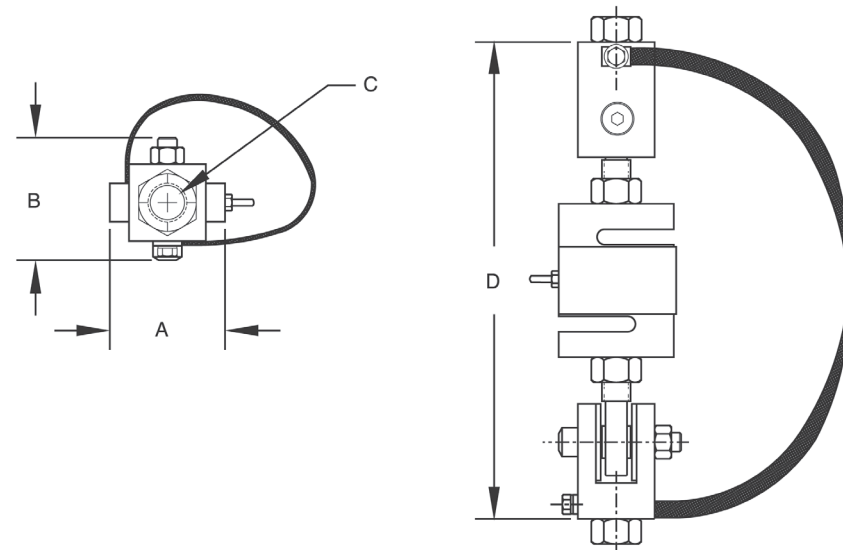
- Suspended hoppers and tanks
- Mechanical scale conversions
- Use as a single module or in multiples

### Load Cell Approvals



### Load Rating Dimensions Per Module

Load Cell Capacity lb/in	A	B	C	D	Single Module		3-Module Kit		4-Module Kit	
						Price		Price		Price
100	2.00	1.81	3/8-16 UNC 1/2-13 UNC	7.00 (ref)	46765 46766	Consult Consult	46735 46736	Consult Consult	46751 46752	Consult Consult
250	2.00	1.81	3/8-16 UNC 1/2-13 UNC	7.00 (ref)	46767 46768	Consult Consult	46737 46738	Consult Consult	46753 46754	Consult Consult
500	2.68	2.68	1/2-13 UNC 5/8-11 UNC	9.50 (ref)	46769 46770	Consult Consult	46739 46740	Consult Consult	46755 46756	Consult Consult
750	2.68	2.68	1/2-13 UNC 5/8-11 UNC	9.50 (ref)	46771 46772	Consult Consult	46741 46742	Consult Consult	46757 46758	Consult Consult
1,000	2.68	2.68	1/2-13 UNC 5/8-11 UNC	9.50 (ref)	46773 46774	Consult Consult	46743 46744	Consult Consult	46759 46760	Consult Consult
2,500	2.68	2.68	5/8-11 UNC 3/4-10 UNC	9.50 (ref)	46775 46776	Consult Consult	46745 46746	Consult Consult	46761 46762	Consult Consult
3,000	3.37	3.37	3/4-10 UNC	10.75 (ref)	46777	Consult	46747	Consult	46763	Consult
5,000	3.37	3.37	3/4-10 UNC	12.00 (ref)	46778	Consult	46748	Consult	46764	Consult



WEIGH MODULES