

REMOTE DISPLAYS

# LaserLight®

4 Inch, 6 Inch & 4 Inch Stop & Go



## Part Number/Price

Ref#	Part#	Description	Price
1	16861	Warning high label	Consult
2	76254	10 in ground wire assembly	Consult
3	75857	AC power cord assembly	Consult
4	40672	Ground wire, 9 in	Consult
4	15602	Ground wire, 12 in	Consult
5	Consult	Steel enclosure	Consult
6	76408	AC cable assembly	Consult
7	16892	Ground/earth label	Consult
8	15628	1/2 NPT black cord grip	Consult
9	15630	1/2 NPT black locknut	Consult
11	15650	Cable tie 3/4 in mount	Consult
12	75569	Inside terminal bracket	Consult
13	45302	FEM-FEM 8-32 NC standoff	Consult
14	44744	3 position terminal block	Consult
15	14833	4-40 NC x 1/2 MACH screw	Consult
16	14626	8-32 NC kep nut	Consult
17	15134	Lock no. 8 type A washer	Consult
18	72998	Time-set covering label	Consult
19	58983	SL-7 with nut cord grip	Consult
20	41255	1/2 nylon flat washer	Consult
21	76176	Clear extruded rod	Consult
22	15895	Switch cover	Consult
23	75861	Push button switch assembly	Consult
24	22262	Liquid tight 1/2 NPT seal	Consult
25	71349	Breathing .25 diameter filter	Consult
26	Consult	Gusset bottom plate	Consult
27	76158	Retaining no. 8 ring	Consult
28	30625	Plain no. 8 nylon washer	Consult
29	76157	8-32 NC x .375 screw	Consult
30	Consult	Vertical component plate	Consult
31	74880	4 in primary display board	Consult
31	74882	6 in primary display board	Consult
32	74881	4 in secondary display board	Consult
32	74883	6 in secondary display board	Consult
33	76156	PCB support mini post	Consult
34	76246	Cable assy, 21 in	Consult
34	76247	Cable assy, 30 in	Consult
35	104283	23 in long ribbon cable	Consult
36	76653	Serial comm pin out label	Consult
37	76225	14 in long ribbon cable	Consult
38	72996	12V board power supply	Consult
38	175563	12V power supply UL marked	Consult
39	45043	4 in with no. 8 ground wire	Consult
40	75860	Power supply cable assembly	Consult
41	19538	Slotted black post only	Consult
42	104284	CPU to traffic light cable	Consult
44	119735	CPU Laserlight board	Consult
45	76226	4 in long ribbon cable	Consult
46	77136	Printed circuit support	Consult
47	110520	LaserLight-Stop/Go gray lens	Consult
47	107025	LaserLight-4 gray lens	Consult
47	110517	LaserLight-6 gray lens	Consult
49	74870	Mounting gasket plate	Consult
50	15665	1/2 NPT reducing gland	Consult
50	14839	6-32 NC x 1/4 MACH screw	Consult
51	80589	Cable tie push-in mount	Consult
52	103651	LED traffic board assembly	Consult
54	104301	3M VHB 5952 black tape	Consult/in
<b>Components of Part #92056</b>			<b>Consult</b>
	66730	Cylindrical EMI filter (1)	Consult
	76513	4 POS screw terminal connector (2)	Consult
	76514	6 POS screw terminal connector (1)	Consult

(See Diagrams Laserlight-C-D-E)

Remote Displays



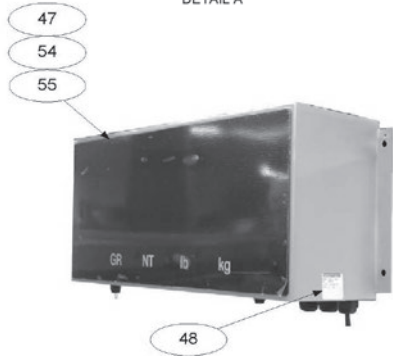
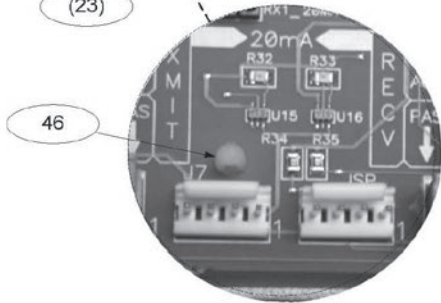
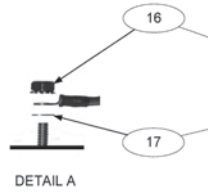
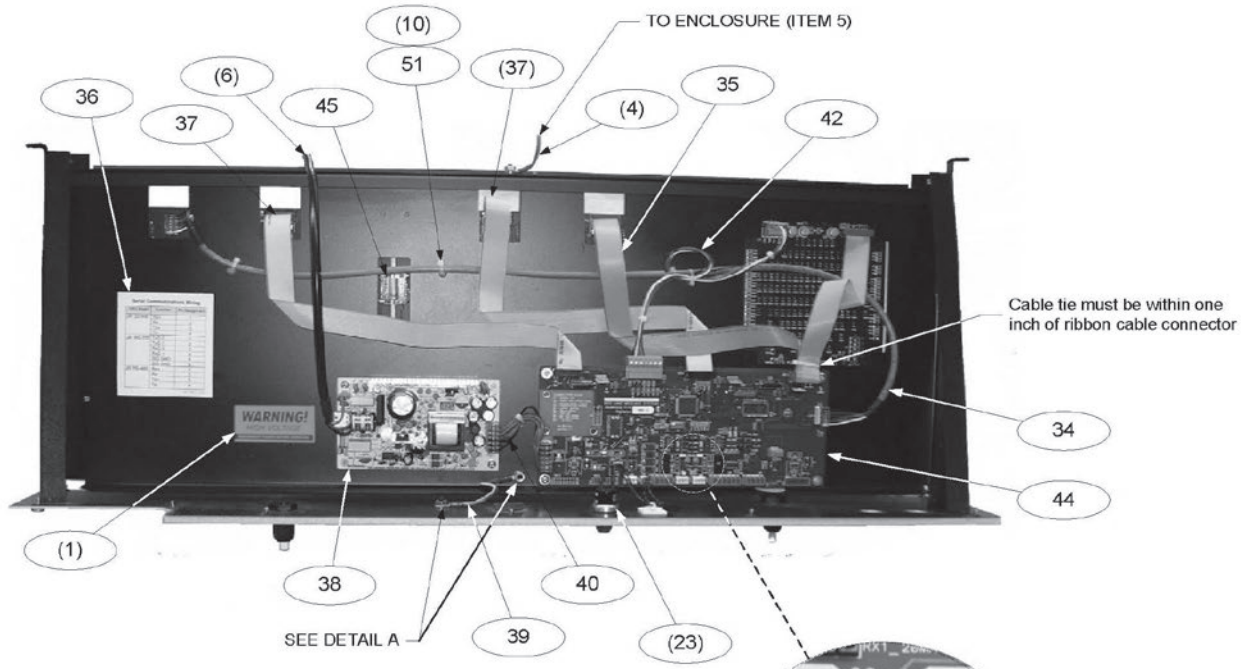
4 inch



6 inch shown with visor

REMOTE DISPLAYS  
**LaserLight®**  
 4 Inch, 6 Inch & 4 Inch Stop & Go

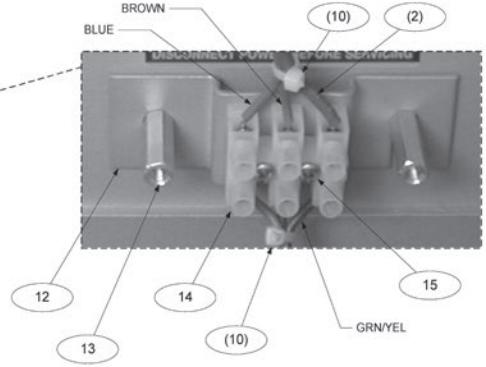
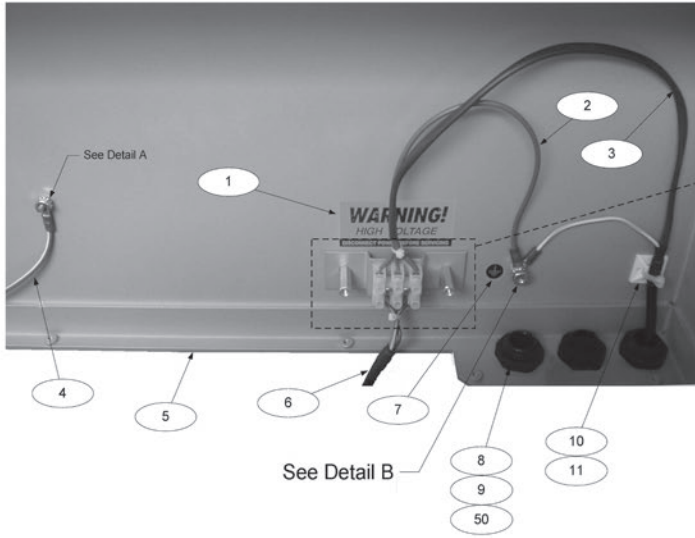
Remote Displays



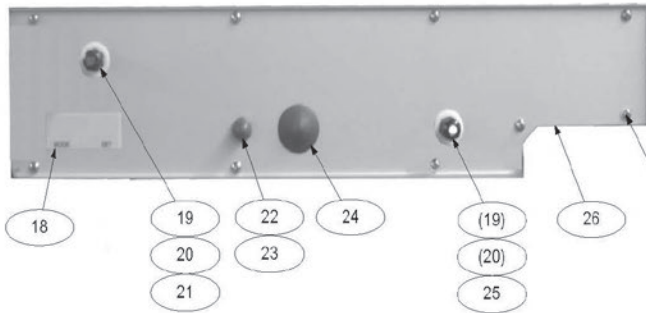
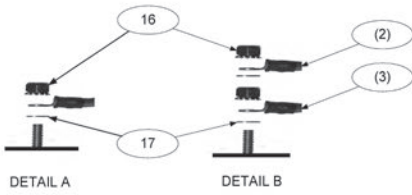
*LaserLight-C*  
 4 in Stop/Go LaserLight

REMOTE DISPLAYS  
**LaserLight®**  
 4 Inch Stop & Go

Remote Displays



LaserLight-D



SEE DETAIL C

