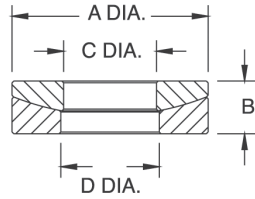
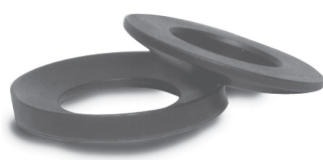


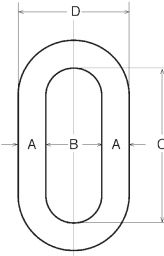
# Spherical Washer Sets



## Part Number/Price

Part #	Bolt Size	A	B	C	D	Price
<b>Mild Steel</b>						
15196	0.25 in	0.62 in	0.20 in	0.28 in	0.31 in	Consult
15197	0.38 in	0.88 in	0.25 in	0.41 in	0.44 in	Consult
15198	0.50 in	1.12 in	0.31 in	0.53 in	0.56 in	Consult
15199	0.62 in	1.38 in	0.31 in	0.66 in	0.69 in	Consult
15200	0.75 in	1.62 in	0.38 in	0.78 in	0.81 in	Consult
15201	1.00 in	2.00 in	0.50 in	1.06 in	1.12 in	Consult
15202	1.25 in	2.62 in	0.50 in	1.31 in	1.38 in	Consult
15203	1.50 in	2.88 in	0.53 in	1.56 in	1.62 in	Consult
15205	2.00 in	3.88 in	0.81 in	2.06 in	2.12 in	Consult
<b>Stainless Steel</b>						
33218	0.50 in	1.12 in	0.31 in	0.53 in	0.56 in	Consult
33220	0.75 in	1.62 in	0.38 in	0.78 in	0.81 in	Consult

# Weldless End Links



## Standard Features

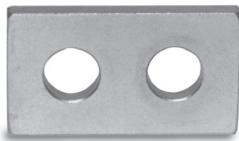
- Self-colored or hot-dip galvanized
- Forged carbon steel quenched and tempered

## Part Number/Price

Part #	A	B	C	D	Safe Load*	Price
F312L	0.625 in	1.00 in	3.25 in	2.32 in	9,300 lb	Consult
17810	0.875 in	2.00 in	5.13 in	3.75 in	12,000 lb	Consult
21911	1.00 in	2.25 in	5.75 in	4.25 in	15,200 lb	Consult
65430	1.25 in	2.50 in	7.00 in	5.00 in	26,400 lb	Consult
21912	1.375 in	2.75 in	7.75 in	5.50 in	30,000 lb	Consult

\*Do not exceed the safe load

# Load Cell Spacers

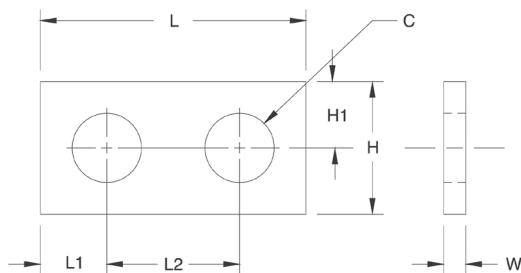


## Standard Features

- Use with most popular single-ended beams
- Provides flat mounting surface required for optimal load cell performance
- Zinc-plated mild steel or stainless steel

## Part Number/Price

Part #	C	H	H1	L	L1	L2	W	Price
<b>Mild Steel</b>								
17754	0.53 in	1.25 in	0.62 in	2.25 in	0.62 in	1.00 in	0.25 in	Consult
17755	0.78 in	1.50 in	0.75 in	3.00 in	0.75 in	1.50 in	0.25 in	Consult
17756	1.03 in	2.00 in	1.00 in	4.00 in	1.00 in	2.00 in	0.25 in	Consult
18260	0.53 in	1.25 in	0.62 in	2.25 in	0.62 in	1.00 in	0.37 in	Consult
<b>Stainless Steel</b>								
17757	0.78 in	1.50 in	0.75 in	3.00 in	0.75 in	1.50 in	0.25 in	Consult
18383	0.53 in	1.25 in	0.62 in	2.25 in	0.62 in	1.00 in	0.37 in	Consult
18411	0.53 in	1.25 in	0.62 in	2.25 in	0.62 in	1.00 in	0.25 in	Consult



# Load Button



## Standard Features

### Load Button

- Suitable for use with compression mounting assemblies, canisters, S-beams and single-ended beams
- Hardened alloy steel

## Part Number/Price

Part #	T	D	H	H1	R	W	Price
17750	3/8-24 UNF	0.75 in	0.60 in	0.30 in	2.00 in	0.63 in	Consult
17751	1/2-20 UNF	0.75 in	0.70 in	0.30 in	4.00 in	0.63 in	Consult
17752	3/4-16 UNF	1.50 in	0.90 in	0.30 in	6.00 in	1.25 in	Consult

