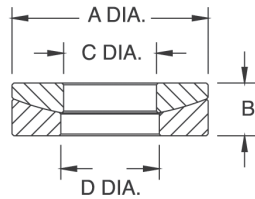
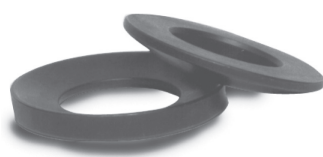


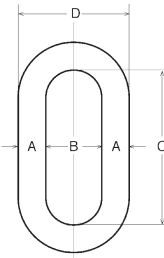
Spherical Washer Sets



Part Number/Price

| Part # | Bolt Size | A | B | C | D | Price |
|------------------------|-----------|---------|---------|---------|---------|---------|
| Mild Steel | | | | | | |
| 15196 | 0.25 in | 0.62 in | 0.20 in | 0.28 in | 0.31 in | Consult |
| 15197 | 0.38 in | 0.88 in | 0.25 in | 0.41 in | 0.44 in | Consult |
| 15198 | 0.50 in | 1.12 in | 0.31 in | 0.53 in | 0.56 in | Consult |
| 15199 | 0.62 in | 1.38 in | 0.31 in | 0.66 in | 0.69 in | Consult |
| 15200 | 0.75 in | 1.62 in | 0.38 in | 0.78 in | 0.81 in | Consult |
| 15201 | 1.00 in | 2.00 in | 0.50 in | 1.06 in | 1.12 in | Consult |
| 15202 | 1.25 in | 2.62 in | 0.50 in | 1.31 in | 1.38 in | Consult |
| 15203 | 1.50 in | 2.88 in | 0.53 in | 1.56 in | 1.62 in | Consult |
| 15205 | 2.00 in | 3.88 in | 0.81 in | 2.06 in | 2.12 in | Consult |
| Stainless Steel | | | | | | |
| 33218 | 0.50 in | 1.12 in | 0.31 in | 0.53 in | 0.56 in | Consult |
| 33220 | 0.75 in | 1.62 in | 0.38 in | 0.78 in | 0.81 in | Consult |

Weldless End Links



Standard Features

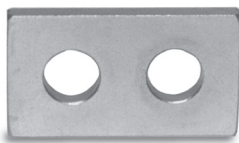
- Self-colored or hot-dip galvanized
- Forged carbon steel quenched and tempered

Part Number/Price

| Part # | A | B | C | D | Safe Load* | Price |
|--------|----------|---------|---------|---------|------------|---------|
| F312L | 0.625 in | 1.00 in | 3.25 in | 2.32 in | 9,300 lb | Consult |
| 17810 | 0.875 in | 2.00 in | 5.13 in | 3.75 in | 12,000 lb | Consult |
| 21911 | 1.00 in | 2.25 in | 5.75 in | 4.25 in | 15,200 lb | Consult |
| 65430 | 1.25 in | 2.50 in | 7.00 in | 5.00 in | 26,400 lb | Consult |
| 21912 | 1.375 in | 2.75 in | 7.75 in | 5.50 in | 30,000 lb | Consult |

*Do not exceed the safe load

Load Cell Spacers

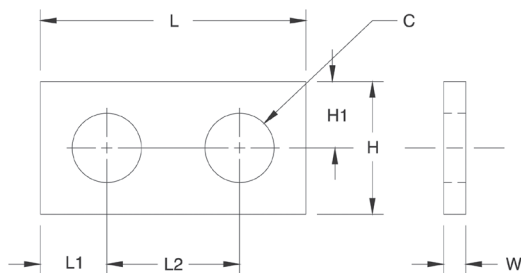


Standard Features

- Use with most popular single-ended beams
- Provides flat mounting surface required for optimal load cell performance
- Zinc-plated mild steel or stainless steel

Part Number/Price

| Part # | C | H | H1 | L | L1 | L2 | W | Price |
|------------------------|---------|---------|---------|---------|---------|---------|---------|---------|
| Mild Steel | | | | | | | | |
| 17754 | 0.53 in | 1.25 in | 0.62 in | 2.25 in | 0.62 in | 1.00 in | 0.25 in | Consult |
| 17755 | 0.78 in | 1.50 in | 0.75 in | 3.00 in | 0.75 in | 1.50 in | 0.25 in | Consult |
| 17756 | 1.03 in | 2.00 in | 1.00 in | 4.00 in | 1.00 in | 2.00 in | 0.25 in | Consult |
| 18260 | 0.53 in | 1.25 in | 0.62 in | 2.25 in | 0.62 in | 1.00 in | 0.37 in | Consult |
| Stainless Steel | | | | | | | | |
| 17757 | 0.78 in | 1.50 in | 0.75 in | 3.00 in | 0.75 in | 1.50 in | 0.25 in | Consult |
| 18383 | 0.53 in | 1.25 in | 0.62 in | 2.25 in | 0.62 in | 1.00 in | 0.37 in | Consult |
| 18411 | 0.53 in | 1.25 in | 0.62 in | 2.25 in | 0.62 in | 1.00 in | 0.25 in | Consult |



Load Button



Standard Features

Load Button

- Suitable for use with compression mounting assemblies, canisters, S-beams and single-ended beams
- Hardened alloy steel

Part Number/Price

| Part # | T | D | H | H1 | R | W | Price |
|--------|------------|---------|---------|---------|---------|---------|---------|
| 17750 | 3/8-24 UNF | 0.75 in | 0.60 in | 0.30 in | 2.00 in | 0.63 in | Consult |
| 17751 | 1/2-20 UNF | 0.75 in | 0.70 in | 0.30 in | 4.00 in | 0.63 in | Consult |
| 17752 | 3/4-16 UNF | 1.50 in | 0.90 in | 0.30 in | 6.00 in | 1.25 in | Consult |

