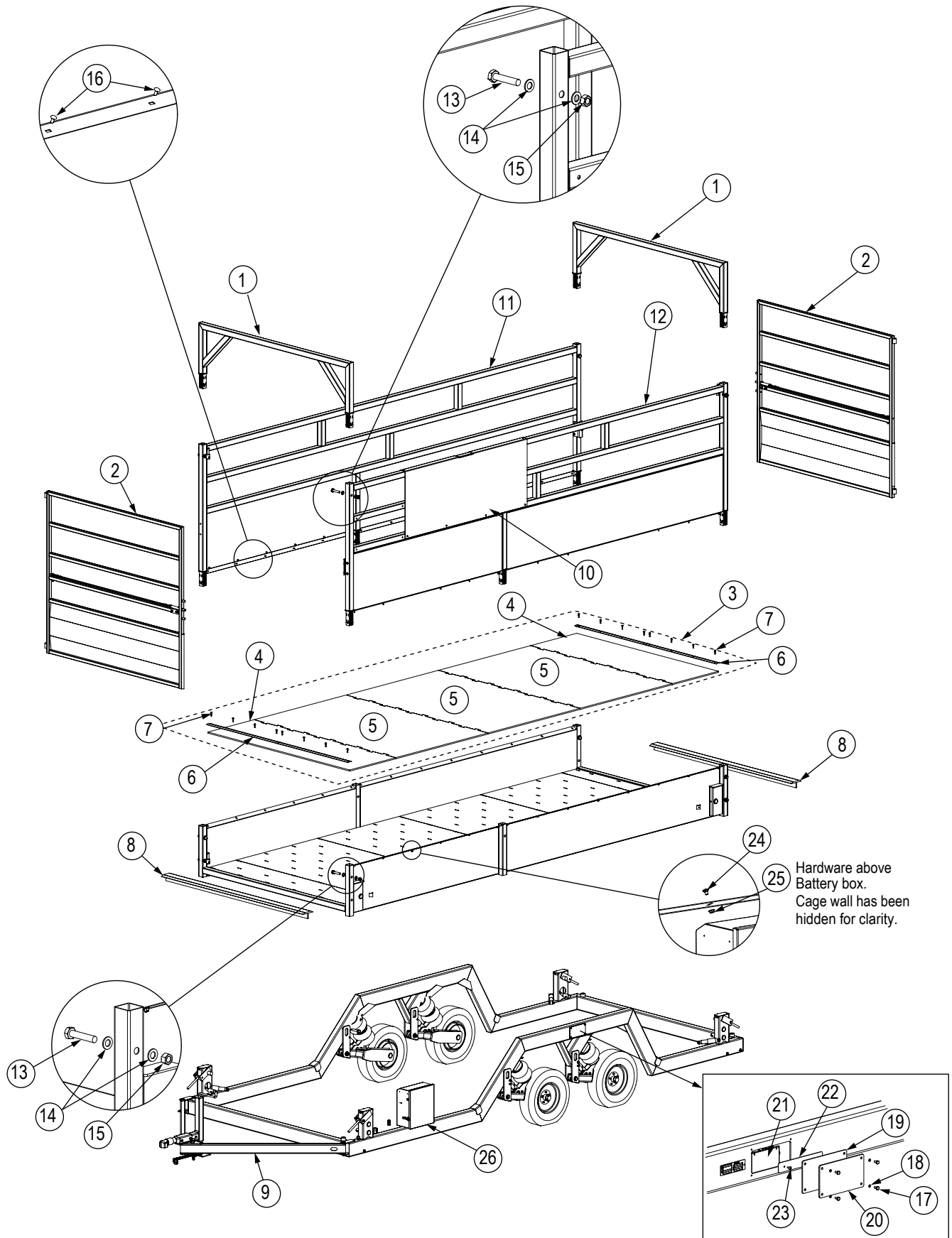


MAS-M

Mobile Animal Scale

LIVESTOCK
REPLACEMENT PARTS





Part Number/Price

Item #	Part #	Description
1	130931	Cage crossmember
2	131782	Gate, MAS — see gate component details
3	127753	Mat installation kit - 13 ft (includes sealant, adhesive and items 4-7)
	127752	Mat installation kit - 18 ft (includes sealant, adhesive and items 4-7)
	126775	Sealant, Silicone II black 13 ft (qty 2) / 18 ft (qty 3)
	128280	Adhesive, Insta-Cure + 13 ft (qty 5) / 18 ft (qty 7)
4	127234	Matting, MAS end section 13 ft (qty 2)
	127236	Matting, MAS end section 18 ft (qty 2)
5	127235	Matting, MAS center 13 ft (qty 1) / 18 ft (qty 3)
6	131855	Mounting strip (qty 4)
7	127053	Bolt, carriage 5/16-18 (qty 16)
	21939	Washer, plain 5/16 Type A (qty 16)
	35170	Nut, lock 5/16-18 NC hex (qty 16)
8	126787	Scale T-Belting (83 in width)
	127271	Hold down loops
9	—	Hitch assembly — see hitch and load cell stand component details (does not include hold down loops)
10	130022	Operator shield
11	131708	Cage wall 13 ft
	131946	Cage wall 18 ft, right
12	131708	Cage wall 13 ft
	131947	Cage wall 18 ft, left
13	15099	Cap screw, 3/4-10 NC x 3-3/4 in
	15097	Cap screw, 3/4-10 NC x 3-1/2 in (18 ft only - center bolts for walls)
14	15179	Washer, plain 3/4 Type A
15	14697	Nut, lock 3/4-10 NC hex
16	72083	Bolt carriage 5/16 x 1/2 in round head grade A zinc
	14646	Nut 5/16 flanged serrated
	21939	Washer, plain 5/16 Type A
17	127008	Screw, cap 1/4-20 x 3/4 in
18	15147	Washer, lock 1/4 regular
19	126819	Foam gasket J-box
20	127740	Cover plate scale frame/J-box
21	88956	Scale junction box 4 cell SS
22	131885	Mount plate for J-Box
23	121129	Screw 10-32 x 0.5 in
	14633	Nut, 10-32
24	126950	Nut, flange 5/16-18 case
25	158047	Bolt, carriage 5/16-8 x 1/2 in
26	127721	Battery box w/ compressor and wiring — see battery box parts
—	131374	Paint, touch up
—	88563	Primer

LIVESTOCK
REPLACEMENT PARTS