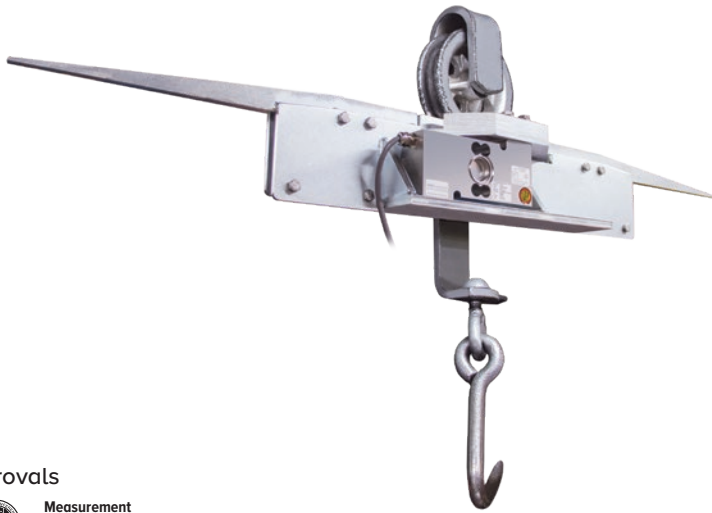


# MS200

Portable Monorail Scale

MONORAIL SCALES



## Approvals



Measurement  
Canada  
Approved

## Part Number/Price

Part #	Description	Est. Weight	Price
<b>MS200HB for 3/8-inch or 1/2-inch Rails</b>			
19743	750 x 0.5 lb, nickel-plated	38 lb	Consult
<b>MS200HB for 1/2-inch Rails</b>			
213006	1,500 x 0.5 lb, nickel-plated	40 lb	Consult
213007	1,500 x 0.5 lb, stainless steel	40 lb	Consult

## Options/Accessories

Part #	Description	Price
16984	Additional operating manual	Consult
167585	Replacement load cell for 750 lb cap monorail, model SPT 1510-500 kg, 25 ft cable	Consult
87036	Replacement load cell for 1,500 lb cap monorail, model RLPCBC-60, 1000 kg, 15 t cable	Consult
216728	Configuration and Monorail calibration	Consult

## Standard Features

- 8-in live-rail designed to weigh one trolley at a time
- 750 x .5 lb (3/8 inch rail)
- 1500 x .5 lb (1/2 inch rail)
- Available for rail sizes 3/8 x 2-1/2 in or 1/2 x 2-1/2 in
- Requires less than 41 in of straight rail to install (22 inch between tail hangers)
- Nickel-plated mild steel and stainless steel construction available
- High accuracy, stainless steel load cell
- 20 ft of cable on 750 lb capacity models
- 15 ft of cable on 1500 lb capacity models
- Slightly recessed live-rail for the trolley roller provides stable weighments

## Specifications

### Construction:

Nickel-plated mild steel or stainless steel construction, stainless steel hardware

### Load Cell Construction:

Stainless steel

### Bridge Resistance:

350 ohms nominal

### Rated Output:

2 mV/V

### Nonlinearity:

0.03% full scale

### Warranty:

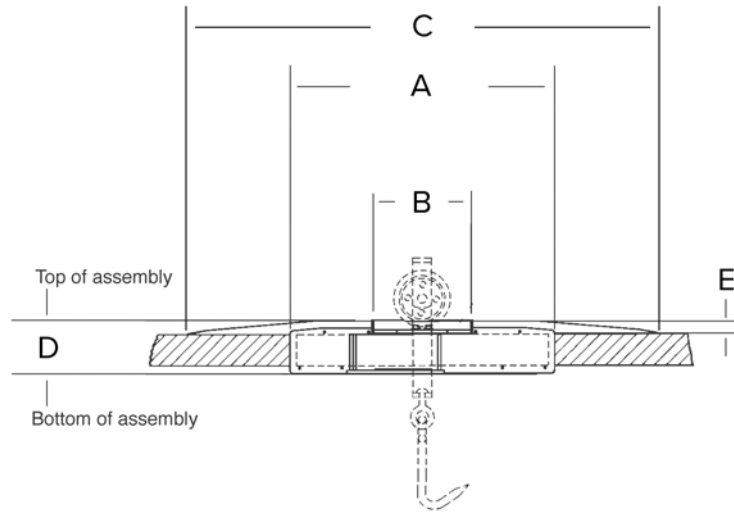
One-year limited

### Approvals:

NTEP CC 90-003 Class III, NMAX 1500

## Dimensions

MS200	
750 lb Capacity	
A	21.00 in (533 mm)
B	8.00 in live rail (203 mm)
C	40.32 in (1,024 mm)
D	4.50 in (114 mm)
E	1.13 in (29 mm)



MONORAIL SCALES

## Dimensions

MS200	
1,500 lb Capacity	
A	40.32 in (1,024 mm)
B	4.9 in (125 mm)
C	8.00 in live rail (203 mm)
D	5.19 in (132 mm)
E	3.46 in (88 mm)

