



Standard Features

- Designed and manufactured to each integrated solution. Machined from 17-4 stainless steel for safety, strength and corrosion resistance.
- (Contact MSI for application consultation)

For most overhead weighing applications, traditional scales are an ideal solution. However, applications with limited to no headroom require specialty equipment beyond even reduced-height or low-profile crane scales.

One such solution is an MSI load pin sensor. A load pin sensor is a type of load cell that directly replaces clevis, pivot, normal shaft or equalizer pins. Load pin sensors are designed to be permanently installed, so they can continuously monitor vertical or horizontal tension. An integrated load pin provides load monitoring and overload protection without impacting headroom to promote safety and to prevent costly equipment damage.

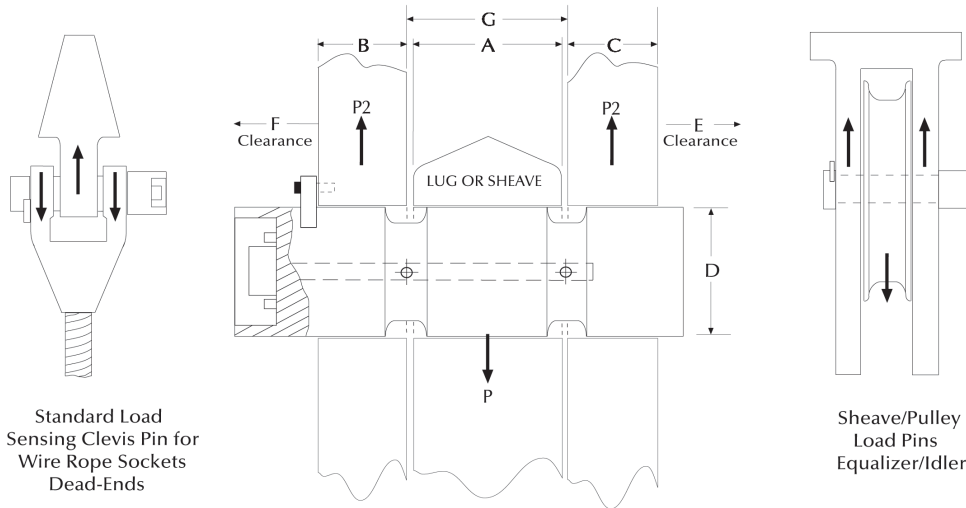
Rice Lake's industry leading engineers design and manufacture custom load pin sensors for any application. Every load pin is constructed from stainless steel for safety, strength (minimum 5:1) and corrosion resistance.

To receive a quote for a load pin sensor, complete the load pin questionnaire on page 176 or online at www.ricelake.com/questionnaires. For further assistance, contact an MSI overhead weighing specialist.

MSI Load Pin Questionnaire

Name: _____
 Company: _____
 Phone: _____

LOAD PIN CRITICAL DIMENSIONS



| A=Width | B=Width | C=Width | D=Diameter | E=Clearance | F=Clearance | G=Width |
|---------|---------|---------|------------|-------------|-------------|---------|
| inch | inch | inch | inch | inch | inch | inch |

NOTE: Minimum clearance between A and G is 0.0625 inch

LOAD PIN DATA

Lube port: Yes No _____ # of exits Accuracy requirement: _____
 Hoist capacity: _____ tons Temperature requirement: _____
 Parts of wire rope: _____ Output requirement: _____
 Sensor capacity: _____ tons Material testing requirements: _____
 Safety factor: 3:1 5:1 7:1 10:1 Load vector orientation/alignment:
 Application: _____ ← → ↑ ↓

CABLE CONNECTIONS

End-mounted cable: Sensor's cable length: _____ feet

End-mounted connector: Comments: _____
 (standard) _____

Side-mounted cable: _____

Side-mounted connector: _____

Recessed connector: _____

Form #0201 New 10/2024

RICE LAKE
LOAD CELLS