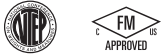


Picture is a representation of actual product

Approvals

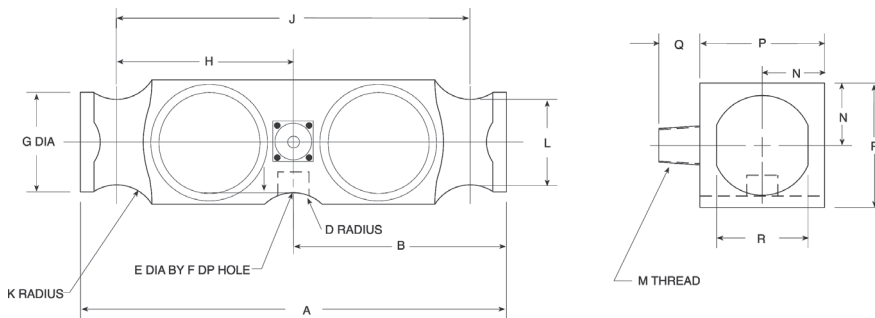


Order Information

Load Rating	Part #	Est. Weight	Price
50,000 lb	21605	22 lb	Consult
65,000 lb	21606	22 lb	Consult
100,000 lb	21607	22 lb	Consult
Overbraided Cable			
50,000 lb	101121	24 lb	Consult
65,000 lb	101122	24 lb	Consult
100,000 lb	101123	24 lb	Consult

Dimensions

Rated Capacity	A	B	D	E	F	G	H	J	K	L	M	N	P	Q	R
50,000 to 65,000	10.25	5.12	1.00	0.75	0.78	2.40	4.25	8.50	1.00	2.06	1/2-14 NPT	1.50	3.00	1.03	2.20
100,000	10.25	5.12	1.00	—	—	2.40	4.25	8.50	1.00	2.06	1/2-14 NPT	1.50	3.00	1.03	2.20



Interchangeable Products

RICE LAKE WEIGHING SYSTEMS  
**RL75223** ..... page 142  
 THURMAN®  
**TSC 800**

Weigh Module Available

RICE LAKE WEIGHING SYSTEMS  
**Translink™** .....page 78

Specifications

**Full Scale Output:**

3.0 mV/V

**Output Resistance:**

700 (± 7) ohm

**Input Resistance:**

700 (± 7) ohm

**Material/Finish:**

High-alloy steel, nickel plated

**Temperature:**

Compensated:  
 14 °F to 104 °F (-10 °C to 40 °C)

Operating:  
 0 °F to 150 °F (-18 °C to 65 °C)

**Seal Type:**

Welded-seal, IP67

**Safe Overload:**

150% full scale

**Safe Sideload:**

100% full scale

**Rated Excitation:**

5 to 10 VDC (20 V maximum)

**Combined Error:**

0.025% full scale

**Non-repeatability:**

0.01% full scale

**Insulation Resistance:**

5,000 megohm

**Deflection at Capacity:**

50,000 lb: 0.018 in

65,000 lb: 0.022 in

100,000 lb: 0.034 in

**Cable Length:**

40 ft

**Cable Diameter:**

0.295 in

Polyurethane jacket

**Cable Color Code:**

Red +Excitation

Black -Excitation

Green +Signal

White -Signal

**Warranty:**

One-year limited

**Approvals:**

cFMus

NTEP