

# 5723

Alloy Steel, Environmentally Sealed, NTEP Certified 1:5,000 Class III Multiple Cell, IP67



Picture is a representation of actual product

### Approvals

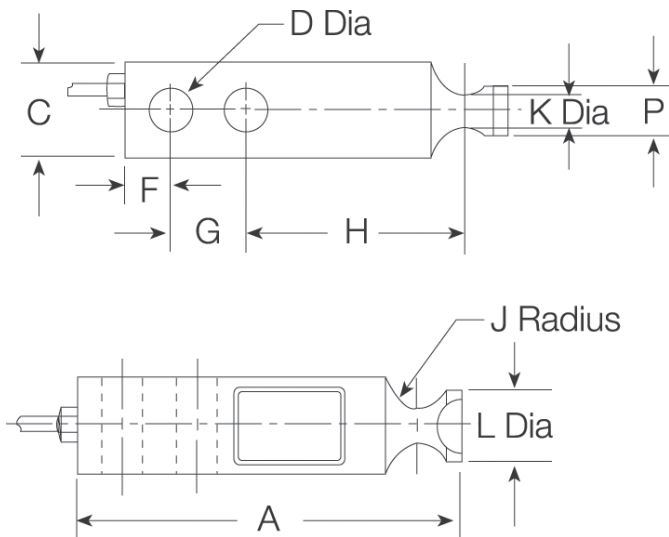


### Order Information

Load Rating	Part #	Est. Weight	Price
1,000 lb	31396	3 lb	Consult
1,500 lb	79713	3 lb	Consult
2,500 lb	31397	3 lb	Consult
4,000 lb	31398	3 lb	Consult
5,000 lb	31399	4 lb	Consult
7,500 lb	85306	4 lb	Consult
10,000 lb	31400	4 lb	Consult

### Dimensions

Rated Capacity	A	C	D	F	G	H	J	K	L	P
1,000 to 4,000	5.12	1.25	0.53	0.62	1.00	3.00	0.44	0.60	0.92	0.62
5,000 to 10,000	6.75	1.50	0.78	0.75	1.50	3.75	0.56	0.86	1.20	0.90



### Interchangeable Products

ARTECH®  
30410

### Specifications

- Full Scale Output:**  
3.0 mV/V
- Output Resistance:**  
350 (± 3.5) ohm
- Input Resistance:**  
350 (± 3.5) ohm
- Material/Finish:**  
High-alloy steel
- Temperature:**  
Compensated range  
14 °F to 104 °F (-10 °C to 40 °C)  
Operating range  
0 °F to 150 °F (-18 °C to 65 °C)
- Seal Type:**  
Environmentally sealed, IP67
- Safe Overload:**  
150% full scale
- Safe Sideload:**  
100% full scale
- Rated Excitation:**  
5 to 10 V
- Non-repeatability:**  
0.01% full scale
- Combined Error:**  
0.02% full scale
- Insulation Resistance:**  
5,000 megohm
- Deflection at Capacity:**  
1,000 lb: 0.016 in  
2,500 lb: 0.03 in  
4,000 lb: 0.04 in  
5,000 lb: 0.035 in  
10,000 lb: 0.042 in
- Cable Length:**  
20 ft
- Cable Color Code:**  
Red +Excitation  
Black -Excitation  
Green +Signal  
White -Signal
- Warranty:**  
One-year limited
- Approvals:**  
cFMus  
NTEP

VPG REVERE